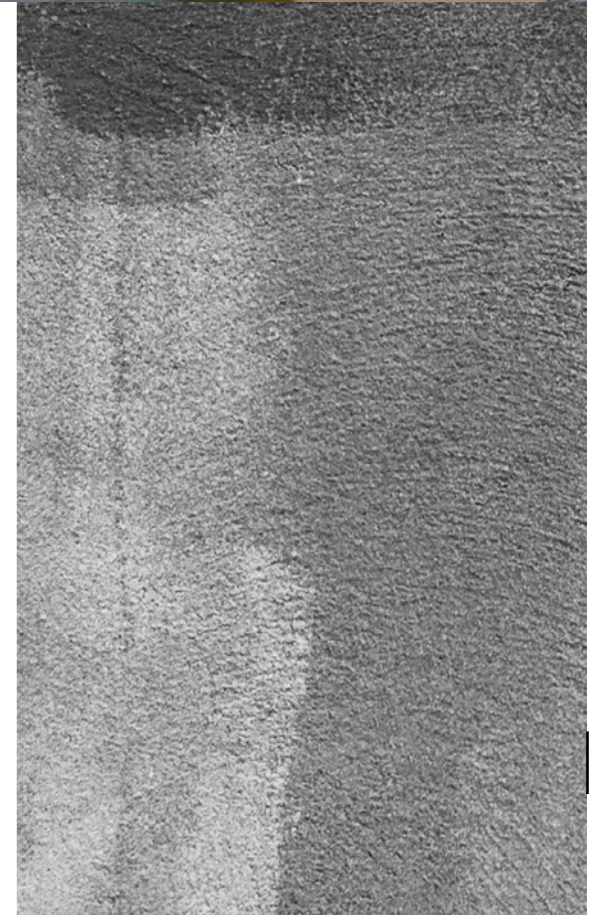
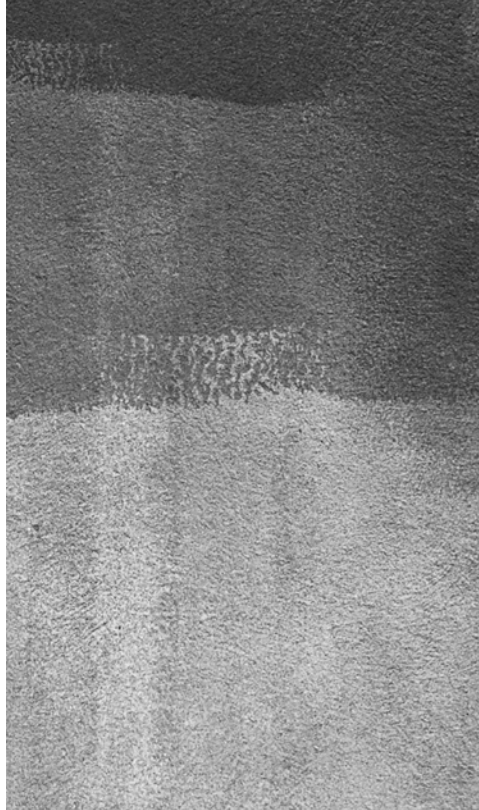




WORLD

EN
PRODUCT CATALOGUE NO. 35 2021



ANY QUESTIONS? WRITE TO US

247 Żmigrodzka Street,
51-129 Wrocław, Poland

Find us on Facebook:
[facebook.com/FMWorldOfficial](https://www.facebook.com/FMWorldOfficial)

Visit our online shop:
shop-global.fmworld.com

www.fmworld.com

CONTENTS

PURE ROYAL		4-51
PURE		52-85
BODY CARE		86-119
MAKEUP		120-155
AURILE		156-171
SMART & CLEAN		172-201
FRAGRANCES LIST		202-206



FEDERICO MAHORA

PURE
H O M E

Pure Royal

Welcome to the magical world of Pure Royal fragrances. On the following pages you will find all your favorite fragrances from this line. Immerse yourself in the world of your favorite perfumes and find a product that suits you. We are constantly changing for the better – for you....

FLORAL

SENSUAL
AND ROMANTIC

This is the most comprehensive family of fragrances. Floral compositions create fresh, ethereal and delicate bouquets. You can go ahead and experiment with scents and change them depending on the occasion. The romantic character of these perfumes was created to emphasise sensuality.

FOUGERE

SEDUCTIVE
AND CLASSIC

An exceptionally intriguing family of fragrances, dominated by forest, grass and herbal accords. Its name comes from French and means fern. Designed for those who appreciate the classics and value traditional beauty canons. Compositions, which represent professionalism and emphasise the style of a mature man.

CITRUS

JOYFUL
AND ENERGETIC

Juicy fruits form an extremely refreshing citrus group provide a refreshing sensation and an amazing boost of energy. They emphasise your temperament, sociable and cheerful nature, and put you in a good mood. Perfect for people who enjoy life to the fullest.

ORIENTAL

STRONG
AND UNTAMED

Fragrances associated with Far East countries, reminiscent of exotic trips, mysterious places and intriguing situations. These are compositions with warm and exotic tones. Both sweet and smoky notes appear in them. They are perfect for autumn and winter days and special occasions.

CHYPRE

SENSUAL
AND TEMPTING

This family is dominated by bold, strong and chic compositions. They evoke the smell of silk scarves and elegant gloves. Woody and herbal-earth notes pulsating in perfumes give them a clear and fresh aroma that attracts attention and adds confidence. Suitable for people with a strong character; intriguing and sensual.

WOODY

SOPHISTICATED
AND CLASSY

Warm and deep notes combined with refined accords create an elegant and sophisticated group of fragrances. Many of them were used to create perfume in ancient times. They stand out with a resin, forest aroma. These moody, mysterious and noble compositions add faith to your abilities.



PURE ROYAL 501

Perfume

FLORAL

sensual and romantic

WITH A FOUGERE NOTE

Type:

- sophisticated, addictive

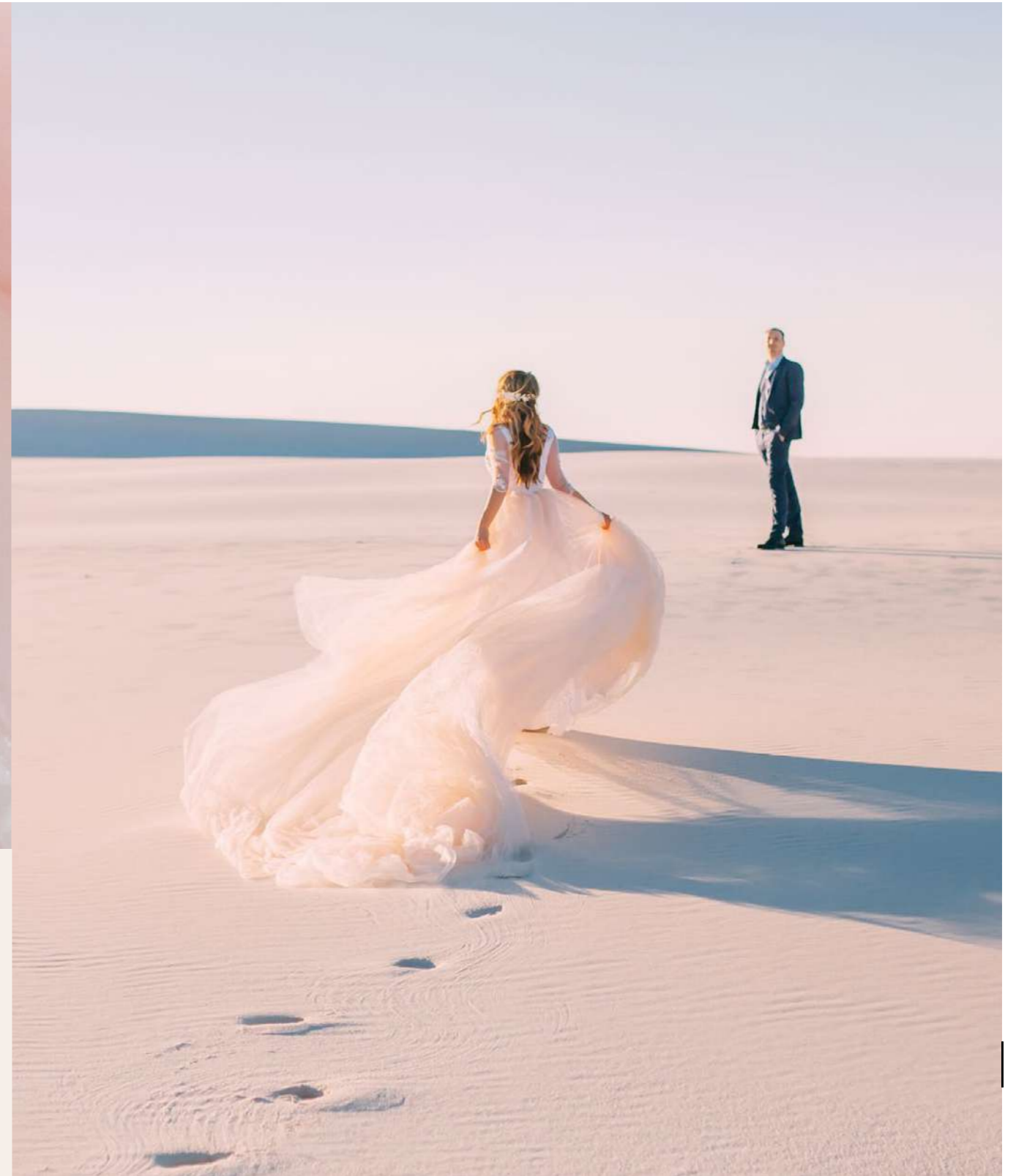
Fragrance notes:

- Head: raspberry, grapefruit, plum, blackcurrant, davane, pink pepper
- Heart: cypress, hawthorn, rose, lily of the valley, tagetes, chamomile, geranium
- Base: anilla, cedar, benzoin, orcanox, chocolate, patchouli, civet, amber, cypriol, gourmand, musks, santamanol*, labdanum

50 ml | Fragrance: 20%
170501 |



An original combination of fragrances that will delight even the most demanding connoisseur. We owe a tribute to the classic accords to the noblest variety of Bulagarian rose, which, combined with the charming May lily of the valley and unique hawthorn flowers, gives an extremely sensitive character to the heart of the fragrance.





PURE ROYAL 500

Perfume

WOODY

sophisticated and classy

WITH A CITRUS NOTE

Type:

- monumental, but bright

Fragrance notes:

- Head: angelica, saffron, lime, galbanum, lime peel, mandarin
- Heart: jasmine, heliotropium, myrrh, carrot, iris
- Base: sandalwood, vanilla, labdanum, oakmoss, leather, Haitian vetiver, musk

50 ml | Fragrance: 20%
170500 |



RICH STRUCTURE

The rich structure of PURE ROYAL 500 perfume, seemingly heterogenous and contrasting, creates a surprisingly coherent history. It starts with the fresh and bright tones of citrus notes and galbanum, accompanied by distinctive angelica and saffron. Next comes the heart of this fragrance – a flower bouquet with a hint of myrrh. At the end, it takes on its final character, showing its true majesty owed to organic-wood accords.

The Golden Edition fragrances have more refined and sophisticated ingredients than their partner Pure Royal perfumes and have more Personal Points.



PURE ROYAL

Perfume

50 ml | Fragrance: 20%

NEW

CHYPRE

sensual and tempting

WITH A FLORAL NOTE

PURE ROYAL 978
170978 |

Type:
addictive, exuberant

Fragrance notes:
Head: lily of the valley, white freesia
Heart: rose, maté leaf
Base: sandalwood, leather, musks

WITH A CITRUS NOTE

PURE ROYAL 987
170987 |

Type:
pure, refreshing, seductive

Fragrance notes:
Head: bergamot, pink grapefruit, lemon, yellow mandarin, cucumber, galbanum, green leaves
Heart: jasmine, freesia, rose, lily of the valley, ozonic, hedione, salicylates (solar), orange blossom
Base: sandalwood, white musks, orcanox, lorenax*, Java vetiver, santamanol*

ORIENTAL

strong and untamed

WITH A FLORAL NOTE

PURE ROYAL 980
170980 |

Type:
brave, alluring

Fragrance notes:
Head: bergamot, ylang-ylang, green
Heart: jasmine, tuberose, salicylates (solar)
Base: vanilla, benzoin, gold amber

WITH A WOODY NOTE

PURE ROYAL 986
170986 |

Type:
refined, unique

Fragrance notes:
Head: black pepper, coconut, pink pepper
Heart: iris, osmanthus, incense, olibanum
Base: sandalwood, vanilla, tonka bean, patchouli

PURE ROYAL 988
170988 |

Type:
marine, addictive

Fragrance notes:
Head: incense, pepper, fleur de sel
Heart: ylang-ylang, sambac jasmine, dry wood
Base: patchouli, vanilla, marine, moss

CITRUS

joyful and energetic

WITH A WOODY NOTE

PURE ROYAL 981
170981 |

Type:
full of life, vibrant

Fragrance notes:
Head: bergamot, lemon, petitgrain
Heart: neroli, juniper, white flower
Base: orange tree, white woods, musks

WITH A HINT OF SEA SALT

PURE ROYAL 982
170982 |

Type:
fresh as a sea breeze, sensual

Fragrance notes:
Head: mandarin, bergamot, ylang-ylang, lemon, petitgrain,
Heart: jasmine, lily of the valley, orange blossom
Base: benzoin, moss, cedarwood, musks

WITH A CHYPRE NOTE

PURE ROYAL 989
170989 |

Type:
addictive, seductive

Fragrance notes:
Head: citrus, fresh, fruity
Heart: floral, woody
Base: soft amber, musky

FLORAL

sensual and romantic

WITH A FRUITY NOTE

PURE ROYAL 983
170983 |

Type:
joyful, appetizing

Fragrance notes:
Head: mandarin, pink berries, blackcurrant, exotic fruits,
Heart: violet, freesia, rose, lily of the valley mimosa
Base: peach, amber, musks, modern dry wood

PURE ROYAL 984
170984 |

Type:
tasty, charming, joyful

Fragrance notes:
Head: bergamot, pear, crushed leaves
Heart: pear blossom, transparent jasmin
Base: ambergris, precious musks

PURE ROYAL 985
170985 |

Type:
sophisticated, sensual

Fragrance notes:
Head: bergamot, pink pomelo, cranberry
Heart: honeysuckle, gardenia, jasmine
Base: blonde woods, musk

FLORAL

sensual and romantic

WITH A CHYPRE NOTE

PURE ROYAL 908
170908 |

Type:
elegant, fresh as a garden in the morning

Fragrance notes:
Head: bergamot, coriander, plum
Heart: jasmine, rose, peony, suede
Base: patchouli, ambrette seeds, moss, amber

PURE ROYAL 970
170970 |

Type:
silky, classic

Fragrance notes:
Head: ylang-ylang, green notes, rose, fruity notes
Heart: heliotrope, peach blossom, light wood
Base: violet, woody and amber notes, musk

PURE ROYAL 971
170971 |

Type:
sophisticated, sensual

Fragrance notes:
Head: pepper, coriander, rhubarb
Heart: gardenia, tuberose, jasmine, clove, lily of the valley
Base: ambergris, vetiver, leather

PURE ROYAL 976
170976 |

Type:
fresh, expressive

Fragrance notes:
Head: apricot, mandarin, orange
Heart: jasmine, neroli, orange blossom
Base: musk, patchouli, vanilla

WITH AN ORIENTAL NOTE

PURE ROYAL 909
170909 |

Type:
fresh, with an edgy element

Fragrance notes:
Head: bergamot, mandarin, honey, rum
Heart: orchid, magnolia, jasmine, rose, orange blossom, heliotrope
Base: sandalwood, citrus, myrrh, Peru balsam, leather, vanilla

PURE ROYAL 915
170915 |

Type:
juicy, sweet, airy

Fragrance notes:
Head: hyacinth, clove
Heart: lily of the valley, jasmine, wild rose
Base: white amber, musk

PURE ROYAL 922
170922 |

Type:
unobvious, deep

Fragrance notes:
Head: orange flower, leafy notes, clove
Heart: ylang-ylang, jasmine, rose
Base: cedar wood, musk, amber

PURE ROYAL 979
170979 |

Type:
sensual, bold

Fragrance notes:
Head: almond
Heart: tuberose, rose, ambrette seed
Base: vanilla, iris, musk

WITH A WOODY NOTE

PURE ROYAL 918
170918 |

Type:
bright, fresh

Fragrance notes:
Head: rhubarb, peach leaf
Heart: violet, rose
Base: light wood, musk

WITH A CITRUS NOTE

PURE ROYAL 921
170921 |

Type:
dazzling, energising

Fragrance notes:
Head: mandarin, calamondin, orange
Heart: hibiscus, lotus flower, orange flower, jasmine
Base: vanilla, cistus, cedar wood, honey

WITH A FRUITY NOTE

PURE ROYAL 929
170929 |

Type:
warm, joyous, tempting

Fragrance notes:
Head: peony, apple, fruity notes, citrus notes
Heart: Damascus Rose, dianthus, jasmine
Base: white musk, amber, moss, leather

WITH A GOURMAND NOTE

PURE ROYAL 934
170934 |

Type:
delicate, addictive

Fragrance notes:
Head: honey, orange, cherry
Heart: jasmine, rose, orange tree, lily of the valley, clove
Base: sandalwood, cypress, coconut, caramel, cedarwood, peach skin, musk

PURE ROYAL 975
170975 |

Type:
flirtatious, delicious

Fragrance notes:
Head: bergamot, orange, grape
Heart: jasmine, freesia, cardamom, magnolia, saffron, pink pepper, rose essence
Base: patchouli, tonka bean, oak moss, cedarwood, peach skin, amber, musk, sugar



PURE ROYAL Perfume

50 ml | Fragrance: 20%

CITRUS

joyful and energetic

WITH A CHYPRE NOTE

PURE ROYAL 902
170902 |

Type:
fresh, bright, energising

Fragrance notes:
Head: mandarin, bergamot, lemon
Heart: petitgrain, orange blossom, pepper
Base: cedarwood, musk, moss

WITH A FRUITY NOTE

PURE ROYAL 903
170903 |

Type:
energising, positive

Fragrance notes:
Head: mandarin, bergamot, lemon, petitgrain, rosemary
Heart: neroli, orange blossom, jasmine
Base: cedarwood, musk, peach

WITH A LIME NOTE

PURE ROYAL 911
170911 |

Type:
positive, captivating with a hint of lime

Fragrance notes:
Head: grapefruit, bergamot, lime, basil, lemon
Heart: thyme, lilac, jasmine, iris
Base: vetiver, patchouli, cedarwood, labdanum, musk

WITH A FLORAL NOTE

PURE ROYAL 914
170914 |

Type:
refreshing, sparkling, sweet

Fragrance notes:
Head: bergamot, green notes, salty notes
Heart: sage, fruity notes, floral notes
Base: woody notes, amber, musk

WITH AN ORANGE NOTE

PURE ROYAL 917
170917 |

Type:
serious with a radiant accent

Fragrance notes:
Head: orange, mandarin, sage
Heart: jasmine, orange flower
Base: honey, sunny notes

ORIENTAL

strong and untamed

WITH A WOODY NOTE

PURE ROYAL 904
170904 |

Type:
rebellious, bold, brisk

Fragrance notes:
Head: cumin, cardamom, cyclamen
Heart: incense, iris, earthy notes
Base: musk, leather, sandalwood

PURE ROYAL 905
170905 |

Type:
balancing between the sacred and the profane

Fragrance notes:
Head: plum, raspberry, rhubarb, pomegranate, clove
Heart: pink pepper, jasmine, opoponax, patchouli, lily
Base: guaiac wood, cedarwood, amberwood, incense, vanilla

PURE ROYAL 974
170974 |

Type:
severe, uncompromising

Fragrance notes:
Head: mandarin
Heart: geranium, rose
Base: oud, leather, patchouli, musk

WITH A SPICY NOTE

PURE ROYAL 906
170906 |

Type:
passionate, sensual

Fragrance notes:
Head: bergamot, nectarine, ginger
Heart: jasmine, carnation, cinnamon leaves, rosemary, heliotrope
Base: vanilla, tonka bean, cedarwood, tobacco, patchouli

WITH A GOURMAND NOTE

PURE ROYAL 923
170923 |

Type:
charming, attractive, disarming

Fragrance notes:
Head: citrus notes, spicy notes, cinnamon, clove, ginger, cardamom, fruity notes
Heart: woody notes, floral notes
Base: amber, musk, powdery notes

PURE ROYAL 930
170930 |

Type:
appetising, sweet and savoury

Fragrance notes:
Head: oud, sweet notes, honey
Heart: Damask rose, clove
Base: moss, amber, patchouli

WITH A CHYPRE NOTE

PURE ROYAL 925
170925 |

Type:
business, modern

Fragrance notes:
Head: grapefruit, sage, neroli
Heart: nutmeg, lily, spicy notes
Base: oakmoss, amber, cedar wood, white musk

PURE ROYAL 926
170926 |

Type:
mature, defined

Fragrance notes:
Head: saffron, thyme, raspberry
Heart: jasmine, incense, cedar wood, vanilla
Base: woody notes, amber, leather, moss

WITH A FOUGERE NOTE

PURE ROYAL 927
170927 |

Type:
mature, uncompromising

Fragrance notes:
Head: pink berries, bergamot, verbena, cumin
Heart: pepper, iris, rose, nutmeg
Base: patchouli, vanilla, amber, animal notes

WITH A FLORAL NOTE

PURE ROYAL 913
170913 |

Type:
warm, sweet, inviting

Fragrance notes:
Head: pink pepper, bergamot, orange, pistachio
Heart: coconut, ylang-ylang, jasmine, tuberose
Base: benzoin resin, tonka bean, vanilla, amber

PURE ROYAL 920
170920 |

Type:
untamed, surprising

Fragrance notes:
Head: pink pepper, incense, rose
Heart: leather, red fruit, saffron
Base: peach, oud, amber

WITH A FRUITY NOTE

PURE ROYAL 972
170972 |

Type:
exotic, inviting

Fragrance notes:
Head: raspberry, passionfruit, pineapple, blackcurrant
Heart: peach blossom, lily of the valley, peony
Base: vanilla, drifting amber, cedarwood, patchouli, musk

CHYPRE

sensual and tempting

WITH A SPICY NOTE

PURE ROYAL 901
170901 |

Type:
classic, balanced, elegant

Fragrance notes:
Head: mandarin, wormwood, juniper
Heart: cardamom, ginger, lavender
Base: cedarwood, amber, patchouli

WITH A FLORAL NOTE

PURE ROYAL 912
170912 |

Type:
urban, modern, combative

Fragrance notes:
Head: bergamot, lemon, pepper, petitgrain
Heart: neroli, orange blossom, basil
Base: musk, vetiver

WITH A FRUITY NOTE

PURE ROYAL 916
170916 |

Type:
mysterious, intriguing

Fragrance notes:
Head: bergamot, basil, mint
Heart: freesia, pear, rose
Base: musk, patchouli, sandalwood



PURE ROYAL Perfume

50 ml | Fragrance: 20%

WOODY

sophisticated and classy

WITH A FRUITY NOTE

PURE ROYAL 900
170900 |

Type:
fascinating, unique, charming cherry scent

Fragrance notes:

Head: black cherry, cherry liqueur, bitter almonds
Heart: rose, jasmine, sour cherry
Base: tonka bean, sandalwood, vetiver, cedarwood

PURE ROYAL 977
170977 |

Type:
energetic, combative

Fragrance notes:

Head: apple, plum, pineapple, lime, lemon, bergamot, mandarin
Heart: rose, jasmine, lily of the valley, orchid, iris, gardenia
Base: tonka bean, sandalwood, cedarwood, patchouli, white musk, ambergris

WITH A CITRUS NOTE

PURE ROYAL 907
170907 |

Type:
fresh, elusive

Fragrance notes:

Head: yellow mandarin, lemon, pineapple, bergamot, wallflower, cardamom, pink pepper
Heart: jasmine, lily of the valley, black pepper, iris, ozonic notes
Base: dry wood, white musk, warm notes, powdery notes, vetiver, cedarwood

WITH A GOURMAND NOTE

PURE ROYAL 910
170910 |

Type:
dry, scented with a hint of sweetness

Fragrance notes:

Head: jasmine, saffron
Heart: balsam fir, cedarwood
Base: cashmere wood, ambergris, moss, brown sugar

WITH A FLORAL NOTE

PURE ROYAL 924
170924 |

Type:
casual, transparent, friendly

Fragrance notes:

Head: mandarin, neroli, saffron, cardamom, nutmeg
Heart: Damascus Rose, jasmine, orange flower, floral notes, cedar wood
Base: amber, sweet wood, sandalwood, vanilla, milk

WITH A FOUGERE NOTE

PURE ROYAL 931
170931 |

Type:
primal, untamed

Fragrance notes:

Head: pink berries, white forest, rose
Heart: iris, saffron, leather, amber wood
Base: vanilla, white moss, dry wood, musk

WITH AN ORIENTAL NOTE

PURE ROYAL 932
170932 |

Type:
relaxing, charming

Fragrance notes:

Head: vanilla, coumarin, amber wood, musk
Heart: mugwort, mint, light wood
Base: cardamom, lavender, fresh flowers

FOUGERE

seductive and classic

WITH A LAVENDER NOTE

PURE ROYAL 919
170919 |

Type:
dignified, expressive, bright

Fragrance notes:

Head: lime, basil, lemon
Heart: jasmine, lavender, white tea
Base: oakmoss, vetiver, musk, ambergris

PURE ROYAL 933
170933 |

Type:
surprising, extravagant

Fragrance notes:

Head: coriander, grapefruit, lemon, absinthe, juniper berry
Heart: cashmeran, lavender, jasmine, sage
Base: sandalwood, moss, dry wood, musk, Virginian juniper



PURE ROYAL

Perfume

50 ml | Fragrance: 20%

FOUGERE

seductive and classic

WITH A CHYPRE NOTE

PURE ROYAL 973
170973 |

Type:
herbal, defined

Fragrance notes:

Head: caramel, tobacco, red berries, orange
Heart: tuberose, lily, orchid
Base: vanilla, patchouli

WITH A GREEN NOTE

PURE ROYAL 928
170928 |

Type:
astounding with the scent of blackberry bush

Fragrance notes:

Head: blackberry, blackcurrant, peach, lemon, green notes
Heart: cyclamen, white flowers, sweet notes
Base: sandalwood, amber, moss

PURE ROYAL 313

Perfume

WOODY

sophisticated and classy

WITH A FLORAL NOTE

Type:

- chic, compelling

Fragrance notes:

- Head: lemon, raspberry
- Heart: orange blossom, jasmine
- Base: patchouli, white honey

50 ml | Fragrance: 20%

130313.02 |



SPECIAL EDITION

The iconic fragrance with an elegant appearance is the perfect gift idea for that special person. The classic look of the perfume bottle with a vintage pump is a real treat for perfume connoisseurs. Rediscover the captivating combination of lemon, sweet raspberry and honey with the intoxicating scent of orange blossom, jasmine, and patchouli.

These are perfumes from the Pure Royal line, which have a special, exceptionally elegant packaging for even greater satisfaction for you and your loved ones.

FLORAL

sensual and romantic

WITH A FRUITY NOTE

PURE ROYAL 841
170841 |

Type:

balanced, clearly rose

Fragrance notes:

Head: bergamot, lychee, pear leaves
Heart: rose, magnolia, violet
Base: plum, musk

PURE ROYAL 845
170845 |

Type:

light, dazzling

Fragrance notes:

Head: peach, bergamot, rhubarb, elemi resin, pear, pineapple, Osmanthus, blackcurrant, lemon, fig, sweet orange
Heart: violet, ylang-ylang, iris, magnolia, rose, lily of the valley, ozonic notes, jasmine, sage, black tea, orange blossom, geranium, American mint
Base: sandalwood, white musk, cedarwood, benzoin resin, vetiver, cashmeran, patchouli, cypriol, gourmand notes

PURE ROYAL 847
170847 |

Type:

friendly, serene

Fragrance notes:

Head: mandarin, ylang-ylang, pear, red fruits
Heart: jasmine sambac, apricot, cedarwood, orange blossom
Base: vanilla, tuberose, amber, musk

WITH A GOURMAND NOTE

PURE ROYAL 842
170842 |

Type:

appetising, warm

Fragrance notes:

Head: peach, bergamot, rhubarb, ginger, pear, pineapple, blackcurrant, coconut, apple, mandarin
Heart: jasmine, freesia, rose, lily of the valley, gardenia, green notes, orange blossom
Base: vanilla, cedarwood, tonka bean, ambergris, sandalwood, musk

PURE ROYAL 846
170846 |

Type:

charming but edgy

Fragrance notes:

Head: mandarin, pear, red fruits
Heart: jasmine, orange blossom, white pepper
Base: caramel, milky notes, amber, musk

WITH A CHYPRE NOTE

PURE ROYAL 848
170848 |

Type:

stylish, modern

Fragrance notes:

Head: mandarin, bergamot, pear
Heart: jasmine, rose, geranium
Base: patchouli, sandalwood, musk

WOODY

sophisticated and classy

WITH A CITRUS NOTE

PURE ROYAL 843
170843 |

Type:

bright, elegant

Fragrance notes:

Head: mandarin, lemon, lavender
Heart: jasmine, pear, orange blossom
Base: vanilla, woody notes, amber, musk

CITRUS

joyful and energetic

WITH A FLORAL NOTE

PURE ROYAL 844
170844 |

Type:

fresh, serene

Fragrance notes:

Head: mandarin, marine notes, lemon, green apple, tropical fruits
Heart: jasmine, violet, ylang-ylang, lily of the valley, blackcurrant, hyacinth, geranium
Base: patchouli, benzoin resin, coconut, peach skin, musk

PURE ROYAL Perfume
50 ml | Fragrance: 20%

FLORAL

sensual and romantic

WITH A FRUITY NOTE

PURE ROYAL 281
170281 |

Type:
vibrant, hot

Fragrance notes:
Head: blackcurrant
Heart: jasmine, rose
Base: musk, strawberry

PURE ROYAL 322
170322 |

Type:
serene, sensual

Fragrance notes:
Head: quince, grapefruit
Heart: jasmine, hyacinth
Base: white musk, cedarwood

PURE ROYAL 708
170708 |

Type:
harmonious, juicy

Fragrance notes:
Head: bergamot, lychee, peach
Heart: jasmine, peony, orange blossom
Base: woody notes, moss, musk

PURE ROYAL 711
170711 |

Type:
mature, balanced, friendly

Fragrance notes:
Head: apple, mandarin, clove, orange
Heart: rose, jasmine, orange blossom
Base: patchouli, vanilla, musk, sandalwood

PURE ROYAL 800
170800 |

Type:
feminine, joyful, sunny, full of positive energy

Fragrance notes:
Head: mandarin, grapefruit, blackcurrant
Heart: jasmine, tuberose, ylang-ylang
Base: rose, sandalwood, musk

PURE ROYAL 806
170806 |

Type:
bold, joyful, positive

Fragrance notes:
Head: mandarin, jasmine, water notes
Heart: rose, tuberose, ylang-ylang
Base: musk, sandalwood, cedarwood

PURE ROYAL 807
170807 |

Type:
romantic, light, fresh

Fragrance notes:
Head: bergamot, neroli, petitgrain
Heart: wild peach, lily of the valley, jasmine
Base: cedarwood, musk

PURE ROYAL 817
170817 |

Type:
joyful, subtle, full of brilliance

Fragrance notes:
Head: raspberry, lemon
Heart: rose, neroli
Base: musk, vanilla, patchouli

PURE ROYAL 818
170818 |

Type:
joyful, fresh, tempting

Fragrance notes:
Head: red berries, mandarin, lemon, pear
Heart: gardenia, jasmine, lily of the valley, neroli
Base: vanilla, patchouli, musk, benzoin resin

PURE ROYAL 827
170827 |

Type:
joyful, full of energy, sunny

Fragrance notes:
Head: peach, lemon, apple blossom, juicy pear, violet leaves
Heart: jasmine, freesia, hibiscus, green leaves
Base: musk, cedarwood, sandalwood

PURE ROYAL 833
170833 |

Type:
powdery, magnificent, feminine

Fragrance notes:
Head: peach, orange, honeysuckle
Heart: tuberose, jasmine, iris
Base: sandalwood, cedarwood, vanilla, musk

PURE ROYAL 835
170835 |

Type:
sweet, but edgy, feisty

Fragrance notes:
Head: apple, pear, bergamot, lemon, peach
Heart: lily of the valley, jasmine, rose, iris
Base: cedarwood, patchouli, vanilla, ambergris, musk

PURE ROYAL 836
170836 |

Type:
clear, pleasant, optimistic

Fragrance notes:
Head: pear, apple, bergamot, lily of the valley, raspberry
Heart: peony, rose, magnolia, freesia
Base: sandalwood, musk, patchouli, amber

WITH AN ALDEHYDE NOTE

PURE ROYAL 826
170826 |

Type:
classic, fresh

Fragrance notes:
Head: aldehyde, bergamot, violet
Heart: lily of the valley, jasmine, ylang-ylang
Base: clover, iris, musk

WITH AN ORIENTAL NOTE

PURE ROYAL 146
170146 |

Type:
imbued with sweetness, mysterious

Fragrance notes:
Head: freesia, apple, Jamaican pepper
Heart: violet, hibiscus, rose, lilac
Base: labdanum, sandalwood, cedarwood, suede

PURE ROYAL 147
170147 |

Type:
tasteful, alluring

Fragrance notes:
Head: lychee, mandarin, peach
Heart: plum, lily of the valley, lily
Base: vanilla, ambergris, musk, suede

PURE ROYAL 317
170317 |

Type:
seductive, sensual

Fragrance notes:
Head: red berries, pink pepper
Heart: raspberry, peach, violet, lilac
Base: patchouli, ambergris

PURE ROYAL 352
170352 |

Type:
velvety, thrilling

Fragrance notes:
Head: orange blossom
Heart: jasmine
Base: patchouli, honey

PURE ROYAL 355
170355 |

Type:
sensual, seductive

Fragrance notes:
Head: citrus notes
Heart: jasmine tea, lily
Base: sandalwood, cedarwood, vanilla



PURE ROYAL Perfume

50 ml | Fragrance: 20%



Perfume
PURE ROYAL

50 ml | Fragrance: 20%

FLORAL

sensual and romantic

WITH A WATER NOTE

PURE ROYAL 141
 170141 |

Type:
 crystal clear, romantic

Fragrance notes:
 Head: yuzu, pomegranate, ice chord
 Heart: lotus, magnolia, peony
 Base: ambergris, musk, mahogany

PURE ROYAL 707
 170707 |

Type:
 full of energy, evoking the memory of summer

Fragrance notes:
 Head: bergamot, lemon, orange, mandarin, leafy notes
 Heart: lily of the valley, jasmine, water notes
 Base: patchouli, peach, ambergris

WITH A CITRUS NOTE

PURE ROYAL 298
 170298 |

Type:
 full of energy, fresh

Fragrance notes:
 Head: citrus fruits, peony
 Heart: rose, Osmanthus
 Base: patchouli, sandalwood

PURE ROYAL 810
 170810 |

Type:
 subtle, delicate, feminine, serene

Fragrance notes:
 Head: bergamot, mandarin, blackcurrant
 Heart: pink peony, rose, lily of the valley, peach, apricot
 Base: musk, amber, patchouli, oakmoss

WITH A WOODY NOTE

PURE ROYAL 365
 170365 |

Type:
 classic with a note of Baroque splendour

Fragrance notes:
 Head: grapefruit, bergamot
 Heart: rose, daffodil, jasmine, geranium, patchouli
 Base: sandalwood, vanilla, white musk, tonka bean

PURE ROYAL 710
 170710 |

Type:
 tempting, nonconformist

Fragrance notes:
 Head: jasmine, osmanthus, rose
 Heart: tuberose, narcissus
 Base: amber, cedarwood

PURE ROYAL 713
 170713 |

Type:
 rosy, defined, elegant

Fragrance notes:
 Head: saffron
 Heart: rose, jasmine, peony
 Base: woody notes, musk, ambergris

PURE ROYAL 715
 170715 |

Type:
 diversified, elegant, classic

Fragrance notes:
 Head: yellow mandarin, green pear, pink pepper, blackcurrent, peach, apple
 Heart: jasmine sambac, orange tree, lily of the valley, rose, marigold
 Base: patchouli, white musk, cedarwood, dry wood, vanilla, cashmere

PURE ROYAL 777
 170777 |

Type:
 elegant, toned, vintage

Fragrance notes:
 Head: bergamot, peach, plum, blackcurrant, lily, pear
 Heart: mimosa, rose, jasmine, heliotrope, lily of the valley, coconut
 Base: vanilla, sandalwood, tonka bean, musk, caramel

CITRUS

joyful and energetic

WITH A MANDARIN NOTE

PURE ROYAL 801
 170801 |

Type:
 fresh, romantic, sensual, full of charm

Fragrance notes:
 Head: citrus cocktail, pink berries, pear, green notes
 Heart: rose, magnolia, night blooming jasmine
 Base: patchouli, vanilla, tonka bean, sandalwood

WITH A LEMON NOTE

PURE ROYAL 712
 170712 |

Type:
 energetic, bright, southern

Fragrance notes:
 Head: bergamot, lemon, red berries, clementine, apple blossom
 Heart: cardamom, jasmine
 Base: sandalwood, cedarwood, musk

PURE ROYAL 828
 170828 |

Type:
 delightful, full of sweetness

Fragrance notes:
 Head: lemon, raspberry, almond, blackcurrant
 Heart: rose, orange blossom, jasmine
 Base: vanilla, patchouli, ambergris, musk

WITH A FLORAL NOTE

PURE ROYAL 709
 170709 |

Type:
 refreshing, transparent, independent

Fragrance notes:
 Head: bergamot, lemon, neroli, marigold
 Heart: violet, jasmine, cyclamen
 Base: black amber, musk, vetiver, cedarwood

PURE ROYAL 714
 170714 |

Type:
 fresh, serene, transparent

Fragrance notes:
 Head: bergamot, lime, apple blossom, juicy pear
 Heart: jasmine, rose, black pepper
 Base: musk, sandalwood, heliotrope

ORIENTAL

strong and untamed

WITH A FLORAL NOTE

PURE ROYAL 171
 170171 |

Type:
 expressive, intense, captivating

Fragrance notes:
 Head: pineapple, nectarine, juicy pear
 Heart: pink peony, freesia, frangipani
 Base: musk, sandalwood, patchouli, tonka bean, vanilla

PURE ROYAL 809
 170809 |

Type:
 sophisticated and tasteful

Fragrance notes:
 Head: bergamot, ginger, water notes
 Heart: incense, rose, patchouli
 Base: musk, vanilla, vetiver

PURE ROYAL 820
 170820 |

Type:
 sensual, provocative, magnetic

Fragrance notes:
 Head: orange blossom, peach
 Heart: ylang-ylang, rose
 Base: sandalwood, ambergris, vanilla, musk

PURE ROYAL 834
 170834 |

Type:
 warm, creamy, enveloping

Fragrance notes:
 Head: bergamot, lily of the valley
 Heart: rose, coconut, lily
 Base: benzoin resin, amber, wood, vanilla, sandalwood

WITH A FRUITY NOTE

PURE ROYAL 286
 170286 |

Type:
 sexy, sophisticated

Fragrance notes:
 Head: bergamot
 Heart: rose, patchouli
 Base: ambergris, orange

ORIENTAL

strong and untamed

WITH A WOODY NOTE

PURE ROYAL 142
170142 |

Type:
provocative, addictive

Fragrance notes:
Head: blackberry, mandarin leaves
Heart: rose, tuberose, orange blossom
Base: sandalwood, tonka bean, vanilla

PURE ROYAL 162
170162 |

Type:
classical, slightly sweet

Fragrance notes:
Head: floral honey
Heart: rose, vanilla
Base: musk, patchouli

PURE ROYAL 359
170359 |

Type:
magnetic, intense

Fragrance notes:
Head: jasmine, heliotrope
Heart: iris root, cashmere wood
Base: ambergris, vanilla

WITH A SPICY NOTE

PURE ROYAL 366
170366 |

Type:
rebellious, urban, sexy, edgy

Fragrance notes:
Head: pink pepper, orange blossom, pear
Heart: coffee, jasmine
Base: vanilla, patchouli, cedarwood

WOODY

sophisticated and classy

WITH A FRUITY NOTE

PURE ROYAL 358
170358 |

Type:
ultra-feminine, delightful

Fragrance notes:
Head: bergamot, blackcurrant
Heart: jasmine, lily of the valley
Base: cedarwood, sandalwood, tonka bean, vanilla

WITH A FLORAL NOTE

PURE ROYAL 825
170825 |

Type:
elegant, not obvious

Fragrance notes:
Head: bergamot, lavender, wormwood
Heart: balsam fir, jasmine, cedarwood
Base: oakmoss, musk, vanilla

CHYPRE

sensual and tempting

WITH A FRUITY NOTE

PURE ROYAL 362
170362 |

Type:
overwhelming, seductive

Fragrance notes:
Head: blackcurrant leaf
Heart: rose, freesia
Base: patchouli, vanilla, ambroxan, woody notes

PURE ROYAL 804
170804 |

Type:
bold, modern, full of charm

Fragrance notes:
Head: mandarin, blackcurrant, bamboo leaves
Heart: rose, peony, orange blossom
Base: patchouli, praline, musk

PURE ROYAL 811
170811 |

Type:
fresh, frivolous, comfortable

Fragrance notes:
Head: bergamot, pear, raspberry
Heart: jasmine, orange blossom, rose
Base: amber, patchouli, musk

PURE ROYAL 829
170829 |

Type:
stylish, adds self-confidence

Fragrance notes:
Head: mandarin, lemon, nectarine
Heart: pepper, freesia, peony
Base: caramel, musk, vanilla, sandalwood

WITH A FLORAL NOTE

PURE ROYAL 802
170802 |

Type:
provocative, sensual, extraordinary

Fragrance notes:
Head: grapefruit, pink peppercorn, sea water chord
Heart: geranium, jasmine, rose
Base: patchouli, musk, vanilla

PURE ROYAL 803
170803 |

Type:
sensual, seductive, scandalous

Fragrance notes:
Head: orange, honey, wild peach

Heart: gardenia, orange blossom, iris
Base: patchouli, vanilla, amber

PURE ROYAL 819
170819 |

Type:
sophisticated, modern, elegant

Fragrance notes:
Head: red pepper, bergamot, plum blossom
Heart: Turkish rose, wild jasmine, patchouli
Base: leather, ambergris, oakmoss, sandalwood, tonka bean, vanilla



PURE ROYAL

Perfume

50 ml | Fragrance: 20%

CHYPRE

sensual and tempting

WITH A FRUITY NOTE

PURE ROYAL 169
170169 |

Type:
relaxing, spicy

Fragrance notes:
Head: Sicilian mandarin
Heart: rosemary, rosewood, Sichuan pepper
Base: incense, oakmoss

ORIENTAL

strong and untamed

WITH A FRUITY NOTE

PURE ROYAL 813
170813 |

Type:
touching, timeless

Fragrance notes:
Head: jasmine, lemon, mint, bergamot
Heart: wormwood, lavender, coffee
Base: musk, sandalwood, tonka bean, patchouli, vanilla, amber, moss

PURE ROYAL 830
170830 |

Type:
strong, for self-confident men

Fragrance notes:
Head: green apple, mandarin
Heart: orange blossom, lavender, carrot seeds, rum accord, nutmeg
Base: leather, vanilla, tonka bean, cedarwood

WITH A SPICY NOTE

PURE ROYAL 199
170199 |

Type:
rich, multi-dimensional

Fragrance notes:
Head: Italian mandarin, peppermint
Heart: cinnamon, Turkish rose, cardamom
Base: leather notes

PURE ROYAL 815
170815 |

Type:
bold, voluptuous, magnetic, vibrant

Fragrance notes:
Head: ginger, thyme, bergamot, grapefruit, resin, lemon
Heart: liqueur, apple, cinnamon, pepper, vanilla, lavender, geranium
Base: sugar, vetiver, myrrh, olibanum, amber, musk, oakmoss, leather

PURE ROYAL 832
170832 |

Type:
uncompromising, blunt

Fragrance notes:
Head: black pepper, lavender
Heart: iris, clove, cinnamon
Base: black vanilla, patchouli

WITH A WOODY NOTE

PURE ROYAL 301
170301 |

Type:
energetic, powerful

Fragrance notes:
Head: mandarin, lemon
Heart: cedarwood, coriander
Base: ambergris, labdanum

PURE ROYAL 326
170326 |

Type:
seductive, sensual

Fragrance notes:
Head: birch leaves
Heart: cardamom, African violet
Base: woody notes, musk

PURE ROYAL 335
170335 |

Type:
distinct, modern

Fragrance notes:
Head: rosewood, cardamom, pepper
Heart: vetiver, oud
Base: vanilla, ambergris

PURE ROYAL 812
170812 |

Type:
powerful, modern, sophisticated

Fragrance notes:
Head: bergamot, black pepper, nutmeg
Heart: monoi oil, thyme, lavender
Base: cedarwood, patchouli, musk

PURE ROYAL 821
170821 |

Type:
energising, charismatic, seductive

Fragrance notes:
Head: grapefruit, plum, driftwood
Heart: hazelnut, cedarwood, white honey
Base: patchouli, moss, dry wood

PURE ROYAL 822
170822 |

Type:
bold, multi-dimensional, addictive

Fragrance notes:
Head: mandarin, incense, pepper
Heart: water notes, lavender, plum
Base: cedarwood, sandalwood, vetiver, amber

PURE ROYAL 837
170837 |

Type:
cheeky, extraordinary, surprising

Fragrance notes:
Head: bergamot, black pepper, white pepper
Heart: cedarwood, sage
Base: tonka bean, amberwood, cocoa

WITH AN AMBERGRIS NOTE

PURE ROYAL 823
170823 |

Type:
decadent, luxurious, controversial

Fragrance notes:
Head: wild lavender, clary sage
Heart: vanilla blossom, iris, almond
Base: cashmere musk, tonka bean, leather, ambergris

WITH A GOURMAND NOTE

PURE ROYAL 839
170839 |

Type:
sensual, powerful, full of love

Fragrance notes:
Head: cardamom, pink pepper, mint, sage
Heart: violet, leaves, orange blossom, lavender, pineapple
Base: vanilla, cedarwood, amber, guaiac wood



PURE ROYAL

Perfume

50 ml | Fragrance: 20%



PURE ROYAL

Perfume

50 ml | Fragrance: 20%

WOODY

sophisticated and classy

WITH A FRUITY NOTE

PURE ROYAL 195
170195 |

Type:
noble, classic

Fragrance notes:
Head: coriander, basil
Heart: cardamom
Base: cedarwood, ambergris, tobacco

PURE ROYAL 824
170824 |

Type:
fresh, free, transparent

Fragrance notes:
Head: lime zest, green mandarin
Heart: grapefruit blossom, candied ginger, yellow mandarin
Base: vetiver, white musk, amberwood

WITH A PATCHOULI NOTE

PURE ROYAL 160
170160 |

Type:
mild, surprising

Fragrance notes:
Head: tomato leaves, water flowers, blackcurrant
Heart: black pepper, rose
Base: patchouli

PURE ROYAL 198
170198 |

Type:
flamboyant, expressive

Fragrance notes:
Head: bergamot
Heart: black pepper, tobacco
Base: patchouli, cypress

PURE ROYAL 327
170327 |

Type:
untamed, powerful

Fragrance notes:
Head: grapefruit, pink pepper
Heart: nutmeg, ginger, jasmine
Base: vetiver, patchouli, labdanum

PURE ROYAL 334
170334 |

Type:
refreshing, with a hint of spice

Fragrance notes:
Head: grapefruit, orange
Heart: geranium leaves, black pepper, pink pepper
Base: cedarwood, vetiver, patchouli

WITH A VETIVER NOTE

PURE ROYAL 151
170151 |

Type:
sophisticated, impressive

Fragrance notes:
Head: lemon, bergamot, ginger
Heart: cedarwood, amber
Base: geranium, musk

PURE ROYAL 152
170152 |

Type:
elegant, harmonious

Fragrance notes:
Head: bergamot
Heart: pepper, incense, leather, tobacco
Base: cedarwood

WITH A CHYPRE NOTE

PURE ROYAL 838
170838 |

Type:
imperious, expressive, relentless

Fragrance notes:
Head: bergamot, neroli
Heart: orange blossom, cedarwood
Base: leather, white musk, amber, ambergris, woody notes

FOUGERE

seductive and classic

WITH A FERN NOTE

PURE ROYAL 332
170332 |

Type:
light, full of energy

Fragrance notes:
Head: green apple, mint, mandarin
Heart: ginger, sage, fern
Base: oakmoss, musk, sandalwood

WITH A LAVENDER NOTE

PURE ROYAL 300
170300 |

Type:
light, dynamic

Fragrance notes:
Head: bergamot, lemon, grapefruit
Heart: ginger, lavender
Base: Atlas cedarwood

PURE ROYAL 814
170814 |

Type:
intense, magnetic, dynamic

Fragrance notes:
Head: ginger, cardamom, anise, apple
Heart: cinnamon, lavender, absinthe, plum, violet
Base: cedarwood, dry wood, amber, vanilla, tonka bean, musk

PURE ROYAL 831
170831 |

Type:
transparent, fresh, mild

Fragrance notes:
Head: bergamot, mandarin, green notes
Heart: lavender, rhubarb, apple blossom
Base: sandalwood, oakmoss, cedarwood, musk

PURE ROYAL 849
170849 |

Type:
classic, bright

Fragrance notes:
Head: mandarin, grapefruit, cistus, pepper, rosemary
Heart: patchouli, ginger, lavender, cedarwood, geranium
Base: benzoin resin, vetiver, amber, musk, dry wood

CITRUS

joyful and energetic

WITH AN ORIENTAL NOTE

PURE ROYAL 840
170840 |

Type:
attractive, bright, multi-dimensional

Fragrance notes:
Head: ginger, mandarin, lemon, basil, bergamot, violet leaf
Heart: orange flower, pepper, tobacco leaf, grapefruit flower
Base: amber, patchouli, oakmoss, vetiver, cedar wood, leather

Solid Perfume STICK

SOLID PERFUME STICK

Easily fits in a clutch bag or a suit pocket. Allows you to feel extra special in every place and at any time. Thanks to plant oils, from sweet almonds and castor oil, they leave the skin soft and velvety smooth.

- a practical shape
- pleasant to apply
- ideal for small and big social events
- inspired by PURE ROYAL perfumes

5 g

FOR HIM

PURE ROYAL 199 | 522199 |



FOR HER

PURE ROYAL 366 | 522366 |

PURE ROYAL 809 | 522809 |



UNISEX

PURE ROYAL 900 | 522900 |

PURE ROYAL 910 | 522910 |

PURE ROYAL 913 | 522913 |



PURE ROYAL 15 ML

FOR HER

- PURE ROYAL 142 | 170142.02 |
- PURE ROYAL 146 | 170146.02 |
- PURE ROYAL 147 | 170147.02 |
- PURE ROYAL 162 | 170162.02 |
- PURE ROYAL 171 | 170171.02 |
- PURE ROYAL 298 | 170298.02 |
- PURE ROYAL 317 | 170317.02 |
- PURE ROYAL 322 | 170322.02 |
- PURE ROYAL 352 | 170352.02 |
- PURE ROYAL 359 | 170359.02 |
- PURE ROYAL 362 | 170362.02 |
- PURE ROYAL 366 | 170366.02 |
- PURE ROYAL 800 | 170800.02 |
- PURE ROYAL 803 | 170803.02 |
- PURE ROYAL 807 | 170807.02 |
- PURE ROYAL 809 | 170809.02 |
- PURE ROYAL 810 | 170810.02 |
- PURE ROYAL 811 | 170811.02 |
- PURE ROYAL 817 | 170817.02 |
- PURE ROYAL 820 | 170820.02 |

FOR HIM

- PURE ROYAL 199 | 170199.02 |
- PURE ROYAL 301 | 170301.02 |
- PURE ROYAL 327 | 170327.02 |
- PURE ROYAL 334 | 170334.02 |
- PURE ROYAL 335 | 170335.02 |
- PURE ROYAL 814 | 170814.02 |
- PURE ROYAL 815 | 170815.02 |
- PURE ROYAL 821 | 170821.02 |
- PURE ROYAL 822 | 170822.02 |
- PURE ROYAL 823 | 170823.02 |



PURE ROYAL Perfume

15 ml | Fragrance: 20%





Perfumed HAND SPRAY

Beautifully fragrant hands at your fingertips. Enjoy the long-lasting fragrance, antibacterial and care properties of Pure Royal Hand Perfume - without feeling sticky. Moisturizing substances will ensure the delightful appearance of the hands and the feeling of freshness.

15 ml

- PURE ROYAL 199 (527199)
- PURE ROYAL 366 (527366)
- PURE ROYAL 809 (527809)
- PURE ROYAL 900 (527900)
- PURE ROYAL 910 (527910)

NEW



Perfumed
ANTIPERSPIRANT
Stick

PERFUMED
ANTIPERSPIRANT STICK

Effectively prevents excessive perspiration, perfectly neutralises unpleasant odour and ensures a long-lasting feeling of freshness.

- **guarantees comfort in all situations**
- **gentle for the delicate underarm skin**
- **with a beautiful scent of PURE ROYAL perfume**

75 g |

FOR HER:
366 (526366) | 809 (526809)

FOR HIM:
199 (526199)

UNISEX:
900 (526900) | 910 (526910)
913 (526913)



Perfumed
Body **SPRAY**

PERFUMED BODY SPRAY

It leaves a captivating scent on the skin that lasts for a long time. It is perfect as an alternative to perfume or a layering cosmetic to intensify their aroma.

- **its scent resembles the most beautiful PURE ROYAL composition**

150 ml

FOR HER:
362 (523362) | 366 (523366)
809 (523809) | 827 (523827)

FOR HIM:
199 (523199) | 335 (523335)
823 (523823)

UNISEX:
900 (523900) | 905 (523905)
910 (523910) | 913 (523913)



NEW FRAGRANCES





Perfumed SOAP BAR



PERFUMED SOAP BAR

Perfectly cleanses, moisturises, oils and nourishes the skin thanks to its rich formula. It softens calloused epidermis and leaves a delicate protective film.

- contains glycerine, argan and avocado oils as well as mango and shea butter
- with carbon for antibacterial and anti-inflammatory properties
- with a beautiful scent of PURE ROYAL 900 perfume

100 g | 524900 |



HARMONIOUS FRAGRANCES

Each of the cosmetics in this series has a unique fragrance that integrates harmoniously with the most popular PURE ROYAL perfumes. You will definitely find your favorite among them.

Perfumed SHOWER GEL

PERFUMED SHOWER GEL

Carefully cleanses the body leaving the scent of the most beautiful perfumes.

- pampers the senses with a silky texture
- contains moisturising and regenerating panthenol

300 ml

FOR HER:
171 (507171) | 366 (507366)
809 (507809)

FOR HIM:
199 (507199) | 815 (507815)
823 (507823)

UNISEX:
900 (507900) | 910 (507910)
913 (507913)



Perfumed Body BALM

PERFUMED BODY BALM

Envelops the skin with a scent of the most beautiful perfumes. It contains moisturising and active regenerating ingredients.

- with vitamin E, B5 and allantoin

300 ml

FOR HER:
366 (506366)
809 (506809)

UNISEX:
900 (506900)



Home PERFUME

Home Perfume fills a room with a fascinating aroma. The most beautiful PURE ROYAL fragrances are soothing to the senses, intriguing and amazing, and their unique formula guarantees they stay in the air for a very long time.

- spray as much as needed, depending on the size of a room
- trigger must be purchased separately, it is not added to the product

250 ml

NEW



1 PURE ROYAL HOMME 199
720199 |

2 PURE ROYAL FEMME 366
720366 |

3 PURE ROYAL FEMME 809
720809 |

4 PURE ROYAL UNISEX 900
720900 |

5 PURE ROYAL UNISEX 910
720910 |

Move to the forest, to a meadow full of colorful flowers or to an exotic place in the world with the help of amazingly fragrant interior perfumes. Extremely aromatic notes float in the air for a long time, enveloping each room with a fragrant aura.



Pillow MIST

PILLOW MIST

Provide yourself with the highest quality rest and a deeper sleep thanks to the scented mist for bedding from the Pure Royal line.

- **Calming and cozy compositions pleasantly envelop the senses, relax and make it easier to fall asleep.**

100 ml

NEW



FRESH FEELING | 714001

A combination of notes of green galbanum, fresh mint extracts, a romantic rose and bergamot which calms nerves.

CALM MOMENTS | 714002

A combination of soothing lavender with sandalwood used in Chinese medicine with fresh lemon and geranium.

COZY NIGHT | 714003

A combination of notes of cinnamon, cardamom, which wraps around senses, and white musk with chords of precious sandalwood and lavender.

PLEASANT EVENING | 714004

A combination of floral notes of tempting rose with soothing jasmine, enlivened with green, juicy fruits.

AMAZING SLEEP | 714005

A combination of herbal notes of lavender, rosemary and salvia, entwined with a lovely smell of sweet vanilla.



Air FRESHENER

AIR FRESHENER

The original fragrance composition smells as beautiful as your favourite PURE ROYAL perfumes. Gradually releases a distinct fragrance.

- **with a convenient elastic band to hang**
- **ideal for various interiors, e.g. home, office or car**

9,5 g, 10,5 g

FOR HER:
708052 | PURE ROYAL 809 |
708085 | PURE ROYAL 366 |

FOR HIM:
708053 | PURE ROYAL 823 |

UNISEX:
708054 | PURE ROYAL 900 |
708089 | PURE ROYAL 910 |
708090 | PURE ROYAL 913 |



Wardrobe FRAGRANCE

WARDROBE FRAGRANCE

Unique perfume compositions in your wardrobe, bedroom and office.

- **gradually release the scent**

14,2 g, 15,2 g

FOR HER:
708037 | PURE ROYAL 366 |
708043 | PURE ROYAL 809 |

FOR HIM:
708038 | PURE ROYAL 335 |
708045 | PURE ROYAL 823 |

UNISEX:
708055 | PURE ROYAL 900 |

Soy CANDLE

SOY CANDLE

At the same time, it fills the room with a beautiful scent, has a positive influence on your mood and improves the condition of your body.

- contains natural essential oils
- has a pro-health effect
- handmade
- based on plant wax
- with a cotton wick
- available in a wide range of scents

170 g



1

2

3

1 MAKE ME HAPPY | 719830

- 🕯 orange, lavender, patchouli
- 💧 floral-citrus
- ★ makes you feel better

2 PERFECT SATISFACTION | 719831

- 🕯 cedar, pine, vetiver
- 💧 woody, fresh
- ★ awakens the senses

3 TOBACCO RELIEF | 719832

- 🕯 lemongrass, orange, rosemary
- 💧 citrus, transparent
- ★ eliminates the smell of cigarette smoke

4 BREATHE EASY | 719833

- 🕯 eucalyptus, mint
- 💧 intensively refreshing
- ★ unblocks the airways

5 POSITIVE ENERGY | 719834

- 🕯 pine, rosemary
- 💧 woody-herbal
- ★ stimulates to action

6 RELAXING EVENING | 719835

- 🕯 orange, clove, cinnamon
- 💧 sweet and spicy
- ★ relaxes

- 🕯 essential oils
- 💧 fragrance
- ★ aromatherapy properties



4

5

6



THEY DON'T HARM THE ENVIRONMENT, THEY HELP YOU

ENGRAVING ON THE GLASS

PURE ROYAL ECO candles have been created with the Eco Friendly philosophy in mind. Not only do they not harm the environment, they help you by releasing the beneficial properties of essential oils.

FRIENDLY TO PEOPLE AND NATURE

UNIQUE SOY WAX

Eco-friendly soy candles:

- are biodegradable
- no smoke or harmful emissions
- zinc- and lead-free wick
- they burn to the end
- is odourless, so you can clearly smell the essential oils contained in the candle
- burns at a low temperature so you cannot burn yourself
- can be easily washed off any surface

HOME RITUAL Fragrance

FRAGRANCE HOME RITUAL

They enable you to experience an exceptional scented home ritual every day. Allow yourself a bit of luxury with the unique scents in a beautiful setting.

- sophisticated fragrance compositions will fill your room with a unique, long-lasting scent
- elegant design
- long-lasting – up to 70 days

100 ml

FOR HER:

- 718362 | PURE ROYAL 362 |
- 718366 | PURE ROYAL 366 |
- 718708 | PURE ROYAL 708 |
- 718809 | PURE ROYAL 809 |

FOR HIM:

- 718199 | PURE ROYAL 199 |
- 718335 | PURE ROYAL 335 |

UNISEX:

- 718900 | PURE ROYAL 900 |
- 718907 | PURE ROYAL 907 |
- 718910 | PURE ROYAL 910 |



NEW FRAGRANCES



HOME RITUAL Fragrance Candle

HOME RITUAL FRAGRANCE CANDLE

With a captivating scent and the highest quality standard. It introduces a sensual mood to the room, at the same time being an appealing decoration for any interior. Contains paraffin produced in a modern, hydrotreating process that meets the strict requirements of the German RAL standards.

- burn time: 35 to 40 hours
- immersed in an elegant glass
- with timeless PURE ROYAL and PURE ROYAL UNISEX perfumes

150 g

FOR HER:

- 719809 | PURE ROYAL 809 |

UNISEX:

- 719900 | PURE ROYAL 900 |
- 719910 | PURE ROYAL 910 |

NEW FRAGRANCE

FOR HER:

- 719814 | PURE ROYAL 366 |

Fancy oriental scent spiced up with pink peppercorn? Sensual PURE ROYAL 366 candle with irresistible composition is perfect for you and your urban interiors.



STYLISH DESIGN, UNIQUE FRAGRANCE

Home Ritual WAX MELTS

HOME RITUAL WAX MELTS

HOME RITUAL SCENTED WAX MELTS fill the interior of your home with a beautiful scent. Thanks to the unique fragrance compositions, it makes it even more enjoyable to spend time at home. The wax melts are made of eco-friendly raw materials of the highest quality and are not only good for your household members, but also for the environment.

75 g

- 1 LEMONGRASS
719840 |
- 2 WHITE SANDALWOOD
719841 |
- 3 MELT WAX 900
719845 |
- 4 MELT WAX 910
719846 |

NEW



1



2



3



4



A woman with long, dark hair is captured in a dynamic, dancing pose. She is wearing a long, flowing, white, semi-transparent dress with long sleeves and a high collar. Her hair is blowing in the wind, and her head is tilted back, eyes closed, as if she is in a state of bliss or freedom. The setting is a sunlit room with a brick wall on the left and large windows in the background. The lighting is warm and golden, creating a dreamy atmosphere. The overall mood is one of elegance and grace.

FEDERICO MAHORA

PURE
H O M E

Pure

It is the second world of FM WORLD that welcomes you with subtle fragrances and the possibility of being transferred to another world. Feel free with the fragrances that you have known for so long and are so dear to you. Taste your favorite fragrances in unique products...



ENGRAVING ON THE GLASS

PURE

Perfume

50 ml | Fragrance: 20%

NEW

FLORAL

sensual and romantic

WITH A FRUITY NOTE

PURE 499
100499 |

Type:
powder, charming

Fragrance notes:
Head: pear, red fruits, red apple
Heart: peach, lily of the valley, cedarwood
Base: vanilla, caramel, musks



FLORAL

sensual and romantic

WITH A FRUITY NOTE

PURE 10
100010 |

Type:
warm, sweet

Fragrance notes:

Head: mandarin, ivy leaves, champaca flowers
Heart: jasmine, African orchid, rose
Base: amaranth wood, blackberry, musk

PURE 17
100017 |

Type:
stimulating, friendly

Fragrance notes:

Head: melon, peach, apple
Heart: freesia, lily, mimosa, tuberose, jasmine
Base: cedarwood, ylang-ylang, musk

PURE 25
100025 |

Type:
harmonious, slightly brash

Fragrance notes:

Head: green apple, water accents
Heart: jasmine, freesia, iris, passiflora
Base: sandalwood, cedarwood, vanilla

PURE 180
100180 |

Type:
seductive, changeable

Fragrance notes:

Head: lychee, raspberry, rose
Heart: freesia, lily of the valley, cedarwood
Base: vanilla, ambergris, vetiver

PURE 420
100420 |

Type:
seductively sweet, tempting

Fragrance notes:

Head: red fruits, mandarin
Heart: lily of the valley, peony
Base: praline, amber, musk, caramel

PURE 427
100427 |

Type:
joyful, captivating

Fragrance notes:

Head: raspberry, bergamot
Heart: rose, iris, violet
Base: patchouli

PURE 437
100437 |

Type:
seductive, full of sweetness

Fragrance notes:

Head: bergamot, strawberry, fresh flowers
Heart: peach, Osmanthus, raspberry macaroons
Base: cocoa, amber, vanilla

PURE 438
100438 |

Type:
sweet, feminine, subtle

Fragrance notes:

Head: apple flower, nectarine, pear
Heart: jasmine, peony, heliotrope
Base: brown sugar, olibanum, vanilla, musk

PURE 443
100443 |

Type:
elegant, tempting, warm

Fragrance notes:

Head: orange, bergamot, blackcurrant
Heart: jasmine, orange flower, ylang-ylang, lily of the valley
Base: cedarwood, sandalwood, vanilla

PURE 447
100447 |

Type:
expressive, charming, serene

Fragrance notes:

Head: exotic fruits, red fruits, bergamot, yellow plum, pink berries
Heart: lily of the valley, freesia, rose, jasmine, peach
Base: patchouli, moss, musk, amberwood, sandalwood

PURE 449
100449 |

Type:
multi-dimensional, thrilling, full of charm

Fragrance notes:

Head: lemon, mandarin, pear, bergamot, liquorice, rhubarb, peach, pineapple, coconut, plum, grapefruit, cardamom
Heart: jasmine sambac, rose, lily of the valley, orange tree, sunny notes, violet, geranium, wine lees
Base: vanilla, gourmand, patchouli, musk, sandalwood, cedarwood, dry wood

PURE 486
100486 |

Type:
sweet, girly, appetising

Fragrance notes:

Head: pink pepper, raspberry, bergamot
Heart: peony, rose, lily of the valley, iris
Base: sandalwood, patchouli, cedarwood, musk

PURE 700
100700 |

Type:
feminine, sensual

Fragrance notes:

Head: lemon, apple, violet leaves
Heart: peony, lily of the valley
Base: cedarwood, musk, amber

PURE 716
100716 |

Type:
sweet, charming, carefree

Fragrance notes:

Head: mandarin, lemon, blackberry, blackcurrant
Heart: jasmine, magnolia, water notes
Base: musk, cedar wood, sandalwood

WITH A CHYPRE NOTE

PURE 485
100485 |

Type:
surprising, ambiguous

Fragrance notes:

Head: lemon, blackcurrent, cranberry leaves
Heart: rose, orange blossom, jasmine, peach
Base: patchouli, cedarwood, amber, vanilla, tonka bean, oakmoss, musk

PURE 493
100493 |

Type:
seductive, lovely

Fragrance notes:

Head: raspberry, blackcurrant, pear, orange
Heart: rose, freesia
Base: vanilla, musk, cashmere, patchouli

PURE 706
100706 |

Type:
soft, powdery, romantic

Fragrance notes:

Head: bergamot, violet leaves, coriander
Heart: peach, water lily, rose, violet, narcissus
Base: vetiver, cedarwood, sandalwood, musk

WITH A GREEN NOTE

PURE 01
100001 |

Type:
cool and warm at the same time

Fragrance notes:

Head: lemon, tea, cranberry
Heart: jasmine, peony, water lily
Base: woody notes, patchouli

PURE 81
100081 |

Type:
eccentric but subtle

Fragrance notes:

Head: green apple, cucumber, magnolia
Heart: lily of the valley, rose, violet
Base: sandalwood, ambergris

WITH A WOODY NOTE

PURE 414
100414 |

Type:
independent, very feminine

Fragrance notes:

Head: cactus
Heart: pink freesia, jasmine, rose
Base: cedarwood, woody notes

PURE 445
100445 |

Type:
joyful, vibrating, juicy

Fragrance notes:

Head: mandarin, bergamot, nectarine
Heart: rose, jasmine, honeysuckle, water lily
Base: sandalwood, patchouli, cedarwood, vanilla, musk

WITH A WATER NOTE

PURE 07
100007 |

Type:
balanced, mild

Fragrance notes:

Head: pineapple, peony, sweet pea
Heart: freesia, jasmine, lily
Base: sandalwood, cedarwood, musk

PURE 174
100174 |

Type:
magical, flickering

Fragrance notes:

Head: freesia, lychee
Heart: lily, magnolia, jasmine, ginger, pepper
Base: amber, musk

PURE 488
100488 |

Type:
delicate, radiant, elegant

Fragrance notes:

Head: grapefruit, bergamot, lychee, water notes
Heart: rose, jasmine, magnolia, clove
Base: sandalwood, ambergris, oakmoss, cedarwood, musk

PURE 701
100701 |

Type:
magnetic, sensual

Fragrance notes:

Head: pineapple, rhubarb, apple
Heart: jasmine, lily of the valley, freesia
Base: musk, peach



PURE Perfume

50 ml | Fragrance: 20%

FLORAL

sensual and romantic

WITH A CITRUS NOTE

PURE 491
100491 |

Type:
serene, carefree

Fragrance notes:
Head: ylang-ylang, lemon, sea breeze
Heart: jasmine, rose, orange blossom
Base: plum, cashmeran, musk

PURE 702
100702 |

Type:
expressive, full of passion

Fragrance notes:
Head: mandarin, bergamot, water notes
Heart: jasmine, geranium, lily of the valley
Base: musk, amber

WITH AN ALDEHYDE NOTE

PURE 21
100021 |

Type:
classic, warm, enveloping

Fragrance notes:
Head: aldehyde, ylang-ylang, orange blossom
Heart: rose, lily of the valley, iris
Base: civet, oakmoss, sandalwood

WITH AN ORIENTAL NOTE

PURE 20
100020 |

Type:
seductive, sensual

Fragrance notes:
Head: Osmanthus, black tea, bergamot
Heart: rose, freesia, magnolia, orchid
Base: musk, patchouli

PURE 97
100097 |

Type:
delightful, velvety

Fragrance notes:
Head: freesia, lily of the valley, rose
Heart: lily, gardenia, palm tree, narcissus
Base: blackcurrant, musk, oakmoss

PURE 132
100132 |

Type:
exclusive, intense

Fragrance notes:
Head: ginger, cardamom, pepper, orange
Heart: tuberose, coconut, gardenia, peony
Base: ambergris, musk

PURE 183
100183 |

Type:
sharp, strong

Fragrance notes:
Head: cranberry, pink pepper, tamarind
Heart: black violet, cocoa, rose, hellebore
Base: patchouli, vanilla, Massoia wood

PURE 239
100239 |

Type:
vibrating, intense

Fragrance notes:
Head: cardamom, pink pepper, mandarin
Heart: iris, campanula, Ceylon
Base: cedarwood, vetiver, musk

PURE 434
100434 |

Type:
audacious, addictive

Fragrance notes:
Head: orange, grapefruit, liquorice
Heart: rose, orange blossom, lily of the valley, iris
Base: sandalwood, vanilla, musk

PURE 444
100444 |

Type:
tempting, surprising, warm

Fragrance notes:
Head: bergamot, pear, sweet orange
Heart: rose, iris, violet, ylang-ylang
Base: vanilla, musk, patchouli, coffee

PURE 446
100446 |

Type:
rebellious, sensual

Fragrance notes:
Head: bergamot, apple, hyacinth, petitgrain
Heart: orange blossom, jasmine, tuberose, rose
Base: cedarwood, vanilla, musk, cashmere wood, dry amber, heliotrope

PURE 487
100487 |

Type:
fantasy, sensual, alluring

Fragrance notes:
Head: pink pepper, raspberry, blackcurrent, apple
Heart: rose, peony, clove, iris
Base: patchouli, sandalwood, musk, vanilla

PURE 489
100489 |

Type:
futuristic, eccentric

Fragrance notes:
Head: green leaves, anise, blackcurrent
Heart: orange blossom, water notes, lily of the valley, cashmere wood
Base: cedarwood, patchouli, tonka bean, ambergris



PURE Perfume

50 ml | Fragrance: 20%



ORIENTAL

strong and untamed

WITH A FLORAL NOTE

PURE 09
100009 |

Type: deeply memorable, magical

Fragrance notes:

Head: violet, cardamom, green fruits
Heart: almond, jasmine
Base: vanilla, musk

PURE 101
100101 |

Type: sophisticated, unforgettable

Fragrance notes:

Head: orange blossom, pear
Heart: ginger, incense
Base: sandalwood, vanilla, honey, musk

PURE 257
100257 |

Type: exquisite, surprising

Fragrance notes:

Head: rose, honeysuckle, mandarin
Heart: daisy, jasmine
Base: musk, patchouli

PURE 431
100431 |

Type: cheeky, sensual, alluring

Fragrance notes:

Head: bergamot, apple
Heart: jasmine, lily of the valley
Base: tonka bean, musk

PURE 436
100436 |

Type: charming, rebellious

Fragrance notes:

Head: coconut, hazelnut, lily of the valley
Heart: orange blossom, rose
Base: cashmere wood, vanilla, amber

PURE 440
100440 |

Type: exquisite, sensual

Fragrance notes:

Head: blackcurrant, hazelnut, peach, rhubarb
Heart: iris, orange blossom, caramel, coconut
Base: vanilla, patchouli, musk

PURE 441
100441 |

Type: fresh, liberated

Fragrance notes:

Head: bergamot, lavender, ylang-ylang
Heart: jasmine, iris
Base: vanilla, sandalwood, musk

PURE 442
100442 |

Type: warm, spicy, intriguing

Fragrance notes:

Head: rose, orange flower, pear
Heart: coffee, jasmine, peach
Base: vanilla, patchouli, cedarwood

PURE 492
100492 |

Type: light, powdery

Fragrance notes:

Head: rhubarb, narcissus
Heart: almond, milk
Base: cashmere, cedarwood

PURE 717
100717 |

Type: enticing, rebellious

Fragrance notes:

Head: pepper, fresh flowers, water musk
Heart: jasmine, white musk
Base: sandalwood, cashmere, frozen musk

WITH A WOODY NOTE

PURE 26
100026 |

Type: warming, enveloping

Fragrance notes:

Head: guava, raspberry, bergamot, coconut
Heart: water lily, rose, pepper, magnolia
Base: sandalwood, vanilla, coffee, caramel

PURE 448
100448 |

Type: surprising, seductive, with a hint of sweetness

Fragrance notes:

Head: rose petals, saffron blossom, white woods
Heart: jasmine sambac, plum, vanilla planifolia
Base: vetiver, amber, musk

WITH A SPICY NOTE

PURE 24
100024 |

Type: exotic, very spicy

Fragrance notes:

Head: mandarin, cumin, clove
Heart: mango, heliotrope, cardamom
Base: musk, vanilla, ambergris

PURE 173
100173 |

Type: dreamlike, dimmed

Fragrance notes:

Head: anise, liquorice
Heart: Jacaranda wood, bitter almond
Base: sandalwood, musk, moss

PURE 177
100177 |

Type: triggering desires, warm

Fragrance notes:

Head: bergamot, bay leaf, pink pepper
Heart: saffron, orange blossom
Base: incense, vanilla, sandalwood

WITH A FRUITY NOTE

PURE 12
100012 |

Type: hypnotising, seductive

Fragrance notes:

Head: passiflora
Heart: jasmine, gardenia
Base: vanilla, maple, vetiver

PURE 32
100032 |

Type: fascinating, ambiguous

Fragrance notes:

Head: melon, coconut, mandarin, candy floss
Heart: blackberry, mango, plum, honey
Base: vanilla, chocolate, toffee

PURE 98
100098 |

Type: fresh, subtle

Fragrance notes:

Head: blackcurrant, bergamot, lemon
Heart: jasmine, lily of the valley, rose
Base: sandalwood, cedarwood, amber

PURE 237
100237 |

Type: provocative, flirty

Fragrance notes:

Head: exotic fruits, blackcurrant
Heart: peony, jasmine, plum
Base: vanilla, musk, ambergris

PURE 413
100413 |

Type: very sweet, slightly flirtatious

Fragrance notes:

Head: blackcurrant, pear
Heart: iris, jasmine, orange blossom
Base: chocolate pralines, patchouli, vanilla



PURE 426
100426 |

Type: bold, addictive

Fragrance notes:

Head: bergamot, neroli
Heart: orange blossom, raspberry, jasmine
Base: patchouli, vanilla, cashmere wood

PURE Perfume

50 ml | Fragrance: 20%



PURE Perfume

50 ml | Fragrance: 20%

CITRUS

joyful and energetic

WITH A FRUITY NOTE

PURE 419
100419 |

Type:
optimistic, casual

Fragrance notes:
Head: citrus fruits, grapefruit, bergamot, water notes, calone, melon, peach
Heart: woody notes, jasmine, lily of the valley
Base: musk, ambergris

WITH A LEMON NOTE

PURE 33
100033 |

Type:
refreshing, joyful

Fragrance notes:
Head: mango, Sicilian lemon, apple
Heart: jasmine, bamboo, white rose
Base: cedarwood, ambergris

WITH A MANDARIN NOTE

PURE 23
100023 |

Type:
sensual, with a bit of sweetness

Fragrance notes:
Head: lily of the valley, red orange
Heart: mandarin, jasmine, rose
Base: vanilla, sandalwood, white musk

WITH AN ORANGE NOTE

PURE 06
100006 |

Type:
ethereal, discrete

Fragrance notes:
Head: lemon, bergamot, mint
Heart: orange, green tea
Base: oakmoss, ambergris

WITH AN ORIENTAL NOTE

PURE 484
100484 |

Type:
bright and impressive at the same time

Fragrance notes:
Head: mandarin, orange, nutmeg, clove
Heart: orange blossom, jasmine, tuberose, lavender
Base: vanilla, labdanum, patchouli, sandalwood

CHYPRE

sensual and tempting

WITH A FLORAL NOTE

PURE 432
100432 |

Type:
chic, full of charm

Fragrance notes:
Head: mandarin, bergamot, green notes
Heart: rose, jasmine
Base: woody notes, musk

WITH A WOODY NOTE

PURE 18
100018 |

Type:
radiant, alluring

Fragrance notes:
Head: orange, orange blossom
Heart: rose, jasmine, ylang-ylang
Base: white musk, vetiver, tonka bean, vanilla

WITH A FRUITY NOTE

PURE 05
100005 |

Type:
intriguing, modern

Fragrance notes:
Head: freesia, gardenia
Heart: sandalwood, rose, coriander
Base: vanilla, vetiver, patchouli

PURE 16
100016 |

Type:
fabulous, fascinating

Fragrance notes:
Head: mandarin, pear, green notes
Heart: orchid
Base: patchouli, toffee

PURE 34
100034 |

Type:
free, joyful

Fragrance notes:
Head: iris, pineapple, hyacinth, pink pepper
Heart: jasmine, lemon
Base: vanilla, vetiver, musk

PURE 80
100080 |

Type:
surprising, appetising

Fragrance notes:
Head: strawberry sorbet, cherry, pineapple
Heart: caramel popcorn, violet, rose
Base: musk, ambergris, patchouli

PURE 372
100372 |

Type:
elegant, classic, balanced

Fragrance notes:
Head: patchouli, green apple, bergamot, lemon, pink pepper
Heart: sandalwood, rose, musk
Base: peach, blackcurrant, lily, ylang-ylang, amber

WOODY

sophisticated and classy

WITH AN ORIENTAL NOTE

PURE 703
100703 |

Type:
fresh, light, joyful

Fragrance notes:
Head: lemon, blackcurrant, cranberry, tea leaves
Heart: water lily, rose, white peony
Base: vanilla, patchouli, musk

WITH A FLORAL NOTE

PURE 241
100241 |

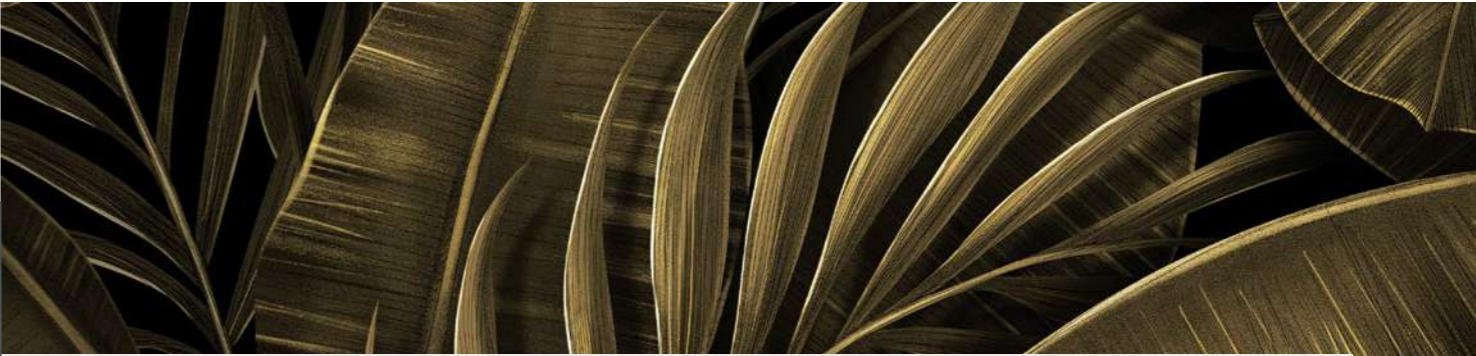
Type:
seductive, comfortable, full of charm

Fragrance notes:
Head: bergamot
Heart: ylang-ylang, Casablanca lily, orange blossom
Base: sandalwood, amber resin, vanilla



PURE Perfume

50 ml | Fragrance: 20%



ORIENTAL

strong and untamed

WITH A FOUGERE NOTE

PURE 494
100494 |

Type:
transparent, bright

Fragrance notes:
Head: orange, cinnamon
Heart: iris, vetiver, chestnut
Base: cashmere, tonka bean

PURE 496
100496 |

Type:
powerful but fresh

Fragrance notes:
Head: apple, black pepper, bergamot
Heart: cinnamon, cardamom
Base: musk, vetiver, chestnut

WITH A CITRUS NOTE

PURE 495
100495 |

Type:
transparent, inviting

Fragrance notes:
Head: mandarin
Heart: coconut water
Base: amber

WOODY

sophisticated and classy

WITH A CITRUS NOTE

PURE 497
100497 |

Type:
positive, elegant

Fragrance notes:
Head: grapefruit, mandarin, lemon, pepper
Heart: juniper, cedarwood, chilli, geranium
Base: patchouli, vetiver, moss, woody and amber notes

CHYPRE

sensual and tempting

WITH A FRUITY NOTE

PURE 498
100498 |

Type:
transparent, trustworthy

Fragrance notes:
Head: bergamot, melon, elemi resin, pineapple, orange, blackcurrant, lemon, apple, pink pepper
Heart: rose, lily of the valley, absinth, lavender, cardamom
Base: cedarwood, moss, leather, Haitian vetiver, patchouli, dry wood, musk

ORIENTAL

strong and untamed

WITH A SPICY NOTE

PURE 224
100224 |

Type:
sweet, seductive

Fragrance notes:

Head: bergamot, grapefruit, grass
Heart: saffron, violet, nutmeg, jasmine
Base: cane sugar, vanilla, ambergris

PURE 466
100466 |

Type:
sexy, intriguing, smoky

Fragrance notes:

Head: bergamot, basil, lavender, orange, lemon
Heart: apple blossom, heliotrope, water notes, watermelon, clove
Base: musk, cedarwood, tonka bean, sandalwood, guaiac wood

PURE 719
100719 |

Type:
transparent, surprising

Fragrance notes:

Head: cypress, cardamom
Heart: cashmere, sage
Base: neroli, leather, patchouli

WITH A FLORAL NOTE

PURE 52
100052 |

Type:
thrilling, spirited

Fragrance notes:

Head: apple, bergamot, mint
Heart: jasmine, geranium, lavender
Base: cinnamon, clove, musk

PURE 465
100465 |

Type:
suggestive, aromatic

Fragrance notes:

Head: cardamom, bergamot, lemon, mint, orange
Heart: sage, lavender, orange blossom, tonka bean, petitgrain
Base: sandalwood, vanilla, ambergris, musk

PURE 481
100481 |

Type:
modern, flamboyant, extravagant rebellious

Fragrance notes:

Head: bergamot, cypress, fresh flowers
Heart: iris, lavender, Blonde Woods
Base: amber, iris, musk

WITH AN AMBERGRIS NOTE

PURE 64
100064 |

Type:
tasteful, sensual

Fragrance notes:

Head: mandarin, cedarwood, anise
Heart: rosemary, olive tree flowers
Base: musk, guaiacum, tonka bean

WITH A WOODY NOTE

PURE 471
100471 |

Type:
mysterious, extravagant

Fragrance notes:

Head: mandarin, orange
Heart: cinnamon, tobacco, clove
Base: patchouli, tonka bean, myrrh

PURE 475
100475 |

Type:
warm, attractive

Fragrance notes:

Head: bergamot, mandarin, lemon, cardamom
Heart: lavender, jasmine, cyclamen
Base: cedarwood, musk, patchouli, tonka bean

WITH A FRUITY NOTE

PURE 478
100478 |

Type:
invigorating, passionate, modern

Fragrance notes:

Head: grapefruit, yuzu, orange, green apple
Heart: geranium, ginger, watermelon, cinnamon, cloves
Base: cedarwood, sandalwood, vetiver, amber

PURE 482
100482 |

Type:
stimulating, fresh, thrilling

Fragrance notes:

Head: lemon, yellow mandarin, pineapple, apple, bergamot, green leaves, grapefruit
Heart: nutmeg, black pepper, saffron, ginger, orange tree, cardamom
Base: vanilla, cedarwood, amber, dry wood, styrax, patchouli, tonka bean, Haitian vetiver

CITRUS

joyful and energetic

WITH A LEMON NOTE

PURE 57
100057 |

Type:
full of sun, magnificent

Fragrance notes:

Head: plum, apple, bergamot
Heart: cinnamon, pink pepper
Base: vanilla, Jamaican rum

WITH AN ORANGE NOTE

PURE 93
100093 |

Type:
modern, vibrant

Fragrance notes:

Head: pineapple, rosemary, bergamot
Heart: cyclamen, lavender, jasmine, ginger
Base: oakmoss, ivy

WITH A MANDARIN NOTE

PURE 134
100134 |

Type:
refreshing, captivating

Fragrance notes:

Head: bitter orange, lemon, bergamot
Heart: rosemary, seagrass, violet
Base: patchouli, cedarwood, ambergris

PURE 452
100452 |

Type:
very refreshing, twinkling

Fragrance notes:

Head: aldehyde, mint, citrus fruits, water notes
Heart: neroli, cedarwood, pepper, cypress
Base: tonka bean, vanilla, vetiver

WITH A WOODY NOTE

PURE 718
100718 |

Type:
dynamic, charismatic

Fragrance notes:

Head: orange, lemon, aldehyde notes
Heart: apple, cardamom, jasmine
Base: vetiver, cedar wood, musk

WITH AN ORIENTAL NOTE

PURE 721
100721 |

Type:
transparent, positive, combative

Fragrance notes:

Head: mandarin, melon, orange, lemon, lavender, sage, green apple
Heart: coriander, jasmine, freesia, cardamom, cinnamon, pepper
Base: tonka bean, cedar wood, amber, musk, cistus



PURE Perfume

50 ml | Fragrance: 20%

WOODY

sophisticated and classy

WITH A FRUITY NOTE

PURE 55
100055 |

Type:
light and elegant

Fragrance notes:
Head: coriander, apple
Heart: incense, Sichuan pepper
Base: vanilla, woody notes

PURE 472
100472 |

Type:
expressive, luxurious

Fragrance notes:
Head: bergamot, blackcurrant, lime
Heart: apple, pineapple, rosemary, elemi resin
Base: musk, patchouli, cedarwood

PURE 479
100479 |

Type:
fresh, sassy, sophisticated

Fragrance notes:
Head notes: Sicilian bergamot, Italian lemon
Heart notes: violet leaves, geranium, wild jasmine
Base notes: white musk, oakmoss, cedarwood

WITH A WATER NOTE

PURE 457
100457 |

Type:
fresh, minimalist

Fragrance notes:
Head: grapefruit, mandarin, water notes
Heart: jasmine, bay leaf
Base: ambergris, patchouli, oakmoss

PURE 474
100474 |

Type:
independent, alluring

Fragrance notes:
Head: mint, lemon
Heart: cardamom, geranium, marine notes
Base: cedarwood, musk, patchouli, sandalwood

WITH A GOURMAND NOTE

PURE 720
100720 |

Type:
exceptional, appetising, coquettish

Fragrance notes:
Head: pineapple, mugwort, lavender
Heart: ginger, coconut, pepper, spicy notes
Base: vanilla, moss, cedar wood, dry wood, gourmand notes

CHYPRE

sensual and tempting

WITH A WOODY NOTE

PURE 56
100056 |

Type:
inflaming senses, vibrating

Fragrance notes:
Head: grapefruit, lavender, nutmeg flower, honeysuckle
Heart: raspberry, heliotrope, clove
Base: cedarwood, resin, juniper

WITH AMBERGRIS AND MUSK NOTES

PURE 110
100110 |

Type:
a little brash, rebellious

Fragrance notes:
Head: lavender, bergamot, cardamom
Heart: orange blossom, lily of the valley
Base: musk, ambergris, vanilla

WITH AN ORIENTAL NOTE

PURE 490
100490 |

Type:
brave, original, sensual

Fragrance notes:
Head: juniper, bergamot, red orange
Heart: red thyme, nutmeg, sage
Base: musk, patchouli, oakmoss

WITH A WATER NOTE

PURE 704
100704 |

Type:
fresh, attractive, controversial

Fragrance notes:
Head: lemon, ginger, apple
Heart: sea breeze, lavender, geranium
Base: vetiver, tonka bean, cedarwood, amber

PURE 705
100705 |

Type:
warm, charming, pure

Fragrance notes:
Head: water notes, spicy notes, fruity notes
Heart: floral notes, woody notes, green notes
Base: musk, ambergris, moss



PURE Perfume

50 ml | Fragrance: 20%

FOUGERE

seductive and classic

WITH A FERN NOTE

PURE 43
100043 |

Type:
energising, eye-catching

Fragrance notes:
Head: mandarin, kumquat, pink pepper
Heart: coriander, freesia, cardamom
Base: leather notes, Jacaranda tree

PURE 135
100135 |

Type:
surprising, intense

Fragrance notes:
Head: bitter orange, mandarin
Heart: santolina, seagrass
Base: ambergris, woody notes

WITH A LAVENDER NOTE

PURE 54
100054 |

Type:
ambiguous, fresh

Fragrance notes:
Head: mint, bergamot, rum
Heart: cedarwood, sage, lavender
Base: oakmoss, vetiver, suede

PURE 473
100473 |

Type:
fresh, noble, rebellious

Fragrance notes:
Head: bergamot, pink pepper
Heart: amber, lavender
Base: patchouli, vetiver, dry wood

PURE 480
100480 |

Type:
curious, harmonious, mysterious

Fragrance notes:
Head notes: lemon, bergamot, neroli
Heart notes: geranium, hyacinth, lavender, clary sage, marigold
Base notes: cedarwood, tonka bean, ambergris, oakmoss, musk

PURE 483
100483 |

Type:
mature, toned, retro

Fragrance notes:
Head: apple, mandarin, orange, cinnamon, sage
Heart: lavender, patchouli, rosemary
Base: sandalwood, olive tree



Perfumed Body BALM

PERFUMED BODY BALM

Envelops the skin with a scent of the most beautiful perfumes. It contains moisturising and active regenerating ingredients.

- with vitamin E, B5 and allantoin

300 ml

FOR HER:
18 (506018) | 20 (506020) | 33 (506033)
81 (506081) | 173 (506173)



Perfumed SHOWER GEL

PERFUMED SHOWER GEL

Carefully cleanses the body leaving the scent of the most beautiful perfumes.

- pampers the senses with a silky texture
- contains moisturising and regenerating panthenol

300 ml

FOR HER:
18 (507018)
20 (507020)
33 (507033)
81 (507081)
173 (507173)

FOR HIM:
52 (507052)
134 (507134)
472 (507472)
473 (507473)



PHEROMONE

FOR HER

FLIRT

05 120005	10 120010	18 120018	20 120020
---------------------	---------------------	---------------------	---------------------

23 120023	101 120101	431 120431
---------------------	----------------------	----------------------

SUCCESS

01 120001	33 120033	81 120081	98 120098
---------------------	---------------------	---------------------	---------------------

436 120436	489 120489
----------------------	----------------------

CHARM

34 120034	413 120413
---------------------	----------------------

FOR HIM

SEDUCTION

52 120052	110 120110	473 120473
---------------------	----------------------	----------------------

SUCCESS

64 120064	134 120134	472 120472
---------------------	----------------------	----------------------

SELF-CONFIDENCE

56 120056	135 120135	457 120457
---------------------	----------------------	----------------------



Travel Perfume ATOMISER

TRAVEL VIAL

Now, your favourite perfume can always be with you, even if you're travelling with a small amount of luggage. Comfortable and classy. The twist-up atomiser with a glass refill keeps your favourite fragrance safe while travelling. In an elegant matt aluminium container.

HEIGHT: 9,5 cm | 8 ml

GOLD | 920045 |

SILVER | 920090 |



PHEROMONE Perfume

50 ml | Fragrance: 20%

PHEROMONES

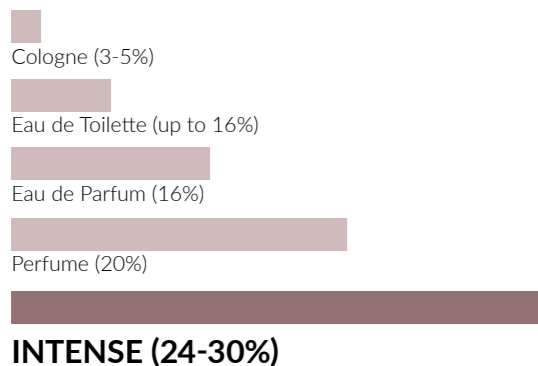
Pheromones are odourless substances added to perfume to reinforce their stimulating effect; they are the secret weapon, with a mission to boost attractiveness and self-confidence.





INTENSE Perfume

50 ml



FOR HER

FRAGRANCE: 30%

FLORAL

sensual and romantic

WITH A FRUITY NOTE

INTENSE 10 | 110010 |
a fragrance that provokes

INTENSE 17 | 110017 |
the power of seduction

INTENSE 25 | 110025 |
a charming composition

WITH AN ORIENTAL NOTE

INTENSE 20 | 110020 |
an explosion of passion

INTENSE 97 | 110097 |
always in style

INTENSE 489 | 110489 |
a breath of innovation

WITH A GREEN NOTE

INTENSE 81 | 110081 |
fresh and subtle

WITH AN ALDEHYDE NOTE

INTENSE 21 | 110021 |
classic

CITRUS

joyful and energetic

WITH A LEMON NOTE

INTENSE 33 | 110033 |
refreshing and energetic

WITH A MANDARIN NOTE

INTENSE 23 | 110023 |
romantic & joyful

CHYPRE

sensual and tempting

WITH A FRUITY NOTE

INTENSE 05 | 110005 |
inflames the senses

INTENSE 16 | 110016 |
enticing sweetness

WITH A WOODY NOTE

INTENSE 18 | 110018 |
slight provocation

ORIENTAL

strong and untamed

WITH A FLORAL NOTE

INTENSE 09 | 110009 |
discover the secret

INTENSE 436 | 110436 |
confidence booster

WITH A FRUITY NOTE

INTENSE 98 | 110098 |
business elegance

INTENSE 413 | 110413 |
liberated

WITH A SPICY NOTE

INTENSE 173 | 110173 |
exotic journey

FOR HIM

FRAGRANCE: 24%

CHYPRE

sensual and tempting

WITH A WOODY NOTE

INTENSE 56 | 110056 |
definitely modern

WITH AMBERGRIS AND MUSK NOTES

INTENSE 110 | 110110 |
liberated, manly and brave

FOUGERE

seductive and classic

WITH A FERN NOTE

INTENSE 43 | 110043 |
antidote to boredom

WITH A LAVENDER NOTE

INTENSE 473 | 110473 |
rebellious soul

ORIENTAL

strong and untamed

WITH A FLORAL NOTE

INTENSE 52 | 110052 |
the definition of a twenty-first century man

WITH AN AMBERGRIS NOTE

INTENSE 64 | 110064 |
the power of elegance

CITRUS

joyful and energetic

WITH A MANDARIN NOTE

INTENSE 134 | 110134 |
the essence of lightness

WOODY

sophisticated and classy

WITH A FRUITY NOTE

INTENSE 472 | 110472 |
impresses with its character

WITH A WATER NOTE

INTENSE 457 | 110457 |
stimulates to action

Perfumed Body MIST

PERFUMED BODY MIST

Is like a sea breeze on your skin, providing an immediate refreshing effect. It leaves a beautiful scent of PURE parfum on the skin.

- contains an exquisite emollient – coconut oil dispersed in water with a skincare effect
- ideal for hot days as an alternative to perfume

150 ml



AVAILABLE FRAGRANCES:
 18 (521018) | 20 (521020)
 372 (521372) | 489 (521489)



Perfumed ANTIPERSPIRANT Roll-On

PERFUMED ANTIPERSPIRANT ROLL-ON

Thanks to a combination of antiperspirant properties and fragrance composition, it ensures a sense of comfort and freshness.

- eliminates unpleasant odour caused by excessive sweating
- do not leave marks on clothes
- alcohol-free formula
- wide range of fragrances

50 ml

FOR HER:
 18 (508018) | 20 (508020) | 33 (508033)
 81 (508081) | 173 (508173)

FOR HIM:
 52 (508052) | 134 (508134) | 199 (508199)
 472 (508472) | 473 (508473)

Fragrance-Free ANTIPERSPIRANT Roll-On Unisex

FRAGRANCE-FREE ANTIPERSPIRANT ROLL-ON

Universal roll-on can be combined with any perfume scent. It provides long-lasting protection against unpleasant odour.

- for women and men
- does not leave marks on clothes
- alcohol-free formula

50 ml | 508000



HOME RITUAL Fragrance

FRAGRANCE HOME RITUAL

They enable you to experience an exceptional scented home ritual every day. Allow yourself a bit of luxury with the unique scents in a beautiful setting.

- sophisticated fragrance compositions will fill your room with a unique, long-lasting scent
- elegant design
- long-lasting - up to 70 days

100 ml



NEW FRAGRANCES

FOR HER:

- 718005 | PURE 05 |
- 718010 | PURE 10 |
- 718016 | PURE 16 |
- 718018 | PURE 18 |
- 718020 | PURE 20 |
- 718021 | PURE 21 |
- 718032 | PURE 32 |
- 718033 | PURE 33 |
- 718034 | PURE 34 |
- 718081 | PURE 81 |
- 718372 | PURE 372 |
- 718413 | PURE 413 |
- 718431 | PURE 431 |
- 718436 | PURE 436 |
- 718489 | PURE 489 |

FOR HIM:

- 718052 | PURE 52 |
- 718056 | PURE 56 |
- 718134 | PURE 134 |
- 718457 | PURE 457 |
- 718472 | PURE 472 |
- 718473 | PURE 473 |



STYLISH DESIGN,
UNIQUE FRAGRANCE

The prestigious PURE HOME line impresses not only with the unique fragrances, but also with the extremely stylish design. We chose the most beautiful fragrance compositions that will enable you to create an amazing scented home ritual to pamper the senses of your family and enchant all of your guests too.

Directions: Open the flask and insert the grass reed. After soaking, the reeds will gradually release the smell of perfume.

En home ritual fragrance is a unique combination of precious scent compositions and stylish design. They will enable you to have an exceptional scented home ritual that will cherish your senses and will take you to the magical world that smells perfection.

HOME RITUAL Fragrance Candle

HOME RITUAL FRAGRANCE CANDLE

With a captivating scent and the highest quality standard. It introduces a sensual mood to the room, at the same time being an appealing decoration for any interior. Contains paraffin produced in a modern, hydrotreating process that meets the strict requirements of the German RAL standards.

- **burn time: 35 to 40 hours**
- **immersed in an elegant glass**
- **with timeless PURE perfumes**

150 g

FOR HER:
719018 | PURE 18 |
719020 | PURE 20 |
719413 | PURE 413 |

FOR HIM:
719472 | PURE 472 |

NEW FRAGRANCES

FOR HER:
PURE 32 | **719816**

Sweet, fresh and fruity – in that way PURE 32 candle can be described. Enchant your interiors and surprise guests with incredible and unforgettable scent.

PURE 33 | **719817**

Amazing and unique mix of fresh fruits, bamboo and flowers that refreshes your room in one PURE 33 candle. Create vivacious aura in your interior.

PURE 489 | **719815**

Imagine ideal proportions of flowery and oriental scents in one candle. PURE 489 candle takes futuristic composition to another level of extravagance.

FOR HIM:
PURE 473 | **719818**

Looking for fresh scent with lavender, but rebellious at the same time? PURE 473 candle is for you. Make your space bright, intriguing and discover its perfectness on daily basis.



HOW TO PROPERLY LIGHT THE CANDLE

Before each lighting, cut the wick to a height of about 5 mm, so that the flame will be stable and the candle will not smoke. Burn it for 3 to 4 hours – this will prevent tunnelling (the wax will melt evenly), and will also allow the candle to develop a full bouquet of aromas.

THE HIGHEST QUALITY STANDARD

Home Ritual scented candles meet strict requirements of the German RAL standard in terms of:

- **scent intensity**
- **optimal burning behaviour**
- **wick quality – a strong cotton wick of suitable thickness, resistant to breaking and drowning**
- **minimal smouldering, which does not pollute the airways**
- **reduced soot, which ensures the candle looks beautiful when used**

Home Ritual MELT WAX

HOME RITUAL MELT WAX

EN HOME RITUAL SCENTED WAX MELTS fill the interior of your home with a beautiful scent. Thanks to the unique fragrance compositions, it makes it even more enjoyable to spend time at home. The wax melts are made of eco-friendly raw materials of the highest quality and are not only good for your household members, but also for the environment.

75 g

- 1** MELT WAX 472
719844 |
- 2** MELT WAX 18
719842 |
- 3** MELT WAX 413
719843 |

NEW



1



2



3





Air FRESHENER

AIR FRESHENER

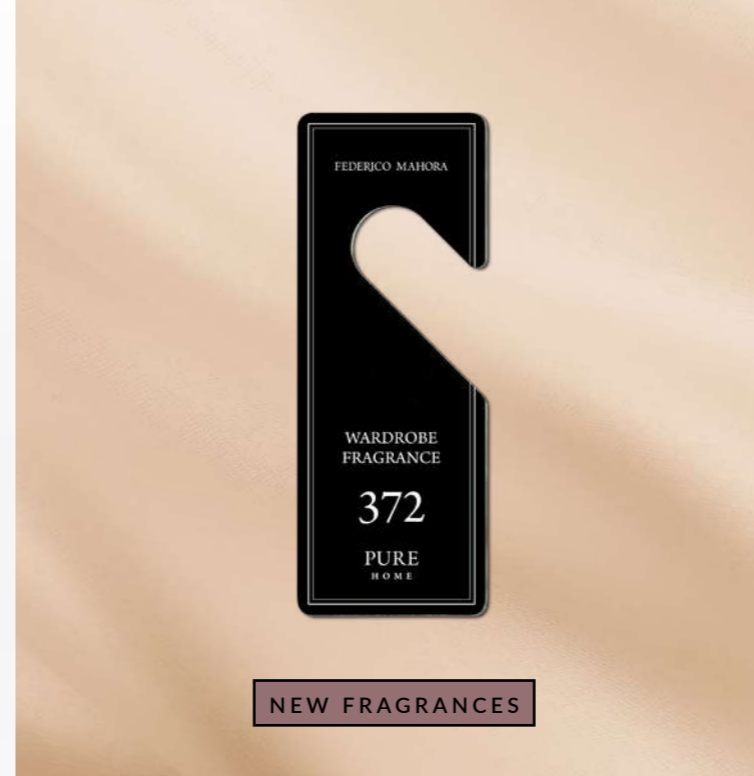
The original fragrance composition smells as beautiful as your favourite PURE perfumes. Gradually releases a distinct fragrance.

- with a convenient elastic band to hang
- ideal for various interiors, e.g. home, office or car

9,5 g, 10,5 g

FOR HER:
708041 | PURE 18 |
708039 | PURE 20 |
708086 | PURE 372 |
708087 | PURE 436 |
708058 | PURE 489 |

FOR HIM:
708088 | PURE 473 |
708040 | PURE 472 |



NEW FRAGRANCES

Wardrobe FRAGRANCE

WARDROBE FRAGRANCE

Unique perfume compositions in your wardrobe, bedroom and office.

- gradually release the scent

14,2 g, 15,2 g

FOR HER:
708041 | PURE 18 |
708039 | PURE 20 |
708018 | PURE 23 |
708019 | PURE 33 |
708064 | PURE 372 |
708036 | PURE 413 |
708044 | PURE 436 |
708058 | PURE 489 |

FOR HIM:
708040 | PURE 472 |
708042 | PURE 473 |



Perfumed Ironing LIQUID

PERFUMED IRONING LIQUID

Makes ironing a real pleasure. Just pour about 5 ml of perfumed ironing liquid in the iron to make the clothes smell amazing. It comes in 3 captivating fragrances.

- gives the clothes a unique scent

100 ml

704015 | PURE 10 |
704016 | PURE 23 |
704017 | PURE 81 |



FEDERICO MAHORA

**Personal care products tailored
to your needs**

Your skin requires special attention due to stress, air pollution and the changing climate. The fast pace of life makes it easy for us to neglect it. That is why we have developed care products which, thanks to the carefully selected and concentrated ingredients, will nourish and regenerate your skin every day. It will become radiant and healthy like after the best spa treatments. The wide range of our products will ensure comprehensive skincare that will not only soothe your body but also be a true pleasure and relaxation for you.

Anti-Ageing Face SCRUB

ANTI-AGEING FACE SCRUB

It effectively cleanses and refreshes the skin, leaving it smoother and gently brighter. Due to corundum crystals, it thoroughly exfoliates the calloused epidermis, ensuring the effect of cosmetic microdermabrasion.

- with liquorice which beautifully evens out the skin tone and has antioxidant properties, slowing down the skin's ageing process
- enriched by soothing, moisturising and regenerating active components
- perfectly prepares the skin for further care
- recommended for every skin type, especially for dry and mature skin

50 ml | 512007 |



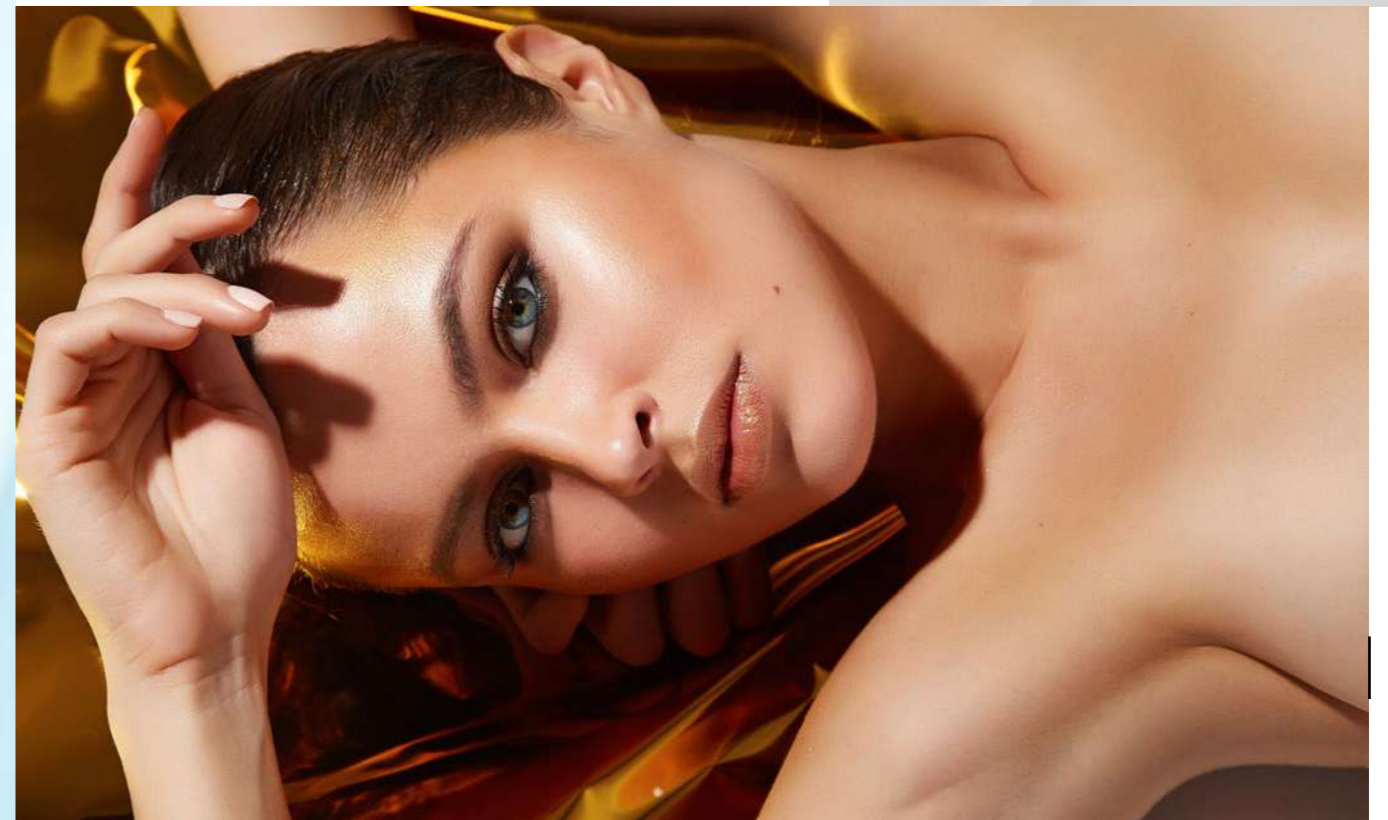
Shimmering Body OIL

SHIMMERING BODY OIL

It makes the skin look more radiant, silky-soft and long-lastingly moisturised. Grapeseed oil smooths, regenerates and nourishes the skin, and along with vitamin E, it slows down the ageing process. Sweet almond oil improves its flexibility, preventing the occurrence of stretch marks. Sunflower oil strengthens the lipid barrier and shows normalising properties.

- thanks to gold particles beautifully highlights the skin tone
- contains a valuable cocktail of rejuvenating components
- quickly absorbed by the skin without leaving an oily layer on it
- perfect for every skin type

100 ml | 512006 |





Anti-Ageing Day CREAM

ANTI-AGEING DAY CREAM

Contains illuminating colloidal gold and resveratrol from red grapes, which stimulates collagen and elastin production taking care of proper skin tension.

- **rescue for skin that needs tightening**
- **perfectly smoothes and restores skin elasticity**
- **contains nourishing shea butter and moisturising hyaluronic acid**
- **ceramide-enriched complex increases skin's natural resistance**

50 ml | 512003 |



Anti-Ageing Night CREAM

ANTI-AGEING NIGHT CREAM

Developed for skin renewal during sleep, when cells divide and regenerate more intensively. Thanks to the formula rich in jojoba, argan, rose and coconut oils and the ceramide complex, it deeply nourishes the skin, restoring its natural shine.

- **perfectly smoothes and tightens the skin, fighting signs of ageing**
- **with resveratrol from red grapes of strong antioxidant properties**
- **niacinamide-enriched, reduces skin roughness, evens out its tone and improves its protective barrier functions**

50 ml | 512004 |

COMPREHENSIVE SKIN CARE

FOR BETTER RESULTS USE ALL FOUR PRODUCTS



Anti-Ageing Eye CREAM

ANTI-AGEING EYE CREAM

Contains valuable biomimetic peptide complex – hexapeptide-8 that smoothes existing smile lines and effectively inhibits the formation of new ones thanks to dermo relaxing properties, and tetrapeptide-5 reduces the appearance of unattractive dark under-eye circles and puffiness around the eyes.

- **restores firmness, elasticity and smoothness to the delicate skin around the eyes**
- **fight signs of ageing and fatigue**
- **contains bisabolol from chamomile of regenerating and soothing properties**
- **for morning and evening applications**

20 ml | 512002 |



Anti-Ageing Gel TONER

ANTI-AGEING GEL TONER

Restores optimal pH value of skin, ideally preparing it for application of other cosmetics. Contains perfectly soothing rosewater and excellent moisturising hyaluronic acid.

- **with a mild, alcohol-free formula**
- **thanks to the unique gel consistency, it's perfectly absorbed**
- **non-sticky formula does not leave an unpleasant feeling of skin tightening**
- **refreshes and smoothes the skin**

150 ml | 512001 |

COLLOIDAL GOLD

ALLY IN THE FIGHT AGAINST THE EFFECTS OF TIME

- **reduces existing wrinkles and prevents the formation of new ones**
- **stimulates collagen and elastin synthesis taking care of proper skin tension and elasticity**
- **affects optimal skin hydration facilitates the penetration of active ingredients into deeper layers**
- **stimulates the exchange of microelements inside the skin contributing to its intensive nutrition**
- **restores your skin's natural glow and vitality**
- **activates skin's natural immune system increasing resistance to the harmful effects of external factors**



Regenerating & Nourishing Hand CREAM

REGENERATING & NOURISHING HAND CREAM

Created to answer the needs of dry, damaged skin of hands exposed to harmful external factors. Intensively nourishes, smoothes the skin of hands and improves the condition of nails giving them a healthy and well-groomed look.

- formula based on beta-glucan, rice oil, castor oil, allantoin

50 ml | 513007 |



Face SERUM

FACE SERUM

Recommended for regular use instead of cream, especially in the morning and evening, as well as topically on areas of the face and body that require special treatment.

- innovative, intensively acting cosmetic
- recommended for sensitive, tired and dry skin
- for every skin type

30 ml | 513002 |



3 in 1 Facial CLEANSER

3 IN 1 FACIAL CLEANSER

Exceptionally light formula with a light texture. It perfectly removes even waterproof makeup. Effectively removes dirt, and tones the skin leaving your face smooth and nourished.

- the power of ingredients: oat beta-glucan, panthenol, sweet almond oil, vitamin E, witch hazel hydrolat, rose water from damask rose
- does not require rinsing

200 ml | 513001 |



Moisturising Body BALM

MOISTURISING BODY BALM

Moisturises and nourishes the skin giving it firmness and elasticity.

- with triglycerides of caprylic and capric acid, which strengthen the skin's lipid barrier, gently nourish and prevent water loss
- for every skin type

300 ml | 513008 |



Anticellulite Body BALM

ANTICELLULITE BODY BALM

Contains a unique Anticellulite Forte complex that shapes the body and strengthens tissues. If used regularly, it gradually reduces the effect of the so-called 'orange-peel' skin.

- visibly shapes thighs, hips, buttocks and abdominal areas
- with the *Centella Asiatica* extract, which stimulates the production of collagen and elastin restoring skin's proper density and elasticity and preventing the formation of stretch marks

300 ml | 513009 |

EFFECTIVENESS OF β-GLUCAN

CONFIRMED BY NUMEROUS STUDIES

- provides the skin with optimum moisture
- stimulates collagen production and so it has rejuvenating and anti-ageing properties
- regenerates dry skin, soothes irritations, facilitates the healing processes
- tightens and makes the skin more elastic, firmer and smoother
- it is a natural factor protecting against UV radiation

NECTAR

Body Wash

NECTAR BODY WASH

Soft and fragrant skin thanks to a gentle fluid with a delicate, oily consistency. The Nectar cleanses and nourishes the body.

- with honey extract, lactic acid and allantoin which perfectly moisturise the body
- with extract of opuntia, pear and Passiflora

220 ml | 515005 |



Sugar Body SCRUB

SUGAR BODY SCRUB

Thoroughly cleanses, smoothes and intensively nourishes the skin. Restores its softness and elasticity.

- with argan oil, which protects the skin from drying out and delays the ageing processes
- with sweet almond oil of strengthening properties, rich in magnesium, potassium, zinc and vitamins: E, PP and B complex

150 ml | 515003 |



Body PUDDING

BODY PUDDING

Long-lasting and intense moisturisation as well as satin-like softness. Wonderfully fragrant butter with an exceptionally fluffy texture. It spreads pleasantly and absorbs quickly.

- with sweet almond oil and honey extract, which provide perfect moisturisation
- with shea butter, which nourishes the skin

130 ml | 515004 |

LIQUID HONEY CARE

Thanks to its moisturizing and regenerating properties, honey is perfect for dry and dehydrated skin, nourishing it and making it more elastic and radiant. In addition, honey makes skin less prone to irritation and resistant to the negative influence of external factors.

Natural Sugar BODY SCRUB

NATURAL SUGAR
BODY SCRUB

Honey gives a dose of vitamins and oils to skin that lacks radiance. Thanks to vitamin E and soya as well as sunflower oil, it has anti-ageing properties. It contains shea butter which perfectly regenerates the damaged epidermis and protects it against harmful external factors.

- cleanses, brightens and rejuvenates the skin
- with almond oil preventing the occurrence of stretch marks
- to be applied 1-2 times a week

200 ml | 515006 |



Natural BODY PUDDING

NATURAL BODY PUDDING

Daily cocktail of components for a younger look. It contains lychee, coconut oil and caffeine, slowing down the skin ageing process as well as regenerating-lubricating shea butter. Thanks to allantoin and panthenol, it softens and soothes irritations, speeding up its regeneration.

- moisturises and makes the skin more flexible, restoring its youthful look
- with avocado oil that improves its tightness
- to be applied in the morning and in the evening

200 ml | 515007 |



HONEY KING

Manuka honey is said to be the healthiest honey in the world – no wonder as it is a true richness of vitamins, minerals, sugars and flavonoids that benefit both the internal body and skin – moisturising, smoothing, soothing and revitalising it. It is unique not only due to its properties, but also due to the manner of obtaining it. This precious component is found in the nectar and pollen of flowers of tea trees growing solely in New Zealand.



Facial CREAM

FACIAL CREAM

Perfect for everyday skin care thanks to its natural ingredients: aloe vera juice soothes irritation, stimulates regeneration and collagen synthesis; sugar betaine smoothes the skin, while macadamia oil and glycerine soften it and provide long-lasting hydration.

- contains sweet almond oil and vitamin E to slow down the ageing process
- with bioactive shea butter extract to reinforce its protective barrier
- for morning and evening use
- suitable as a make-up base
- for all skin types, including dry and sensitive skin

50 ml | 514011 |



Multifunctional GEL

MULTIFUNCTIONAL GEL

Contains nearly 100% of its moisturising and revitalising Aloe Vera from organic plantations in Mexico, as well as soothing allantoin and panthenol. It is easily absorbed and leaves no oily film.

- perfect for face, body and hair
- for all skin types
- a must-have in every bag
- with a pleasant, fresh fragrance
- suitable for vegans

200 ml | 514010 |



99% ALOE



A MINE OF VITAMINS AND MINERALS

Aloe Vera is a mine of vitamins A, B, C and E and minerals such as zinc, selenium or copper. No wonder, then, that it has been used in the medical and cosmetic worlds for ages.

BODY LOTION
nourishes and firms

FOOT AND HAND EMULSION
reduces dryness and protects

AFTER SUN
soothes and regenerates

**ONE PRODUCT,
MULTIPLE FUNCTIONS**

FACE SERUM
smoothes and brightens

AFTER-SHAVE CREAM
soothes irritations and redness

HAIR MASK
intensively moisturises



Facial Cleansing
FOAM

FACIAL CLEANSING FOAM

Gentle but effective and rich in moisturising ingredients. Removes makeup and dirt, leaving your skin feeling refreshed and soothed.

- **very efficient (one pump = cleanse whole face)**
- **ideal for everyday care**

150 ml | **514009** |



Facial
TONER

FACIAL TONER

Restores the right pH value of the skin and provides the proper level of moisture. In the form of a delicate mist.

- **with a convenient atomiser**
- **alcohol-free**

150 ml | **514003** |



Facial
GEL-CREAM

FACIAL GEL-CREAM

Quickly absorbed. Intensely moisturises, nourishes and soothes the skin. It provides a velvety softness and a fresh healthy look.

- **an exceptionally light formula**
- **perfect to wear under makeup**

50 ml | **514008** |

Enzymatic Facial
PEELING

ENZYMATIC
FACIAL PEELING

A perfect alternative to traditional manual scrubs. It cleanses and smooths the skin, making it refreshed and glowing. It contains a pineapple extract, rich in bromelain – an enzyme that exfoliates dead cells and evens out the skin tone.

- **regenerates and soothes thanks to containing aloe and allantoin**
- **with glycerine that ensures the right level of nutrition**
- **perfect for every skin type, also for dry and dehydrated skin**

50 ml | **514006** |





Rich Revitalizing Facial MASK

RICH REVITALIZING FACIAL MASK

It makes the complexion smooth and elastic, regains its glow and fresh look. This face mask contains aloe, hyaluronic acid and glycerine, which ensure long-lasting hydration and slows down the ageing process.

- **creamy consistency**
- **contains blueberry and blackcurrant extracts, which provide a firming and elasticising effect**
- **with avocado oil and shea butter, which nourish the skin and strengthen its hydrolipid layer**
- **perfect for all types of skin, especially for dry and dehydrated skin**

50 ml | 514007 |



Peel-Off Facial MASK

PEEL-OFF FACIAL MASK

Gently exfoliates dead skin, perfectly cleanses and tightens pores. It prevents shininess and provides softness, elasticity and the feeling of pleasant refreshment.

- **with soothing jasmine extract and Enantia chlorantha tree bark extract that regulates sebum secretion**
- **for normal, combination and oily skin**

50 ml | 514002 |

Intimate Hygiene WASH

INTIMATE HYGIENE WASH

Gently cleanses and provides a sense of purity and freshness. Strengthens the natural protective barrier and restores its proper pH.

- **soothes irritation, moisturises and reduces the risk of infection**
- **with a hygienic pump**

200 ml | 514005 |



NEW

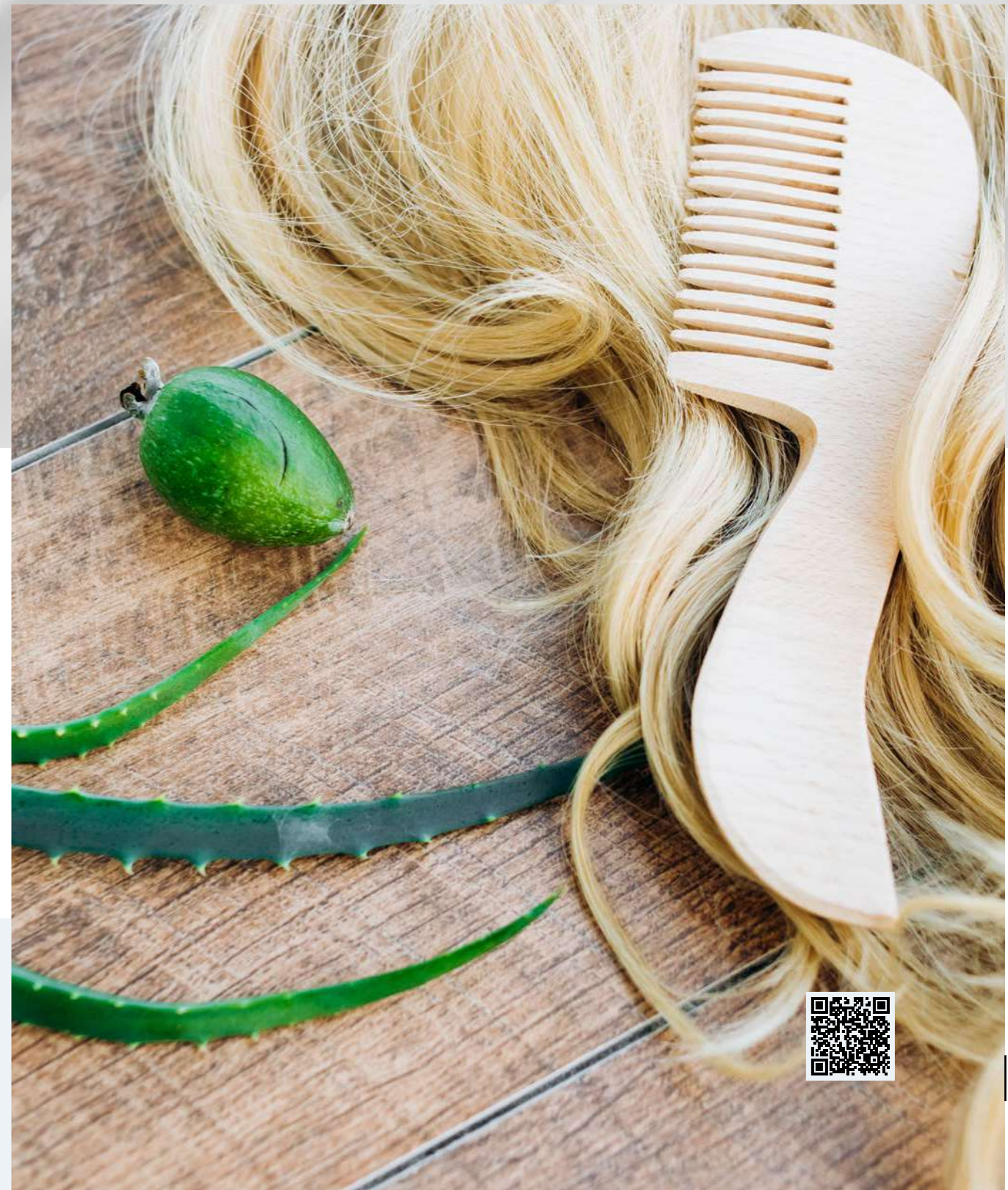


HAIR MASK

HAIR MASK

This hair mask nourishes, strengthens, and protects your hair, leaving it smooth, shiny, and soft to the touch. Contains aloe vera juice sourced from organic plantations in Mexico, as well as oat proteins, which moisturise and regenerate your hair and make combing easier. It has a lightweight formula and a crisp, pleasant fragrance.

200 ml | 514012 |



CONTAINS ALOE JUICE FROM ORGANIC PLANTATIONS



Cleansing Antibacterial HAND GEL

CLEANSING ANTIBACTERIAL HAND GEL

Prevents the spread of bacteria on hands' surface, helping to protect it. It contains aloe extract, as well as panthenol, which has a caring effect.

- cleans the hands without using water
- ideal for outdoor – for travel, work or a walk

50 ml | 501022 |

SOAP BAR

SOAP BAR

Perfectly foaming and thoroughly cleansing the entire body. Contains valuable avocado oil rich in vitamins, unsaturated fatty acids and amino acids.

- with a pleasant, delicate fragrance
- with moisturising glycerine and nourishing shea butter
- with olive oil that makes the skin silky soft and smooth
- does not contain colourants

100 g | 501021 |

Complete Care SHOWER GEL

COMPLETE CARE SHOWER GEL

Perfectly cleanses the skin leaving the feeling of softness. For all skin types, even for children from 3 years of age. Contains almond oil, which prevents the skin from lack of moisture and intensively moisturises and smoothes the skin.

- creates a delicate foam and contains gentle washing ingredients
- with panthenol and allantoin of soothing properties

250 ml | 501002 |

Complete Care CREAM

COMPLETE CARE CREAM

With its light, delicate formula, it is also suitable for sensitive skin and children from 3 years of age. Leaves a delicate protective film. With ingredients that optimally hydrate and smooth the skin of the face, body and hands.

- contains coconut and avocado oils which strengthen the skin's protective barrier
- with panthenol and allantoin, which soothe and have anti-inflammatory properties
- with a complex of vitamins C and E, which slows down the ageing process

30 ml | 501001 |

Deeply Moisturizing BODY LOTION

DEEPLY MOISTURIZING BODY LOTION

The rich formula contains, among others, almond oil, coconut oil, panthenol, allantoin and bisabolol, makes the skin deeply moisturised, nourished and increases its elasticity. Perfectly smoothes rough and dry skin, making it soft and silky.

- thanks to a carefully selected formula, it subtly oils the skin, providing with the immediate feeling of comfort and moisture
- has a soothing and relieving effect, protects the skin from drying out

250 ml | 501003 |



SOOTHING FACE SERUM

Complete Care

SOOTHING FACE SERUM
COMPLETE CARE

Soothing facial serum helps prevent the negative effects of frequent wearing of protective face masks, soothing the skin and reducing imperfections. It contains an innovative biomimetic lipopeptide, organic Centella Asiatica extract to effectively relieve inflammation, and the natural prebiotic Biolin P, which restores the skin's balance and immunity. Grape seed oil and vitamin E strengthen the skin's lipid layer, nourishing and smoothing the skin while leaving it more pliable. Propanediol, trehalose, and squalane provide intensive moisturisation. Additionally, niacinamide reduces the formation of acne breakouts and brightens the complexion

40 ml | 501026 |



NEW

INSTANT SANITISER SPRAY

Discover amazingly moisturising Instant Sanitiser Spray with aloe vera and vitamin E. Not only it provides hygiene for your skin but also moisturisation and refreshment.

- quick-drying formula, no sticky residue
- effectively disinfect everyday items and sports equipment
- protective face masks

Instruction of use: spray an object from a distance of 15-20 cm and wipe off after a few seconds.

100 ml | 501027 |



NEW



Regenerating HAND SERUM

REGENERATING HAND SERUM

Thanks to its rich, concentrated formula it provides excellent care for your hands. It contains aloe vera juice, shea butter, olive oil, glycerine and allantoin, which fantastically moisturise and nourish the skin, visibly improving its condition.

- **rescue for damaged and dry hands**
- **absorbs quickly without leaving a oily film**
- **effectively soothes the skin after hand disinfection with alcohol products**
- **dermatologically tested**

100 ml | 501025 |



Smoothing HAND PEELING

SMOOTHING HAND PEELING

Give your hands' skin smoothing therapy that will make it incredibly soft, hydrated and more elastic. Thanks to volcanic pearlite and powdered walnut shell the exfoliator gently removes dead cells' stimulating their restoration.

- **perfectly smooths even the driest and most chapped hands**
- **is an ideal preparation of the skin for further phases of the skincare routine**
- **with panthenol, allantoin and triglyceride of calming properties**

100 ml | 501005 |

Nourishing HAND CREAM

NOURISHING HAND CREAM

Due to its rich formula, this cream visibly improves the condition of the hands. The synergistic combination of urea and glycerine provides intensive and long-lasting hydration. Moreover, it contains sweet almond oil and shea butter, which have exceptional nourishing, regenerating and oiling properties.

- **easily spread**
- **with panthenol and allantoin that soothe the chapped skin**
- **leaves a delicate protective film that prevents drying of the skin**

100 ml | 501004 |



Exfoliating FOOT PEEL

EXFOLIATING FOOT MASK

Thanks to AHA/BHA acids perfectly regenerates damaged epidermis, and a rich complex of natural ingredients, urea and allantoin additionally moisturises and rebuilds the skin. Thanks to a special formula, it adjusts the intensity of the treatment to the individual needs of the skin.

- effectively removes calluses
- contains extracts of honey, opuntia, pear, passion fruit, lemon, grape and pineapple
- leaves feet perfectly smooth
- use once a month

2 x 20 ml | 501024 |



Refreshing ANTIPERSPIRANT FOOT SPRAY

REFRESHING ANTIPERSPIRANT FOOT SPRAY

Developed on the basis of refreshing lemongrass oil. It helps take care of the skin that is exposed to bacteria and fungi. Excellent for everyday use.

- reduces perspiration
- prevents an unpleasant aroma
- ensures a long-lasting feeling of freshness
- does not contain alcohol

150 ml | 501019 |



Ultra Moisturizing FOOT CREAM

ULTRA MOISTURIZING FOOT CREAM

It strongly moisturises even very dry feet. Thanks to its softening and smoothing ingredients, it is a perfect ally in your skincare routine for cracked heels. If used systematically, it reduces the thickened epidermis.

- with a high urea content
- with nourishing beeswax, shea butter and macadamia oil
- makes feet soft and supple again

75 ml | 501020 |

ULTRA MOISTURISING TREATMENT

Urea is one of the key ingredients of the NMF – natural moisturising factor in the skin – and an excellent humectant, i.e. a water-retaining substance, the content of which decreases with age in the human body. A high, ten percent concentration of urea also has keratolytic effects – it facilitates the exfoliation of the calloused layer of the skin by softening and smoothing it, and improves its permeability, which enables the better absorption of other active substances contained in the product. You can walk through life with confidence with such moisturised and smooth feet.

Softening FOOT SCRUB

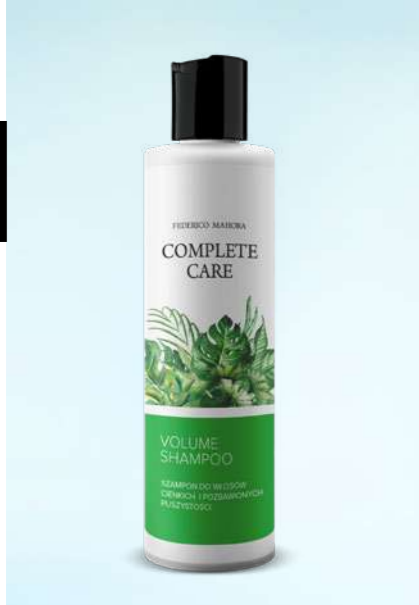
SOFTENING FOOT SCRUB

It effectively removes calloused skin. Thanks to the content of allantoin and glycerine, it visibly smooths and softens rough and dry feet. Shea butter and vitamin E, with their moisturising qualities, will give your feet a healthy look.

- developed from exfoliating, natural granules from apricot pits, walnut and almond shells
- with a refreshing and relaxing wild water mint extract

75 ml | 501017 |





Volume SHAMPOO

VOLUME SHAMPOO

Gives bounciness to your hair and optically increases its volume. The carefully selected ingredients include, among others, panthenol, which improves hair hydration, and a wheat protein derivative – an ingredient providing softness.

- **valuable plant extracts cleanse and soothe the scalp**
- **active ingredients prevent your hair from picking up static, make it easy to comb and add exceptional lightness**

230 ml | 501010 |



Colored Hair SHAMPOO

COLORED HAIR SHAMPOO

Intense and deep colour for an incredibly long time. This shampoo perfectly nourishes your hair simultaneously preventing it from getting dry. It contains a ginkgo biloba extract, which strengthens your hair, and a UV filter, which helps protect it from the negative effects of sun radiation including the fading of the hair colour.

- **makes your hair shiny and healthy looking**
- **thanks to milk proteins your hair is incredibly soft to the touch and easy to style**

230 ml | 501013 |



Men's SHAMPOO

MEN'S SHAMPOO

Designed for everyday care of men's scalp and hair. It contains keratin, which strengthens and restores hair structure, and silk, which creates a thin film on its surface protecting the hair from the harmful effects of external factors.

- **ingredients such as panthenol and argan oil, which is rich in vitamin E, prevent the hair from getting dry and provide it with excellent nourishment**

230 ml | 501011 |



Dry And Damaged Hair SHAMPOO

DRY AND DAMAGED HAIR SHAMPOO

It is dedicated to hair that requires intensive regeneration. Meticulously selected ingredients such as aloe vera juice, glycerine and sodium hyaluronate excellently hydrate your hair. A specially developed formula makes it easy to comb your hair and prevents it from picking up static and breaking.

- **quick and intensive regeneration of hair damaged by colouring, blow-drying or straightening**
- **a unique combination of active ingredients makes your hair incredibly soft, smooth and more flexible**

230 ml | 501012 |



Dry And Damaged Hair CONDITIONER

DRY AND DAMAGED HAIR CONDITIONER

A unique formula helps regenerate even the most damaged hair, giving it a beautiful, healthy look. Thanks to its creamy formula, rich in active ingredients such as panthenol or sodium hyaluronate, it deeply hydrates and regenerates your hair protecting it from getting dry.

- **highly valuable shea butter intensively nourishes your hair, making it smooth and shiny**
- **requires rinsing**
- **for better results we recommend using it with the Dry and Damaged Hair Shampoo**

180 ml | 501015 |

Sensitive TOOTHPASTE

SENSITIVE TOOTHPASTE

Reduces the discomfort associated with exposed dentin tubules. It is a perfect solution for the issue of sensitive teeth and gums.

- reduces the discomfort experienced during eating and drinking
- the delicate toothpaste formula protects sensitive teeth, additionally helping maintain strong gums
- designed for adults

75 ml | 501006 |



EFFECTIVELY REDUCES DISCOMFORT DURING THE CONSUMPTION OF HOT AND COLD FOOD

Whitening TOOTHPASTE

WHITENING TOOTHPASTE

Dazzle others with your beautiful, radiant smile. Thanks to the perfectly selected active ingredients, after just two weeks of use, the toothpaste ensures a visible effect of restored natural whiteness of the teeth.

- removes discolouration caused by some types of food products – such as coffee or tea – and smoking
- a rich formula consisting of, among others, sodium fluoride which effectively mineralises tooth enamel, making it stronger and reduces the risk of decay
- designed for adults

75 ml | 501008 |



RESTORES NATURAL WHITENESS OF THE TEETH AFTER JUST TWO WEEKS OF USE

TOOTHPASTE Gums Protection

GUMS PROTECTION TOOTHPASTE

Thanks to a specialised formula developed by experts, it ensures comprehensive aid for people dealing with the problem of sensitive gums.

- triple action: it soothes irritated gums, regenerates them and protects them from micro-damage
- provides excellent periodontal preventive care
- designed for adults

75 ml | 501007 |



3 IN 1 TRIPLE ACTION FOR STRONG GUMS: IT SOOTHES, REGENERATES AND PROTECTS

Mild Mint MOUTHWASH

MILD MINT MOUTHWASH

Thanks to its highly specialised formula, it is a perfect addition to your everyday oral cavity care routine. It effectively reaches places that are not easily accessible to a toothbrush, helping you take excellent care of your oral cavity. The mild mint flavour gives you the feeling of a clean mouth and fresh breath for a long time. It does not contain artificial colourants.

- prevents the formation of plaque – one of the key causes of decay, periodontitis and tartar
- ensures fresh breath for a long time
- does not contain alcohol
- designed for adults

500 ml | 501009 |

A UNIQUE TRANSPARENT FORMULA WITHOUT ARTIFICIAL COLOURANTS OR ALCOHOL





SHAVING FOAM

For Women

SHAVING FOAM FOR WOMEN

Created specifically for delicate, feminine skin. It leaves it soft and pleasant to the touch. Effectively softens hair ensuring precise and comfortable shaving.

- enriched with allantoin, which soothes and reduces the risk of redness
- ideal for legs and the sensitive armpit and bikini areas
- matches PURE Parfum 18

250 ml | 516018 |



AFTERSHAVE

AFTERSHAVE

Intensely fragrant aftershave that is a great finish to a perfect shave. Cooling menthol brings a pleasant refreshment and allantoin soothes irritated skin.

- with allantoin which soothes skin and eliminates the tight skin sensation

100 ml

AVAILABLE FRAGRANCES:
52 (509052) | 134 (509134)
199 (509199)

AFTERSHAVE BALSAM

AFTERSHAVE BALSAM

Contains ingredients that soothe and moisturise the skin on your face which is irritated after shaving, and gets easily absorbed, providing the feeling of comfort throughout the day.

- with nourishing macadamia oil
- with regenerating panthenol

50 ml

AVAILABLE FRAGRANCES:
52 (510052) | 134 (510134)
199 (510199)

SHAVING FOAM

SHAVING FOAM

The appropriate consistency of the creamy foam effectively softens your stubble making the shaving process easier. The formula, enriched with mint extract, pleasantly refreshes your facial skin.

- ensures a precise and comfortable shave
- with refreshing mint extract
- matches PURE Parfum 134

250 ml | 516134 |

A woman with dramatic makeup, including dark eye makeup and bright pink lipstick, is shown in profile. She has her hair styled in an updo and is wearing a bright red top. Her hand is resting near her chin. The background consists of black and white horizontal stripes. The overall aesthetic is bold and fashion-forward.

FEDERICO MAHORA
MAKEUP

Express yourself

Makeup has been known since antiquity. It plays many different roles corresponding to the changing nature of women. Sometimes it helps to highlight your beauty and add confidence, other times it is used to create a completely new image, matching your mood and the circumstances. Thanks to the fantastic Federico Mahora cosmetics, your makeup will be in line with the latest trends. Do not be afraid to experiment – play with colours and turn the makeup application routine into oodles of fun.

Colour visualisations of makeup cosmetics (products) are for reference only. Actual shades may slightly differ from those shown in the pictures. It depends on the light, print quality and monitor settings.

UV Neon Brights PALETTE

UV NEON BRIGHTS PALETTE

UV Neon Brights Palette is an incredibly tempting palette of body paints glowing under UV light. Create a festival makeup thanks to a special formula closed in 10 unique colors. Highly pigmented formulas will perfectly spread on the body, and the durability of color and intensity lasts for many hours. The variety of colors will allow you to create a unique characterization, adding a bit of madness to your makeup. UV Neon Brights Palette is a product made of environmentally friendly ingredients.

1,1 g x 10

1 PINK
606088 |

2 YELLOW
606087 |



1

NEW



2

NEW



NEON GLOW – FLUORESCENT FACE AND BODY PAINTS WITH A BRUSH

The color of ordinary pigments depends only on the reflected light, but neon fluorescent pigments combine the light emission phenomena caused by ultraviolet light and the stimulation of reflected visible light, respectively. It is possible to obtain vivid colors with high luminous effects, lightness and saturation. Highly concentrated colored powders emit visible or invisible light as a result of the action of short wavelength light. The pigmented surface must be exposed to a UV lamp or a diode with ultraviolet light to provide a special glowing effect. The most important feature of fluorescent colors is that they glow, are vivid and noticed much faster than regular colors.

VALUES

- This neon body paint is the perfect accessory to spice up parties, festivals, evenings, dressing up, going out with friends, clubs with UV light
- Each pack contains a rainbow selection of colors in various saturations and shades: red, orange, yellow, green, blue, purple, pink
- For adults, teenagers and children
- Color pigments reacting to UV rays are non-toxic and non-radioactive
- UV powders are made of substances that do not harm the environment or the health of the user (they can even be used by children)
- UV pigments do not lose their color properties and intensity over time. The pigments feature vivid color, strong fluorescent effects, good dispersity, and great particle fineness
- Easily removable with soap and water
- Excellent value for money as a little bit of paint goes a long way
- Content in the cup: ca 1,1 g

EASY TO USE

- Using circular motions, with the help of water and a brush, loosen the top layer of the color to obtain a smooth and homogeneous, creamy mixture
- 3. Apply multiple layers to skin for best glow under UV light
- Easy remove with soap and water

EFFECTS

Express clear and beautiful colors:

- In daylight – **neon colors**
- In the dark – **no glow**
- In the dark with UV light – **Vibrant + Bright + Neon UV Glow**

TIP

The paint is most commonly applied by fingers, but it can also be applied with brushes or sponges. No limits!

Glowing neon body paints are based on fluorescent pigments. They are powders in a finely divided state with a distinct color and fine particles. However, to obtain the luminous effect, the pigmented surface must be exposed to a UV lamp or a diode with ultraviolet light. Since most of the glow we see is actually reflected light, the brighter the background color, the brighter the glow appears. It is based on the emission of light waves through an excited molecule or atom, for which phosphors are responsible. Therefore, fluorescence is classified as photoluminescence. Light is only emitted when the pigment is exposed to the rays. When such rays stop being emitted, the effect disappears instantly. The color remains vivid, but without the glow effect.

NEW



Bamboo POWDER

BAMBOO POWDER

Bamboo Matte loose powder with a transparent formula provides a perfect finish. Effectively masks signs of fatigue and all imperfections. Bamboo shoot extract absorbs sebum, providing a long-lasting matte effect. With a puff or brush, apply to the entire face or to selected areas, such as the T-zone.

3,3 g | 602028 |

NEW



HD Effect Mineral POWDER

HD EFFECT MINERAL POWDER

HD Effect mineral powder Perfectly smoothes the skin and guarantees a perfect make-up finish. The transparent formula enriched with caring jojoba oil is suitable for all skin colors. With a puff or brush, apply over the entire face.

4,3 g | 602029 |

Bake It Setting POWDER

BAKE IT SETTING POWDER

Bake It fixing powder perfectly camouflages imperfections and provides a long-lasting velvety finish. It gently reflects light, making it ideal for contouring the face using the baking technique. The universal shade suits any skin color. With a puff or brush, apply to the entire face or apply a thick layer to the areas that need illumination. Leave for a few minutes, then remove the excess.

6,6 g | 602027 |



NEW

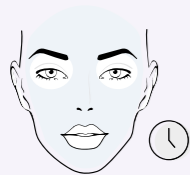


Mineral powder is a cosmetic that combines the power of minerals and vitamins. When applied to the skin, it turns into a beautiful, uniform surface. It is easy to apply and very efficient. Best in the fight against imperfections or excessive sebum production, leaving an elegant matte finish on the skin.



6 STEPS

to perfect skin



STEP 1
BASE

- extends the longevity of your makeup



STEP 2
FOUNDATION

- evens out your skin tone
- conditions your skin



STEP 3
CONCEALER

- hides the imperfections of your skin



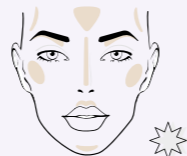
STEP 4
POWDER

- provides a matte finish
- sets your makeup



STEP 5
BRONZER

- sculpts the shape of your face



STEP 6
HIGHLIGHTER

- gives your skin a youthful glow

USE UNDER MAKEUP OR AS AN INDEPENDENT PRODUCT



Multifunctional **PRIMER** SPF 30

MULTIFUNCTIONAL PRIMER SPF 30

A creamy emulsion with beige shade gives the skin a beautiful, healthy look and gently evens skin tone. Perfectly smooths the complexion, while helping to protect against harmful effects of UV rays.

- exceptionally light formula
- does not accumulate in wrinkles, does not overload or dry the skin
- enriched with chamomile water, aloe vera and calendula extracts
- gluten-free
- beautiful fragrance

30 ml | 601312 |



IT MATTIFIES AND EVENS OUT IMPERFECTIONS

Silicone **BASE**

SILICONE BASE

Makes your makeup last longer. Mattifies and ensures a fresh look for a long time. Makes the skin perfectly smooth and ensures that pores and fine lines are less noticeable.

- with vitamin C and E complex which has antioxidant properties
- recommended for the skin which requires mattifying and has a tendency to shine

15 ml | 601301 |

FACE

IDEAL COVER EFFECT Foundation

IDEAL COVER EFFECT FOUNDATION

Provides a semi-matte finish and a perfect look, without the mask effect, for an unbelievably long time. Due to the light and silky consistency, it spreads evenly. It contains valuable B3 and E vitamins.

- **humidity-resistant**
- **covers all imperfections**
- **perfectly evens skin tone**
- **highly pigmented**
- **very efficient – a thin layer evenly covers and gently mattifies**

30 ml



NUDE
601105 |



SOFT BEIGE
601106 |



OLIVE BEIGE
601107 |



IDEAL FOR ALL SKIN TYPES

BLUR EFFECT Lifting Foundation

BLUR EFFECT LIFTING FOUNDATION

Superbly covers imperfections and evens out your skin tone. It guarantees a flawless, youthful and natural look without the mask effect. Thanks to its light, liquid consistency, it spreads very easily.

- **prevents shiny-looking skin**
- **gives a soft-focus effect**
- **creates an immediate visual lifting effect**
- **suitable for vegetarians**

30 ml



LIGHT NUDE
601204 |



CLASSIC BEIGE
601205 |



SATIN SAND
601206 |



PERFECT FOR MATURE SKIN

LONG-LASTING HUMIDITY-RESISTANT FORMULA

- perfect for hot days
- recommended for active people
- allows you to enjoy a perfect look even during a workout
- ideal for big events

THE BLUR EFFECT

Also referred to as the soft-focus effect, this is a well-known term in the field of photography. It allows to smooth out all the sharp contours and blur the image in the picture so that the model's face looks flawless and perfectly smooth. In the world of cosmetics, it offers strikingly similar results. Thanks to the ingredients with unique optical properties, it creates a layer on the surface of the skin which reflects and diffuses light evenly, masking the imperfections of your skin.

GLOWING DROPS 3D Liquid Highlighter

GLOWING DROPS 3D LIQUID HIGHLIGHTER

Immediately illuminates your skin and gives it an extra glow. Silky and liquid formula. It does not smudge and is not heavy on the skin.

- guarantees phenomenally fresh and radiant look
- optically rejuvenates the skin and eliminates signs of fatigue
- ideal for the strobing makeup technique
- with a formula containing wheat germ oil and betaine
- to be used in spots on various parts of your face and body
- can be applied both under the foundation, or add a drop to your favourite foundation and blend on your hand directly before the application
- with a pipette for easy dosing
- suitable for vegetarians

10 ml | 601311 |



HOW TO APPLY MAKEUP USING THE STROBING TECHNIQUE

It will illuminate your forehead

It will optically enlarge your eyes

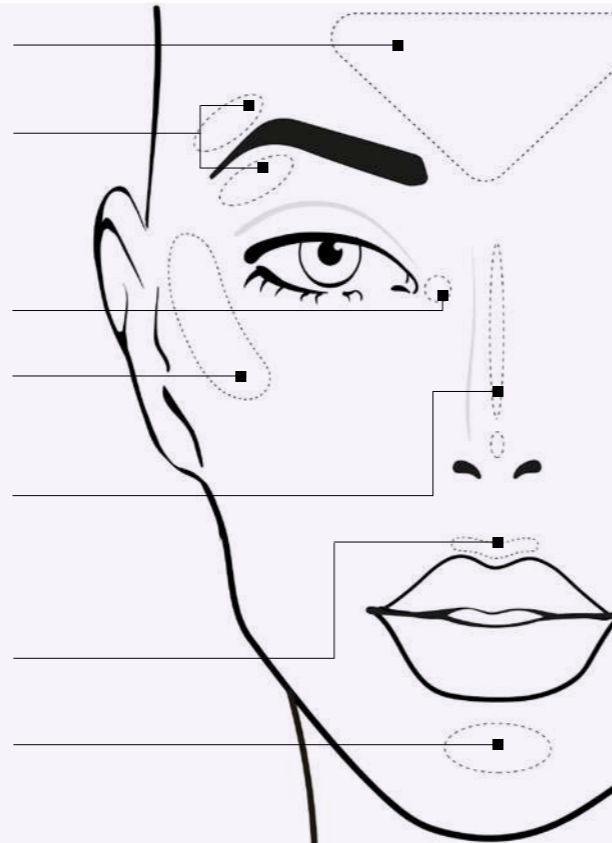
It will make your eyes look brighter

It will accentuate your cheekbones

It will make your nose appear smaller

It will make your lips look noticeably fuller

It will highlight your chin and enlarge the lower lip



Makeup Setting SPRAY

MAKE UP SETTING SPRAY

Creates an invisible coating to protect your makeup. Doesn't leave your skin feeling sticky or tight.

- refreshes and adds a healthy glow throughout the day
- in the form of light, moisturising mist

100 ml | 609003 |





Eyebrow POMADE

EYEBROW POMADE

Clearly emphasized eyebrows are the basis for a perfect make-up. With just a few brush strokes, you can conjure up shapely eyebrows in a perfectly matched shade. The satin formula of the pomade ensures easy application, matte finish and durability up to 12 hours.

2,5 g

1 DARK BROWN
607044 |

2 MEDIUM BROWN
607043 |

NEW



NEW



EYES

LONG-LASTING SPARKLE

Cream Eyeshadow

LONG-LASTING SPARKLE CREAM EYESHADOW

Leaves a captivating, intense shine on the eyelids. Thanks to the creamy-powder consistency, it is easy to apply and does not accumulate in skin creases.

- extremely efficient and durable, it lasts all day
- quickly adheres to the eyelids, giving them a stunning glow
- non-sticky formula does not flake off

3.5 g



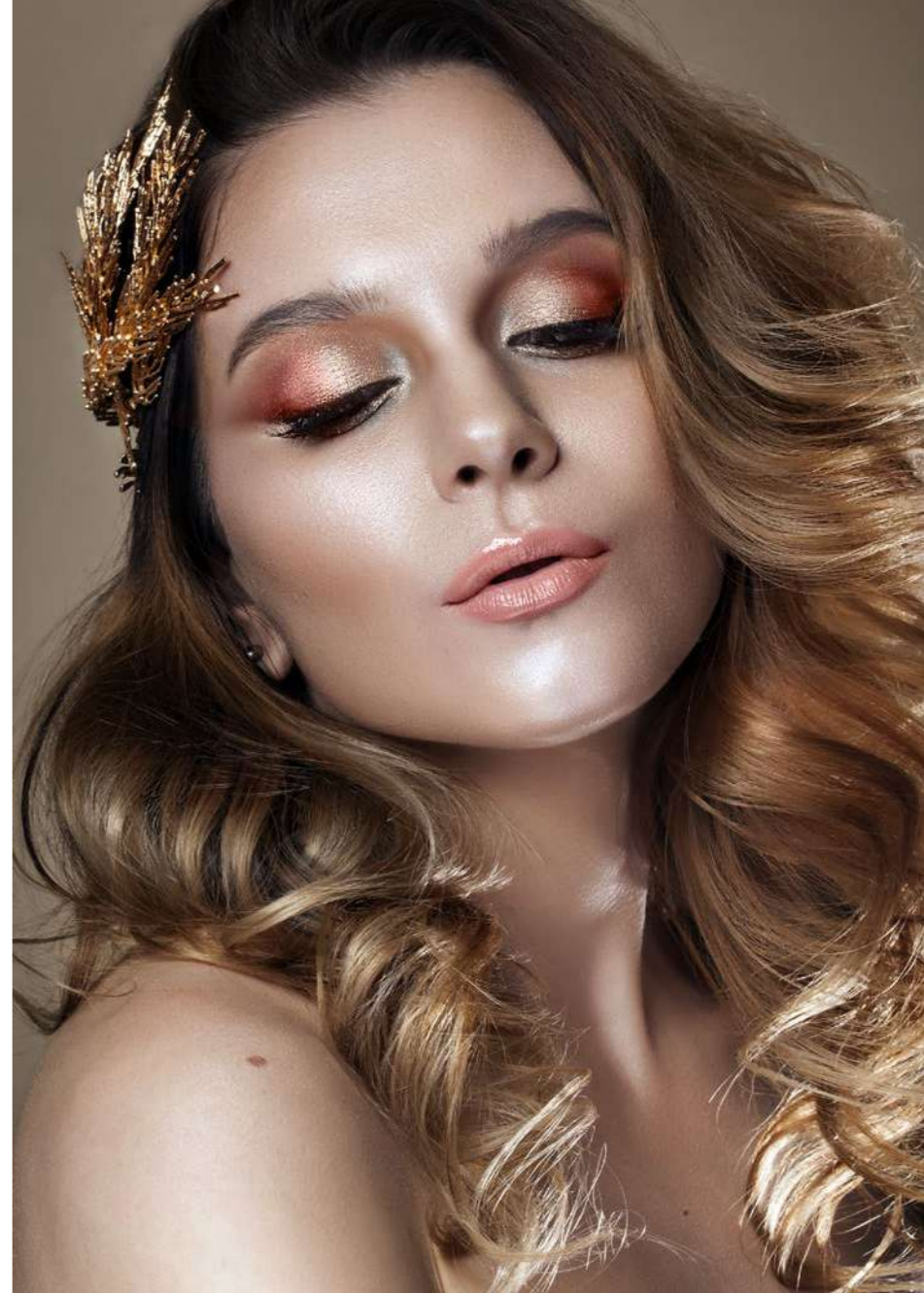
1 COPPER GRACE
606077 |



2 ICE PALACE
606075 |



3 GOLDEN TREASURE
606076 |



HAVE FUN WITH YOUR MAKEUP

Modify colour saturation by applying another layer.

ENJOY THE CONVENIENCE OF USE

Use your finger to apply a small amount of the shadow to your eyelid.

EYES

Long-Lasting KAJAL EYE PENCIL

LONG-LASTING KAJAL EYE PENCIL

Have a charming, deep and beautiful look. Apply the eye pencil along the waterline of your eye to optically enlarge and highlight it, reducing the signs of tiredness.

- long-lasting - up to 12 hours
- will optically enlarge your eyes and give your look a rested and fresh appearance
- it is exceptionally durable and has a non-smear formula
- with a convenient built-in sharpener
- ophthalmologist tested

0.33 g



1 ECRU IDEAL
607032 |



2 CLASSIC WHITE
607031 |



1

2

LONG-LASTING Automatic Eye Pencil

LONG-LASTING AUTOMATIC EYE PENCIL

Expressive eye makeup for an incredibly long time? Now it's possible. It can be used for both day and evening makeup. It draws thick and thin lines with great precision.

- stays on your face without getting smudged for up to 12 hours
- the soft and velvety texture makes the application super easy
- a functional, automatic mechanism of a built-in sharpener enables you to apply makeup quickly and with great precision
- a wide range of shades - you are sure to find something you like
- ophthalmologist tested

0.31 g



1 DECADENCE BLACK
607005 |



2 DARK BLUE
607004 |



3 OCEAN REFLECTION
607026 |



4 METALLIC TEAL
607028 |



5 VIOLET VELVET
607027 |



1

2

3

4

5





USE A BLENDING SPONGE INCLUDED TO CREATE SULTRY SMOKEY EYES



Automatic BROW PENCIL

AUTOMATIC BROW PENCIL

Emphasises the shape of eyebrows and makes them look thicker.

- guarantees a deep, long-lasting colour and a natural effect
- with a built-in sharpener

0.31 g



BISTRE
607012 |



AUBURN
607013 |

Diamond EYE PENCIL

DIAMOND EYE PENCIL

With diamond shine glitter that will add a glow to your look.

- glamorous
- waterproof

0.34 g | CRYSTAL BLACK | 607006 |



Bottled EYELINER

BOTTLED EYELINER

Intense blackness and incredible precision for expressive flirtatious eye makeup.

- a long-lasting effect, no need for touch-ups throughout the day
- ophthalmologically tested
- dermatologically tested
- suitable for vegans

4 g | DEEP BLACK
607001 |



Liquid EYELINER

LIQUID EYELINER

Beautifully emphasises the eye contour and gives intensity to the look by making eyelashes look denser.

- a great way for a quick, classy makeup
- perfect and easy application
- store in a vertical position with the tip downwards

1.1 ml | CARBON BLACK
607009 |



Volumizing Waterproof MASCARA

VOLUMIZING WATERPROOF MASCARA

Adds incredible volume to the lashes. Its perfectly profiled brush enables you to apply the mascara evenly from the roots to the tips, enhancing the volumising effect. The volatile silicone included in its formula makes the mascara extremely long-lasting. Bold, super-defined lashes in the blink of an eye.

- effectively protects your lashes from water and moisture
- suitable for vegans

8 ml | 607108 |



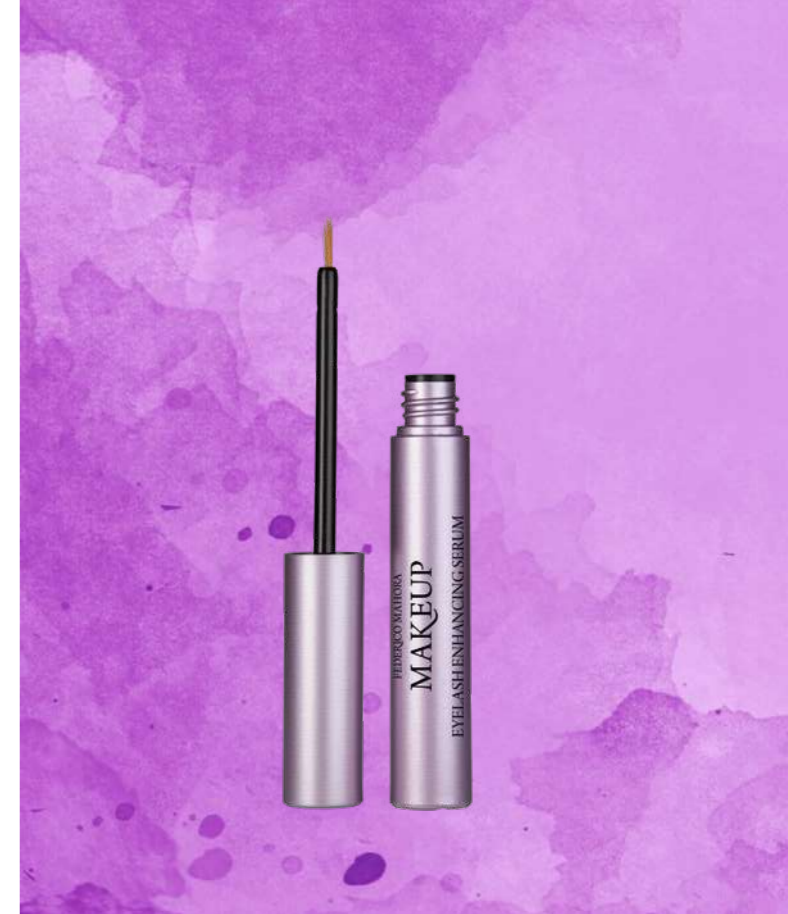
Eyelash Enhancing SERUM

EYELASH ENHANCING SERUM

The serum conditions eyelashes thanks to an active ingredient called: bimatoprost. It thickens and strengthens eyelashes and visibly improves their condition. The product may be used by people wearing contact lenses (remove the contact lenses before application of the serum). Can be used after chemotherapy, with eyelash extensions, with permanent makeup, and lashes after a henna treatment.

- makes eyelashes longer and thicker
- nourishes and regenerates even the weakest lashes

3 ml | 607107 |



LEGENDARY FULL HD LASHES Mascara

LEGENDARY FULL HD LASHES MASCARA

Thanks to its advanced formula, the mascara will make your eyelashes extremely thick, flirtatiously curly and maximally long. The specially designed wand will precisely separate and define each eyelash, even the shortest ones.

- perfectly lifted and optically denser eyelashes after the first application
- without clumps, smudges or flakes
- contains waxes that nourish the eyelashes improving their condition
- thanks to the walnut extract and the innovative hexapeptide-1, it gives a subtle effect of tinted eyelashes

13.5 ml | 607039 |



LASH EXPERT Mascara

LASH EXPERT MASCARA

Perfect eye makeup even for up to 12 hours, without smudging or crumbling.

- maximally lengthened and flirtatiously curled eyelashes
- an asymmetric, flexible wand: shapes and lifts the lashes with the longer bristles, and coats and separates even the tiniest lashes with the shorter bristles

11 ml | GLAM BLACK
607105 |



PHENOMENAL Mascara

PHENOMENAL MASCARA

Advanced formula and an ultraprecise wand guarantee a panoramic eyelash effect.

- with an innovative conditioning ingredient for longer and thicker lashes
- lengthened, thickened, perfectly separated and curled lashes
- flexible mini-wand perfectly emphasises even the shortest and most delicate lashes

10 ml | INTENSE BLACK
607104 |



3 STEP Mascara

3 STEP MASCARA

An innovative formula stunningly increases the volume of eyelashes and moisturises them properly.

- 3 in 1: extended, thickened, lifted eyelashes
- the exceptional shape of the wand allows for applying the mascara from roots to ends

8 ml | PERFECT BLACK
607103 |

LUSTRE EFFECT

Hyaluronic Lip Gloss

LUSTRE EFFECT HYALURONIC LIP GLOSS

Contains hyaluronic acid that perfectly moisturises the delicate skin of the lips, leaving it soft and smooth. Shiny, semi-transparent shades provide a natural effect, perfect for wearing every day and for special occasions.

- makes your lips look fuller and plumper
- makes them sensual and silky
- regular application improves lips condition
- with a convenient, soft applicator
- has a non-sticky formula and a pleasant scent

7 ml



UNICORN DUST
604036 |



CLASSY LADY
604037 |



RASPBERRY KISS
604038 |



WET-LOOK LIPS EFFECT

INSTANT FEELING
OF SMOOTHNESS

PLUMP EFFECT

Chili Lip Gloss

PLUMP EFFECT CHILI LIP GLOSS

Thanks to thousands of shimmering particles it visually plumps the lips making them incredibly alluring. Expressive, fashionable colours give your lips a seductive look and bring out your hidden sex appeal.

- with chilli pepper extract
- for temptingly full and sensuous lips
- with a convenient, soft applicator
- has a non-sticky formula and a pleasant smell

7 ml



VERY CHERRY
604039 |



CANDY FLOSS
604040 |



GOLDEN SHINE
604041 |



WET-LOOK LIPS EFFECT

DAZZLING REFLEXES



LIPLINER

Thanks to the creamy, waterproof formula it spreads perfectly and lasts incredibly long. High pigmentation provides precise coverage.

- perfect for shaping lips or as a lipstick
- long-lasting - up to 8 h without smudging or touching up
- provides a matte finish
- dermatologically tested

1.19 g

- 1 MIDNIGHT
607041 |
- 2 DAWN
607042 |
- 3 SUNRISE
607040 |

NEW





COLOR INTENSE

Lipstick

COLOR INTENSE LIPSTICK

Provides full coverage and intense matte colour. Applying it to your lips will be a moment of pure pleasure – thanks to the creamy consistency, it is very easy to apply too. Contains nourishing chia seed oil which prevents the lipstick from drying out your lips. They will look smooth and tempting.

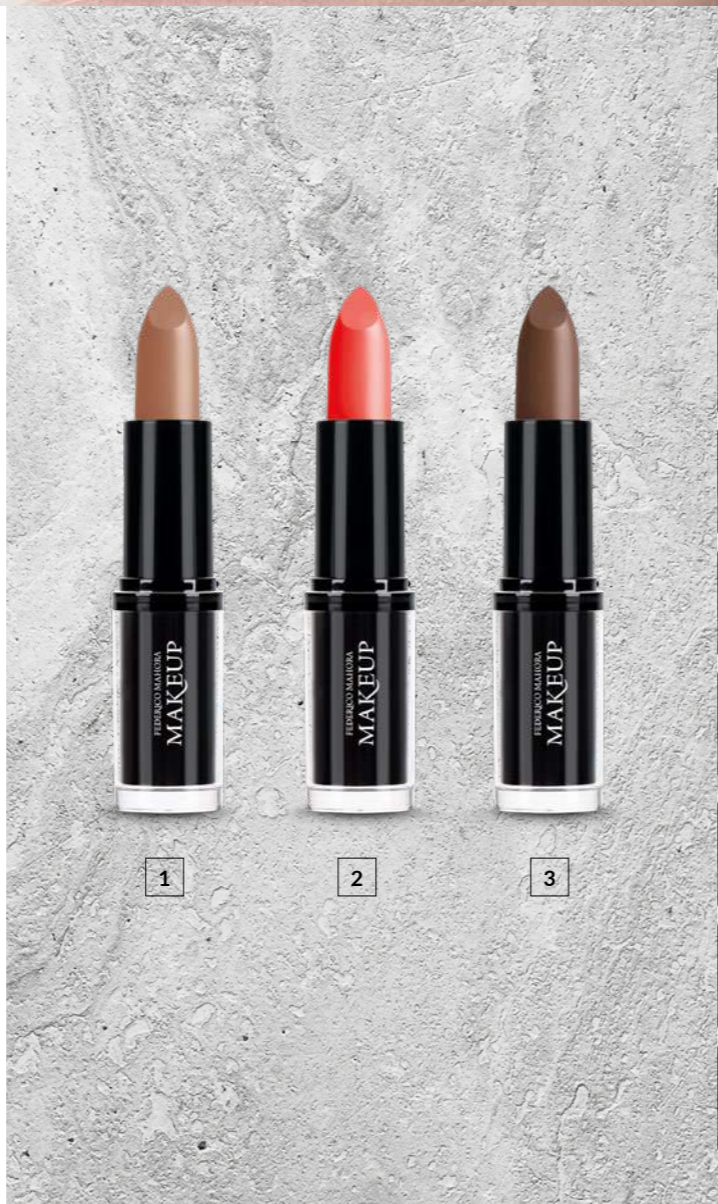
- guarantees silky smooth matte finish and intense colour that stays on your lips for long
- contains precious chia seed oil
- non-sticky formula and creamy texture offering you a long-lasting feeling of comfort – you won't even feel you are wearing it

4.2 g

1 SHADOW
604045 |

2 CARAVAN
604043 |

3 SANDSTORM
604042 |



- 4 CLASSIC RED
604232 |
- 5 PASSIONATE RED
604226 |
- 6 SWEET CORAL
604228 |
- 7 CARMINE BLISS
604230 |
- 8 BURGUNDY WINE
604233 |
- 9 PLUM CHOCOLATE
604227 |
- 10 PASSIONATE FIRE
604229 |
- 11 AMAZING NUDE
604231 |

- 12 SPLENDID MAGENTA
604234 |
- 13 VIBRANT FUCHSIA
604224 |
- 14 SMOKED LYCHEE
604225 |
- 15 BLAZING CORAL
604220 |
- 16 CUTE PINK
604223 |
- 17 RAVISHING ROSE
604222 |
- 18 CLASSIC NUDE
604221 |



LIPS

Long-Lasting Matte LIQUID LIPSTICK

LONG-LASTING MATTE LIQUID LIPSTICK

A perfect matte effect that will stay on your lips for multiple hours. The ultra-light formula not only guarantees a perfect, intensive matte finish but also does not overburden the lips, ensuring an exceptional sense of comfort. Thanks to such precious, natural ingredients as beeswax and avocado oil, the lipstick will not make your lips dry. The easy application and long-lasting colour without the sticking, drying and smearing effect will make you fall in love with it from the first use.

- **no more frequent corrections of your makeup - the lipstick will stay on your lips for up to 6 hours**
- **its exceptional composition ensures intense, matte colour, which not only does not make your lips dry but also gives them the feeling of hydration**
- **thanks to a precise applicator and silky texture with a pleasant scent, applying colour to your lips will become a real pleasure**

6 ml



HOT RED
604014 |



TAFFY
604011 |



CERISE
604012 |



CREAMY
604016 |



VIOLET
604015 |



PEACH
604048.01 |



PINK POWDER
604047.01 |



CRIMSON
604010 |



ROSE
604017 |



MAUVE
604009 |



BLUSH
604013 |



CLARET
604018 |



VICTORIAN ROUGE
604046.01 |

LONG-LASTING MATTE LIQUID LIPSTICK GIVES YOUR LIPS LONG-LASTING VELVETY MATTE FINISH EFFECT.



2 Phase MAKEUP REMOVER

2 PHASE MAKEUP REMOVER

Gentle yet highly effective at removing eye and lip makeup, also waterproof formulas.

- leaves the skin moisturised, soft and smooth
- hypoallergenic

150 ml | 609001 |



MICELLAR LOTION

MICELLAR LOTION

Removes makeup and cleanses the skin, perfectly preparing it for further skincare routine.

- based on rose water from damask rose's petals
- perfectly refreshes the skin

150 ml | 609002 |



Makeup Remover TOWEL

MAKEUP REMOVER TOWEL

Thoroughly removes even waterproof makeup without the use of cosmetic products.

- just dampen it with water
- suitable for all skin types, including sensitive skin

608107 |



Latex-Free MAKEUP SPONGE

LATEX-FREE MAKEUP SPONGE

Helps to apply the perfect face makeup. Ideal for foundation and concealer application.

- latex-free
- a unique, precise shape

608104 |



Nail Lacquer GEL FINISH

NAIL LACQUER GEL FINISH

Perfectly finished, shiny nails after the first application. The gel formula of the varnish ensures not only ultra-fast drying, excellent coverage, but also no chipping and durability for a really long time. Vivid, intense colors will be perfect for any occasion.

- provides a saturated, long-lasting colour and excellent coverage from the first application
- resistant to chipping, abrasion and dulling
- with a wide nail polish brush

11 ml



NEW COLOURS



FRESH LIME
603160.01 |



POLAR NIGHT
603169.01 |



BRILLIANT RAY
603153.01 |



AMAZING RED
603163.01 |



STRONG PINK
603161.01 |



BLINDING NEON
603165.01 |



BLOOMING ROSE
603154.01 |



DEEP MAROON
603168.01 |



BLUE LAKE
603162.01 |



NEON SUNSET
603158.01 |



DOLLS HOUSE
603166.01 |



NEON CRANBERRY
603167.01 |



JUICY PLUM
603156.01 |



BLACK DOVE
603155.01 |



Nail **CONDITIONER** with Keratin

NAIL CONDITIONER WITH KERATIN

Designed for splitting nails.

- keratin regenerates and hardens the nail plate protecting it against damage

10 ml | 603006 |



Nail Top Coat **HYBRID LOOK**

NAIL TOP COAT HYBRID LOOK

Gives your painted nails a hybrid manicure look and an amazing shine without the use of UV light. The unique formula provides effective protection against chipping and wearing down of the nail polish.

- does not require the use of UV lamp
- emphasises the intensity of the colour
- extends the durability of the manicure to up to 7 days
- can be removed with any nail polish remover

11 ml | 603152 |





aurile

Savour the taste...

of AURILE coffees and teas, which were created with exceptional passion and professionalism. We highly recommend our functional coffees. They have been developed by scientists and not only taste delicious, but also contain ingredients valuable for your health: vitamins and minerals. Aurile teas have been enriched with flower petals and natural aromas, so that you can enjoy their great taste every day.

CREME Instant Coffee

CREME
INSTANT COFFEE

The harmonious composition of high-quality coffees with a mild taste and delightfully rich aroma captivates all senses from the very first sip. A cup full of finesse enchants with expressive notes, making each moment unique.

- delicate and perfectly balanced
- creates velvety foam on the surface
- perfect for afternoon meetings with friends

80 g | 802001 |



INTENSE Instant Coffee

INTENSE INSTANT COFFEE

It is a composition of perfectly selected coffees creating an intriguing combination of clarity and richness of aroma. It stimulates action, while providing intense sensations. It's a cup full of black, energising essence.

- due to the freeze-drying process it impresses with strong, multi-layered taste
- for connoisseurs of deep coffee accents
- for a great start to your day

100 g | 802002 |



INSTANT

A feast for the palate and the senses. Enjoy a moment of pleasure with aromatic coffee anywhere and anytime.

EXCELLENCE GROUND

Coffee / Coffee Beans

EXCELLENCE GROUND COFFEE / COFFEE BEANS

100% Arabica

Mocha is one of the noblest coffee varieties. It has a deep, mellow taste.

- an original blend of the best African Arabica beans
- origin: Sidamo region, Ethiopia

250 g | GROUND COFFEE
802003 |

1 kg | COFFEE BEANS
802004 |



NATURAL

We chose the noble Arabica and its blends for our natural coffees, to let you enjoy its great taste in all forms.

CLASSIC Coffee Capsules

CLASSIC COFFEE CAPSULES

100% Arabica, fine grind, for espresso

Machine Colombian strains of Arabica enclosed in our capsules create a silky brew with gentle acidic overtones.

- in convenient capsules, compatible with the Nespresso®* system
- origin: Colombia

10 x 5,5 g | 802005 |

PURE GREEN Coffee

CLASSIC COFFEE CAPSULES

100% Arabica, coarse grind, unroasted, pyramid-shaped bags

Delicate flavour with distinct notes of wine. It contains a large amount of the chlorogenic acid (CGA) and caffeine which has stimulating properties.

- recommended for those who appreciate delicate flavours and want to stay in shape
- from ecological farms
- origin: Peru

20 x 7 g | 802006 |



*Nespresso® is a registered trademark owned by Société Des Produits Nestlé SA. FM WORLD and AURILE are not affiliated contractually, financially or organisationally with Nespresso® Nestlé or Nespresso® SA. FM WORLD sp. z o.o. is neither the licensee nor the distributor of the Nespresso® brand.





HAZELNUT

Ground Coffee

HAZELNUT GROUND COFFEE

Velvety note of hazelnuts in perfect harmony with the taste of stimulating coffee is the recipe for an excellent morning and unforgettable afternoon.

- **origin: East Asia**

250 g | 804002 |



CHOCOLATE

Ground Coffee

CHOCOLATE GROUND COFFEE

Classic, sophisticated chocolate aroma in the unforgettable duet with top quality Arabica and Robusta will guarantee a moment of relaxation and wonderful taste.

- **origin: East Asia**

250 g | 804003 |



IRISH CREAM

Ground Coffee

IRISH CREAM
GROUND COFFEE

Exquisite whisky and soft sweet cream enrich the aroma of natural, freshly ground coffee making it even more sophisticated. You will dream that this pleasure never ends.

- **origin: East Asia**

250 g | 804005 |



CHERRY

Ground Coffee

CHERRY
GROUND COFFEE

Strong coffee complemented with the aroma and sweetness of ripe, juicy cherries. Every sip will take you to a sun-drenched orchard.

- **origin: East Asia**

250 g | 804001 |



VANILLA

Ground Coffee

VANILLA
GROUND COFFEE

The exotic sweet aroma of vanilla introduces warm and joyful notes to complement the taste of natural coffee. A true feast for the senses.

- **origin: East Asia**

250 g | 804004 |

FLAVOURED

Chocolate or cherry? The delicious taste of hazelnuts or sweet vanilla flavour? Have fun and experiment with our flavoured coffees which taste excellent served both hot and cold.



FOCUS Ground Coffee

FOCUS GROUND COFFEE

with Guarana extract and magnesium

Aromatic coffee enriched with ingredients which contribute to the elimination of tiredness and fatigue will help you clear your mind as well as focus on what is important.

- **double power: with an additional portion of Guarana caffeine**
- **indispensable for people working intellectually and students who want to improve their memory and ability to focus**
- **RDA* in 2 cups of coffee: 30% magnesium, vitamin B2, 24% pantothenic acid, niacin, biotin**
- **origin: East Asia**

250 g | 803003 |



METABOLISM Ground Coffee

METABOLISM GROUND COFFEE

with Garcinia Cambogia and L-carnitine

Aromatic, delicious coffee which perfectly complements the slimming and detoxification process. When combined with a balanced diet and a bit of physical activity it will make you look and feel lighter.

- **recommended for those who wish to stay in shape, fight excess weight or obesity, or improve metabolism**
- **RDA* in 2 cups of coffee: 38% chromium, 30% zinc, vitamin B2, 24% pantothenic acid, niacin, biotin**
- **origin: East Asia**

250 g | 803001 |

ENERGY Ground Coffee

ENERGY GROUND COFFEE

with Guarana extract and taurine

Stimulating taurine and B group vitamin complex, in combination with the distinctive taste, boost your psychophysical efficiency. The increased dose of invigorating guarana caffeine refreshes and provides energy for the whole day.

- **excellent for very active persons, night shift workers, athletes, frequent travellers**
- **RDA* in 2 cups of coffee: 30% vitamin B2, 24% pantothenic acid, niacin, biotin**
- **origin: East Asia**

250 g | 803002 |

FUNCTIONAL

Lack of energy, unhealthy diet, stress? Start fighting them today. Our functional coffees will be of help, as they have been developed in consultation with scientists and proper nutrition specialists.

*RDA - Recommended Daily Allowance. Research assumptions: 10 g coffee / 150 ml of beverage..



HAPPINESS

Blue Tea

HAPPINESS BLUE TEA

Oolong loose leaf tea with blackcurrant, natural vanilla and peach flavour

Exquisite deep taste and mysterious, slightly emerald green colour of Oolong tea are born in the process of half-fermentation of leaves. Aromatic brew, seducing with blackcurrant notes, contains polyphenols that are beneficial to your health.

- **unique tea, called Black Dragon**
- **with whole blackcurrants**
- **origin: Chinese Fujian province**

75 g | 805001 |



JOY

Red Tea

JOY RED TEA

Pu-erh loose leaf tea with dried cherries, chokeberries rose petals and a natural cherry flavour

Aromatic red tea enriched with dried cherries and chokeberries, and delicate rose petals. It contains, among others, natural digestible selenium, vitamin E, and valuable flavonoids.

- **rich aroma with a subtle cherry note**
- **origin: Chinese Yunnan province**

75 g | 805002 |



NOBLE

Black Earl Grey Tea

NOBLE BLACK EARL GREY TEA

Ceylon loose leaf tea with natural bergamot oil, cornflower petals, orange zest and lemon myrtle

The combination of Ceylon black tea with natural bergamot oil from Italy, orange zest, cornflower petals, and lemon myrtle forms the unique variation on the classic Earl Grey tea.

- **distinct character, valued by Earl Grey enthusiasts**
- **origin: Sri Lanka**

75 g | 805003 |



EUPHORIA

Green Tea

EUPHORIA GREEN TEA

Gunpowder loose leaf tea with verbena, lemongrass, sunflower petals, lemon zest and a natural lemon flavour

The combination of Gunpowder green tea youngest leaves, aromatic verbena, lemongrass, lemon zest and sunflower petals is the key to this energising composition.

- **combines a sweet taste and a rich lemon aroma**
- **origin: Chinese Zhejiang province**

75 g | 805004 |



SERENITY

White Tea

SERENITY WHITE TEA

Pai Mu Tan loose leaf tea with rose petals

Noble white tea with rose petals and a mild floral aroma delights with its velvety, slightly sweet taste. This exceptionally subtle, harmonious composition is rich in vitamins A and E as well as beneficial polyphenols.

- **created with very young tea leaves, exceptionally delicate**
- **origin: Chinese Fujian province**

30 g | 805005 |



HARMONY

Black Tea

HARMONY BLACK TEA

Yunnan loose leaf tea with hibiscus, jasmine flowers, marigold petals, dried cranberries and a natural peach flavour

Exquisite black Yunnan tea ennobled with jasmine flowers and other unique additives, known for its distinct refreshing taste, and delightful delicate peach aroma.

- **with a harmonious taste loved by people all over the world**
- **origin: Chinese Yunnan province**

75 g | 805006 |

SWEETS

DARK CHOCOLATE

74%

DARK CHOCOLATE 74%

High cocoa content ensures intense sensations. The aromas, which are contrasted with a subtle aftertaste of sweetness, caress the taste buds.

100 g | 806009 |



DARK CHOCOLATE

99%

DARK CHOCOLATE 99%

The expressive aroma of cocoa in its purest form constitutes a feast for the connoisseurs of sublime experiences. Nothing will distract from the savoury and deep taste.

100 g | 806010 |



RECOMMENDED FOR
FIT6

RECOMMENDED FOR
FIT6

**NOW, LET YOURSELF
BE ENVELOPED BY
THE DIVINE TASTE
OF COCOA**

Aurile chocolates 74% and 99% cocoa, sweetened with stevia and no added sugar. Fewer calories, all the flavor. Ideal for people who are watching their weight, so it can be used in the Fit6 Program.

Losing weight and getting pleasure from eating has never been so tasty!

**NEW
CALORIES-FREE
SWEETNESS**

Delicious, addictive, pleasurable, irresistible...
That's how it presents itself!

Stevia is an exceptional plant – the extract obtained from its leaves is around 300 times sweeter than edible sugar. Its glycemic index is zero and does not provide calories, which makes it an ideal food supplement for people who take care of their health and an elegant silhouette.

We used its incredible properties so that they could enjoy the taste of our chocolates without remorse.



MILK CHOCOLATE

40%

MILK CHOCOLATE 40%

A combination of milk and noble cocoa that melts in your mouth. This chocolate is a perfect alternative for the enthusiasts of classic sweets.

100 g | 806007 |

DARK CHOCOLATE

54%

DARK CHOCOLATE 54%

This chocolate balances between sweet and savoury aromas. It is a perfect combination of a bitter taste with a hint of milky delight.

100 g | 806008 |

ALMONDS

in dark
chocolate

ALMONDS IN DARK
CHOCOLATE

This perfect combination of subtle sweetness of a nut with the intensity of dark chocolate intrigues and stimulates the senses.

100 g | 806011 |

ALMONDS

in milk
chocolate

ALMONDS IN MILK
CHOCOLATE

The crispy interior wrapped in a velvety melt-in-your-mouth chocolate caresses the palate from the first bite.

100 g | 806012 |

ALMONDS

in white
chocolate

ALMONDS IN WHITE
CHOCOLATE

This tempting combination of nuts and an irresistible heavenly coating is the perfect proposition for the enthusiasts of sweet treats.

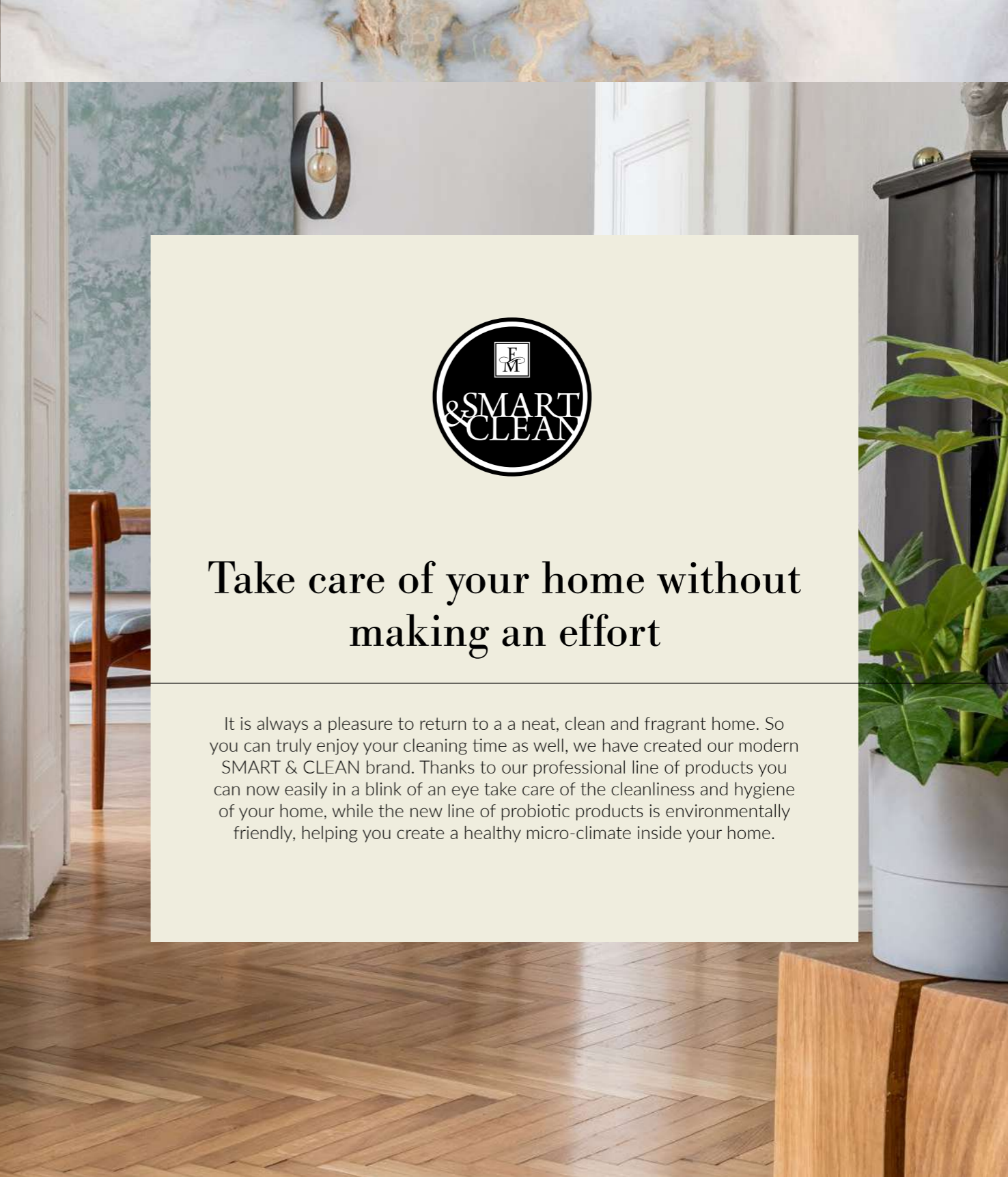
100 g | 806013 |

SWEETNESS
WITHOUT
CALORIES



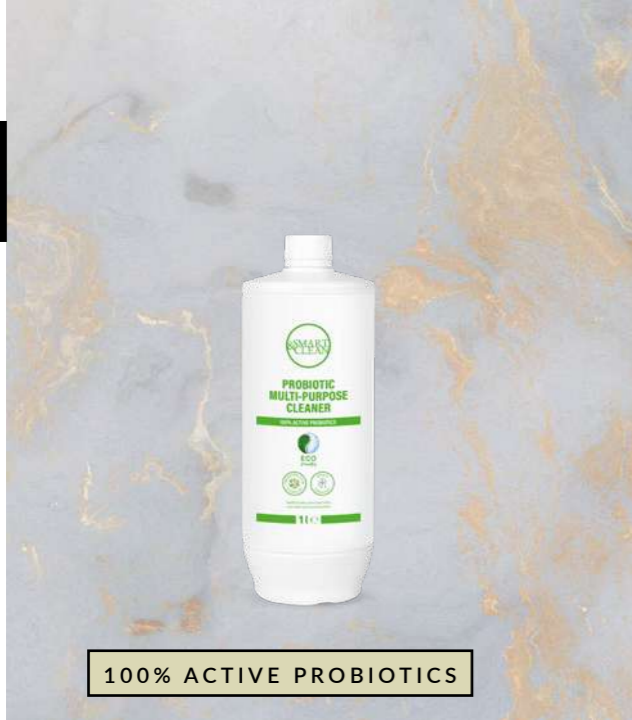
Stevia is a unique plant – the extract obtained from its leaves is about 300 times sweeter than food sugar. It has a zero glycemic index and does not provide calories, which makes it an ideal food supplement for people who care about health and a slim figure. We used its amazing properties so that you could enjoy the taste of our chocolates without remorse.





Take care of your home without making an effort

It is always a pleasure to return to a neat, clean and fragrant home. So you can truly enjoy your cleaning time as well, we have created our modern SMART & CLEAN brand. Thanks to our professional line of products you can now easily in a blink of an eye take care of the cleanliness and hygiene of your home, while the new line of probiotic products is environmentally friendly, helping you create a healthy micro-climate inside your home.



100% ACTIVE PROBIOTICS



CLEANLINESS AT THE MICROSCOPIC LEVEL



LONG-TERM ELIMINATION OF PATHOGENS AND BACTERIA



THEY CREATE A HEALTH-FRIENDLY MICRO-CLIMATE

Probiotic Multi-Purpose **CLEANER**

PROBIOTIC MULTI-PURPOSE CLEANER

Ensures effective and long-term elimination of all dirt and unpleasant odours from all types of washable surfaces, among others: ceramic glaze, floors, kitchen tabletops, walls and sanitary fittings.

1000 ml | **713005** |



Probiotic Floor **CLEANER**

PROBIOTIC FLOOR CLEANER

Removes contaminants and bad bacteria cultures from the cleaned surfaces, as well as eliminates unpleasant odours for a long time.

1000 ml | **713001** |

Probiotic Washing-Up **LIQUID**

PROBIOTIC WASHING-UP LIQUID

Perfectly degreases the dishes. Moreover, it keeps the hydraulic components clean and it is gentle on the skin.

750 ml | **713003** |

Probiotic Hand **GEL**

PROBIOTIC HAND GEL

Cleans hands thoroughly without the use of water, as well as moisturises them perfectly. It restores the appropriate microflora of the skin.

500 ml | **713004** |

Probiotic Laundry **LIQUID**

PROBIOTIC LAUNDRY LIQUID

Due to the concentrated formula, it is sufficient for 50 washes. It perfectly cleans white and coloured clothes, providing them with a beautiful scent. Moreover, it protects the washing machine against dirt deposits.

1500 ml | **713002** |



Find our special symbol and look for it on other products – each one is environmentally friendly!

Ecological cleaning products will take care not only of your home, but also your skin, health and the environment. Discover the beneficial power of probiotic preparations.

LET THE GOOD BACTERIA FEEL AT HOME

The positive impact of probiotics on the human body has been known for years. Their beneficial properties fit perfectly into the constantly developing eco-trend. We have used them to create an exceptional line of household products, in order to enable the removal of dangerous pathogens from the surfaces. The interior of your home will not only be perfectly clean, but it will be also populated with beneficial strains of bacteria.

EFFECTIVE FOAM

Washing-Up Liquid

EFFECTIVE FOAM WASHING-UP LIQUID

The innovative formula easily removes all dirt and even the most stubborn grease from the dishes. It foams perfectly, making it extremely efficient.

- creates a dense, active foam that effectively washes dishes, leaving them perfectly clean and shiny
- turns the washing-up routine into a real pleasure
- very efficient – it lasts for a long time

750 ml

250 ml



1

1 AVOCADO & BERRIES
705014 |

A subtle combination of avocado and forest fruit aromas. Enriched with avocado extract and panthenol.

2 RASPBERRY
750 ml | 705015 |
250 ml | 705015.02 |

Sweet and tempting raspberry fragrance. Contains raspberry extract and allantoin.

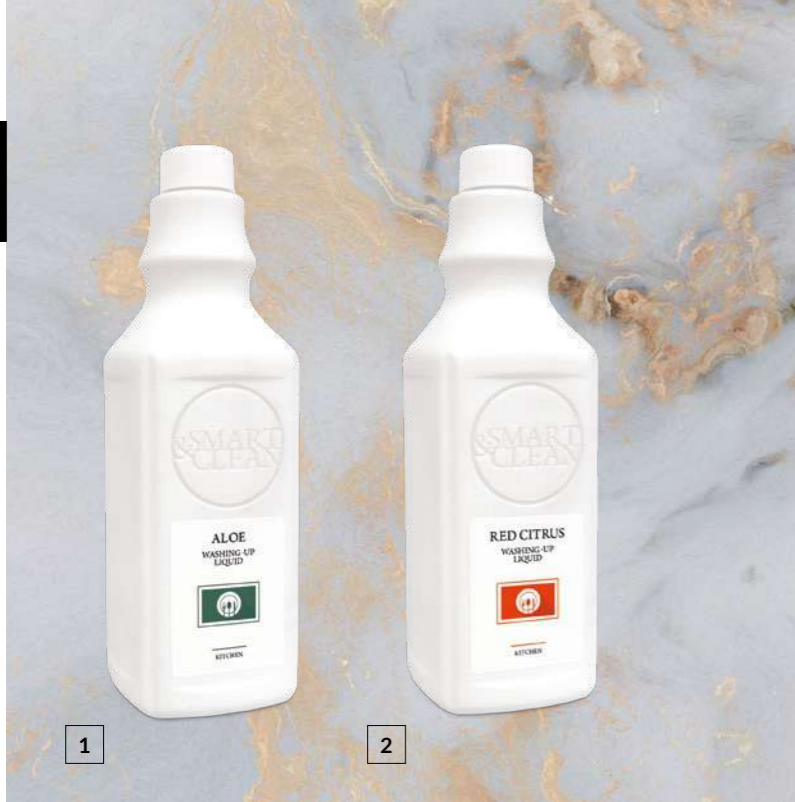


2



SPOTLESS AND HYGIENICALLY CLEAN

Our cleaning products that are designed for the kitchen are the embodiment of passion and commitment that we have towards our work. We know they are reliable as we use them ourselves. We want your kitchen to be a place that is spotless and hygienically clean.



1

2

Washing-Up LIQUID

WASHING-UP LIQUID

Can easily deal with grease and other dirt. Enriched with vitamins and plant extracts that moisturise and nourish the skin of your hands.

- gentle on the hands - pH 5.5

750 ml



Washing-Up BALM

WASHING-UP BALM

Effectively removes grease and other dirt. It contains glycerin, allantoin and babassu oil obtained from Brazilian palm nuts, which leaves a pleasant feeling of hydration on the hands.

- clean dishes, beautiful hands

750 ml | 705006 |



DEGREASER Extra Power

DEGREASER EXTRA POWER

Undeclared in the fight against grease – removes even sticky residues and burnt grease. Especially recommended for: countertops, sinks, fryers, hoods and hobs, ovens, grills, and pots.

- cleans without streaks and scratches

750 ml | 705009 |



Kitchen CLEANER

KITCHEN CLEANER

Indispensable in every kitchen. With active foam, the cleaner removes dirt and dust. It ensures perfect cleanliness without streaks and water stains. Additionally, it gently polishes and makes the cleaned surfaces look well-kept.

- excellent for everyday use

750 ml | 705003 |



Fridge & Microwave CLEANER

FRIDGE & MICROWAVE CLEANER

A guarantee of hygienic cleanliness. The cleaner removes dirt, including greasy stains, while supporting defrosting. With a convenient trigger cap that reaches areas which are hard to reach.

- leaves a fresh citrus scent
- for everyday use

750 ml | 705011 |

1 ALOE
705005 |

Contains aloe extract which moisturises and regenerates the skin of your hands.

2 RED CITRUS
705004 |

Recommended for dry hands – with the extract of exotic fruit.



Ceramic Hob CLEANER

CERAMIC HOB CLEANER

A modern formula thoroughly cleans and cares. Active foam is easy to spread, leaves no streaks or scratches.

- prevents sticking of new dirt
- gentle to the cleaned surfaces

750 ml | 705010 |



DESCALER All Purpose

DESCALER ALL PURPOSE

Forget limescale. The Descaler All Purpose instantly removes limescale even from areas which are difficult to reach. If used regularly it extends the life of appliances. Recommended for: kettles, heaters, sieves, irons, coffee machines and other household appliances.

- concentrated acidic formula
- effective and efficient

250 ml | 705013 |



Inox CLEANER

INOX CLEANER

Designed to care for matt stainless steel elements and surfaces. Removes greasy stains and fingerprints. Cleans, polishes and protects against new dirt.

- does not scratch or leave streaks

250 ml | 705012 |



Storage BOX

STORAGE BOX

Dishwasher tablets, laundry capsules – this handy box will fit them all. Protect capsules against moisture. The four-snap lid additionally protects the box contents from children.

Dimensions: 19,5 x 14 x 10 cm
710001 |



3 in 1 Dishwasher TABS

3 IN 1 DISHWASHER TABS

Multifunctional: the tabs thoroughly wash the dishes and make them shine, as well as protect the dishwasher. They remove even burnt remains of food and the most difficult stains of coffee, tea, and spots of grease or eggs.

- protect cutlery against corrosion, and glass against looking cloudy
- sold in sets of 10 pieces – buy as many tabs as you actually need

180 g / 10 pcs | 981002 |

Liquid SOAP

LIQUID SOAP

Give your skin perfect purity and hydration. The carefully selected ingredients of soap wash thoroughly and gently nourish the hands, leaving a subtle scent.

500 ml



1 MANGO & PEACH
701005 |

The sweet aroma of appetising mango and peach is a daily moment of relaxation.

2 CITRUS & CONIFERS
701006 |

The sophisticated combination of conifer notes with refreshing accords of citrus, lemongrass, and a light touch of rosewood.

3 HYPOALLERGENIC
701004 |

It effectively cleans and nourishes the sensitive skin of hands, removes even oily dirt. It does not contain scented allergens and colouring.

Bathroom CLEANER

BATHROOM CLEANER

Actively removes scale and soap. It contains innovative ingredients that prevent the formation of water spots.

- leaves a clean shine and cares for the surface
- with a pleasant floral-fruity aroma

750 ml | 709001 |

Shower CLEANER

SHOWER CLEANER

Clean and shiny shower. With the content of nanoparticles of silicon the cleaner creates a protective film that limits the re-deposition of dirt, sediment and water vapour.

- the unique formula works effectively even in cold water
- safe for allergy sufferers

750 ml | 709002 |

Bathroom Cleaning WIPES

BATHROOM CLEANING WIPES

Easily remove all kinds of water spots and deposits from the bathtub, washbasin, shower cabin, tiles or toilet.

- due to the antibacterial properties, they ensure hygienic cleanliness
- they give the surfaces a pleasant and fresh scent

60 pcs | 706005 |



Toilet Bowl CLEANER

TOILET BOWL CLEANER

Choose hygienic cleanliness. The cleaner effectively removes all kinds of dirt and limescale. Designed for cleaning toilet bowls, ceramic and metal sinks, bathtubs, shower trays, ceramic tiles, terracotta and metal fittings.

- thick gel texture thoroughly coats the cleaned surfaces
- does not scratch the surface and is easy to rinse
- leaves a pleasant scent

750 ml | 705010 |

1 BLOOMING POWER
707003 |

The captivating scent of spring flowers.

2 EXOTIC FRUITS
707002 |

The joyful scent of exotic fruits.

THE REALM OF RELAXATION

Turn your bathroom into a realm of relaxation. Create a set of your favourite cosmetics, light the candles, forget about everyday worries. SMART & CLEAN products will take care of everything else for you.



Limescale & Rust Remover **GEL**

LIMESCALE & RUST REMOVER GEL

Easily removes deposits of limescale, rust, soap and other dirt. If used regularly the Gel counteracts the formation of new dirt.

- gently polishes
- clean and scratch-free fittings

750 ml | 706003 |



Multi-Surface Soft **CLEANER**

MULTI-SURFACE SOFT CLEANER

A scrub-free pleasure of cleaning. Velvet soft, yet effective. It removes even the most stubborn dirt and grease.

- with cleaning dolomite
- does not scratch or discolour the cleaned surface

750 ml | 706002 |



Grout **CLEANER**

GROUT CLEANER

Clean grout expert. Actively protects against dirt and moisture. It does not dissolve or discolour the grout.

- for white and coloured grout
- for any dirt

750 ml | 706004 |



Drain Clear **GRANULES**

DRAIN CLEAR GRANULES

Reach for them to forget your plumber's number. They dissolve grease, hair and kitchen waste. Designed for unclogging sewer pipes, drains and traps in sinks, bathtubs and shower trays.

- essential in every kitchen and bathroom
- use at least once a month

500 g | 706001 |

CLEANING PRODUCTS FOR SPECIAL TASKS

They will reach every nook and get rid of all unwelcome guests. Nothing will stop them. Leave your kitchen and bathroom to our cleaning products for special tasks.



Multi-Fabric STAIN REMOVER

MULTI-FABRIC
STAIN REMOVER

Tough on stains, gentle on your clothes. Thanks to active enzymes, it removes even grass stains, blood, eggs and greasy sauces. Safe for colours and delicate fabric.

- effective even at low temperatures
- contains no chlorine
- with a fresh fruity scent

750 ml | 704004 |



**WE TAKE CARE
OF YOUR CLOTHES**

With passion and enthusiasm, we create products that take care of your clothes. Our specialists make sure that these products are not only effective but also pleasant to use.



Snow White Laundry CAPSULES

SNOW WHITE
LAUNDRY CAPSULES

Extract and protect the natural whiteness of fabric, preventing it from greying. Designed for white clothes.

256 g / 10 pcs | 704002 |



Expert Color Laundry CAPSULES

EXPERT COLOR
LAUNDRY CAPSULES

Perfectly protect colours with a concentrated wash power.

256 g / 10 pcs | 704001 |



Sensitive Touch Laundry CAPSULES

SENSITIVE TOUCH
LAUNDRY CAPSULES

With the content of natural soap the Capsules combine maximum washing efficiency with a mild formula. Do not contain allergens, artificial colourings or optical brighteners.

256 g / 10 pcs | 704003 |

**STORE IN A CONVENIENT STORAGE BOX.
SEE PAGE 165 FOR DETAILS.**

Vivid Colours LAUNDRY LIQUID

VIVID COLOURS
LAUNDRY LIQUID

Perfectly protects colours and successfully removes dirt. It works even at low temperatures, prevents shrinking and stretching of the fabric.

- excellent for every colour
- with the scent of Pure Parfum 81

1000 ml | 704005 |



White LAUNDRY LIQUID

WHITE LAUNDRY LIQUID

The unique formula restores dazzling whiteness to fabrics. Recommended for washing even delicate clothes. A subtle aroma of wild orchid.

- revives white colour and prevents it from greying

1000 ml | 704006 |

Black LAUNDRY LIQUID

BLACK LAUNDRY LIQUID

Perfectly washes dark clothes and allows you to keep the intensity of black for longer. With active enzymes to effectively fight stains regardless of water temperature.

- protects black fabric from fading

1000 ml | 704007 |

AROMATHERAPY Fabric Softener

AROMATHERAPY FABRIC SOFTENER

With highly effective active microcapsules, which gradually release the fragrance and prevent static cling. The Softener leaves your clothes enjoyably soft and lastingly fragrant.

1000 ml |



1

2

1 SWEET DELIGHT
704012 |

Captivating composition combining the aroma of sweet vanilla and sophisticated white lily with the scent of patchouli, almonds and sandalwood.

2 AZURE SKY
704013 |

A perfect combination of citrus, fresh fruit, and green and water notes, followed by a base of musk and ambergris.



1

2

3

LUXURY Fabric Softener

LUXURY FABRIC SOFTENER

Highly concentrated liquids soften fabrics, have an anti-static effect and stimulate the senses. Enjoy the fabulous fluffiness and sophisticated fragrances by Federico Mahora.

1000 ml |

1 SUNNY BREEZE PURE 23
704011 |

Sensual and slightly sweet composition of citrus and jasmine.

2 ALLURING FRESHNESS PURE 18
704018 |

A charming combination of chypre notes with fruity-floral accords.

3 ORIENTAL MAGIC PURE 20
704019 |

A seductive combination of flowers, musk and patchouli.



Anti-Mist Glass CLEANER

ANTI-MIST GLASS CLEANER

Perfectly clean windows and mirrors for an unbelievably long time. Thanks to silicon nanoparticles, it creates a layer that facilitates cleaning and reduces the formation of impurities.

- prevents the formation of mist, dirt and dust
- perfectly degreases and leaves no streaks

750 ml | 702013 |



Glass CLEANER

GLASS CLEANER

A sure way to get gleaming windows in minutes. With silicone nano-particles, it protects against new dirt. Silicone content reduces water vapour deposition.

- effective and efficient
- with the scent of green apples

750 ml | 702005 |



Glass Cleaning WIPES

GLASS CLEANING WIPES

Ensure the perfect cleaning of glass surfaces, while leaving no streaks or water spots. This product also provides a pleasant citrus scent.

- ideal for windows, mirrors and glasses
- with the addition of alcohol

60 pcs | 702001 |



Multi-Purpose Cleaning WIPES

MULTI-PURPOSE CLEANING WIPES

The unique formula with fruit vinegar enables them to effectively remove dirt, as well as grease from various types of surfaces, providing a long-lasting and fresh scent.

- perfect for plastic, glass, metal and wood
- do not leave streaks

60 pcs | 702002 |



Multi-Purpose CLEANER

MULTI-PURPOSE CLEANER

The best of the best, for small and big cleanups. Cleaner, degreaser and care product for all types of washable surfaces, including floors, walls, countertops, tiles, sanitary fittings.

- leaves a pleasant aroma of pomegranate flowers

1000 ml | 702004 |



CRT & LCD Screen CLEANER

CRT & LCD SCREEN CLEANER

Carefully removes fingerprints, dust, grease stains and dirt. Limits re-settling of dust by creating an antistatic coating. Recommended for: computer screens, mobile phones screens, plasma screens, LED and LCD screens, displays, remote controls, keyboards.

- leaves a streak-free shine
- invaluable in the home and office

250 ml | 702011 |

FROM THE ROOF
TO CELLAR

From the roof to cellar, inside and outside - anytime and anywhere you can count on the professional help of our products. This is a real Champions League among cleaning products.



Fireplace Glass & Oven **CLEANER**

FIREPLACE GLASS & OVEN CLEANER

A special formulation that removes burn and smoke stains, even burnt grease. Excellent for cleaning barbecues and household utensils.

- with ingredients that limit the redeposition of dirt
- safe for the cleaned surfaces
- does not leave streaks

750 ml | 702009 |



Power **CLEANER**

POWER CLEANER

One Cleaner – various surfaces. Thanks to its special formula it cleans laminates, tiles, floor tiles, linoleum, floor tiles, terrazzo, as well as fencing and car dashboards. Perfectly removes oils and greases.

- indispensable in the home, garage and garden

1000 ml | 702010 |



Carpet & Upholstery **CLEANER**

CARPET & UPHOLSTERY CLEANER

The active foam formula perfectly removes stains, softens the fabric and prevents static cling. Gentle on your hands and fabric colours.

- designed for handwashing
- with a citrus scent

1000 ml | 702007 |



Laminate Floor **LIQUID**

LAMINATE FLOOR LIQUID

Perfectly clean laminate panels, free of dust or smudges. It removes grease stains and dirt. Recommended for: laminate floor panels, wall panels and veneer furniture.

- cleans and cares for the surface
- leaves a pleasant smell of Marseille soap

1000 ml | 702006 |



Plastic Surface **CLEANER**

PLASTIC SURFACE CLEANER

Removes all impurities: greasy deposits, soot and dust. Effective and gentle: does not scratch or discolour.

- for white and colour surfaces

750 ml | 712001 |



Cleaning **SPONGE** Wet & Wipe

CLEANING SPONGE WET & WIPE

No more dirty walls – it wipes out pen, marker and crayon marks. It may be used for cleaning garden furniture, grout, tiles, floors, doors, stoves, dishes, car rims, plastic and metal. The innovative structure of the Sponge removes dirt by penetrating deeply into the cleaned surface.

- works without detergents – just moisten the sponge
- removes dirt and water stains

10,9 x 6,1 x 3,8 cm | 702008 |



Vacuum FRESHENER

VACUUM FRESHENER

It emits a beautiful scent in the vacuumed room and neutralises the unpleasant smell of dust, freshening the room for a long time. It is suitable for all types of dry-operating vacuum cleaners. Easy to use – just place it near the exhaust air filter.

2 pcs (4,7 x 7,7 cm), 7,8 g, 9,8 g

1 PURE HOME 366
708063 |

2 ALLURING FRESHNESS
708046 |

3 ORIENTAL MAGIC
708047 |



4 THRILLING ADVENTURE
708048 |

5 MALDIVES PARADISE
708031 |

6 SINGAPORE TWILIGHT
708034 |

7 GREEN SPA
708025 |

8 CHARMING ALLEY
708026 |

9 COSMIC FANTASY
708057 |

Wardrobe FRAGRANCE

WARDROBE FRAGRANCE

Steeped in an original fragrance composition, gradually releases a wonderful scent. Beautiful accords fill the space ensuring the freshness of your wardrobe.

15,2 g

1 MALDIVES PARADISE
708032 |

2 SINGAPORE TWILIGHT
708035 |



1

2

Home PERFUME

HOME PERFUME

Beautiful fragrance compositions for your home.

40 ml

1 MALDIVES PARADISE
708030 |

Light, sea accord combined with a subtle sweetness of exotic fruits bring to mind paradise holidays.

2 SINGAPORE TWILIGHT
708033 |

Orange immersed in juicy, fruity-floral notes pulsates with energy like the Lion's City.

3 GREEN SPA
708023 |

An energising combination of aloe vera and a green cucumber accord will have a positive and relaxing effect on you.

4 CHARMING ALLEY
708024 |

A subtle duo of rose and musk scents gives the room a romantic aura.



1

2

3

4

SCENT, ATMOSPHERE, EMOTIONS

Beautiful scents improve your mood; they build atmosphere and arouse emotions. Allow them to accompany you anytime, anywhere. With our refreshing products, it is possible.



Leather CONDITIONER

LEATHER CONDITIONER

Makes car upholstery, furniture, clothes and leather accessories look like new again. It provides them with shine and smoothness, improves their colour and makes them waterproof.

- contains carnauba wax, honey extract and silicone emulsion with avocado oil
- intended for grain leather and eco leather

250 ml | 702014 |



Furniture CREAM

FURNITURE CREAM

Effectively removes dust and prevents it from accumulating. Contains carnauba wax that gives cleaned surfaces shine and minimises the risk of scratches.

- with silicone emulsion that improves furniture's moisture resistance
- suitable for wooden, laminated and veneered surfaces
- leaves a pleasant scent

250 ml | 703004 |



Furniture Cleaning WIPES

FURNITURE CLEANING WIPES

Effectively remove dirt and dust, as well as provide the cleaned surfaces with a dazzling shine without streaks.

- with a special formula enriched with wax
- they ensure a long-lasting fresh and pleasant scent

60 pcs | 703001 |



THE POWER OF WAXES

Aesthetics, durability, unique atmosphere – you can maintain these features of wooden and leather objects for longer if you care for them in the right way. Our products use the power of waxes by drawing out what's best in them.



Lint-Free **CLOTH** For Smooth Surfaces

LINT-FREE CLOTH FOR SMOOTH SURFACES

It will do a great job at home as well as in workplaces that require maintaining a high level of hygiene (e.g. in the pharmaceutical, medical, electrical, automotive industries as well as in printing companies).

- **does not scratch the cleaned surface**
- **can be used with dissolvent**
- **soft and flexible material makes it easy to clean less accessible areas**

40 pcs (23 x 39 cm) | **710012** |



Ultra Absorbent Cleaning **CLOTH**

ULTRA ABSORBENT CLEANING CLOTH

Perfect for cleaning various types of surfaces in the household. Their unique structure with a system of holes facilitates the absorption of water, oily substances, detergents and paints.

- **extremely absorbent**
- **practical and economical solution – can be rinsed and reused**

34 pcs (23 x 39 cm) | **710011** |



FRAGRANCES LIST

FOR HER

FRAGRANCE FAMILY	KEY NOTE	FRAGRANCES	PHEROMONE	INTENSE	SHOWER GEL	BODY BALM	ANTIPERSPIRANT ROLL-ON	BODY SPRAY	BODY MIST	SHAVING FOAM	SOLID PERFUME STICK	PERFUMED HAND SPRAY	PERFUMED ANTIPERSPIRANT STICK
FLORAL	FRUITY	10, 17, 25, 180, 281, 322, 420, 427, 437, 438, 443, 447, 449, 486, 493, 499, 700, 708, 711, 716, 800, 806, 807, 817, 818, 827, 833, 835, 836, 841, 845, 847	10	10, 17, 25				827					
	ORIENTAL	20, 97, 132, 147, 146, 183, 239, 434, 446, 317, 352, 444, 355, 487, 489	20, 489	20, 97, 489	20	20	20		20, 489				
	WATER	7, 141, 174, 701, 707, 488											
	GREEN	1, 81	1, 81	81	81	81	81						
	ALDEHYDE	21, 826		21									
	CITRUS	298, 491, 702, 810											
	WOODY	365, 414, 445, 777, 715, 710, 713											
	CHYPRE	485, 706, 848											
	GOURMAND	842, 846											
	CITRUS	LEMON	33, 828, 712	33	33	33	33	33					
FRUITY		419											
MANDARIN		23, 801	23	23									
ORANGE		6											
FLORAL		709, 714, 844											
ORIENTAL	ORIENTAL	484											
	FLORAL	9, 101, 171, 257, 431, 436, 440, 441, 442, 717, 809, 820, 834	101, 431, 436	9, 436	171, 809	809		809			809	809	809
	FRUITY	12, 98, 237, 286, 413, 426, 492	98, 413	98, 413									
	WOODY	26, 142, 162, 359, 448											
WOODY	SPICY	24, 173, 177, 366		173	173, 366	173, 366	173	366			366	366	366
	AMBERGRIS	32											
	FLORAL	241, 313, 825											
WOODY	FRUITY	358											
	ORIENTAL	703											
	CITRUS	500, 843											
	FRUITY	5, 16, 34, 80, 362, 372, 804, 811, 829	5, 34	5, 16				362					
CHYPRE	WOODY	18	18	18	18	18	18		18	18			
	FLORAL	432, 802, 803, 819											

FOR HIM

FRAGRANCE FAMILY	KEY NOTE	FRAGRANCES	PHEROMONE	INTENSE	SHOWER GEL	BODY SPRAY	ANTIPERSPIRANT ROLL-ON	SHAVING FOAM	AFTERSHAVE	AFTERSHAVE BALM	SOLID PERFUME STICK	PERFUMED HAND SPRAY	PERFUMED ANTIPERSPIRANT STICK
CHYPRE	FRUITY	169, 498											
	WOODY	56	56	56									
	AMBERGRIS AND MUSK	110	110	110									
	WATER	704, 705											
	ORIENTAL	490											
ORIENTAL	FLORAL	52, 465, 481	52	52	52		52		52	52			
	FRUITY	478, 482, 813, 830											
	SPICY	199, 224, 466, 815, 832			199, 815	199	199		199	199	199	199	199
	AMBERGRIS	64, 823	64	64	823	823							
	WOODY	301, 326, 335, 471, 475, 812, 821, 822, 837				335							
	GOURMAND	839											
	FOUGERE	494, 496											
WOODY	CITRUS	495											
	FRUITY	55, 195, 427, 479, 824	472	472	472		472						
	PATCHOULI	160, 198, 327, 334											
	VETIVER	151, 152											
	WATER	457, 474	457	457									
	CITRUS	497, 500											
	GOURMAND	720											
FOUGERE	CHYPRE	838											
	FERN	43, 135, 332	135	43									
	LAVENDER	54, 300, 473, 480, 483, 814, 831, 849	473	473	473		473						
CITRUS	LEMON	57											
	MANDARIN	134, 452	134	134	134		134	134	134	134			
	ORANGE	93											
	ORIENTAL	721, 840											
	WOODY	718											

FRAGRANCES LIST

FOR HOME

FRAGRANCE FAMILY	KEY NOTE	FRAGRANCES	SCENTED CANDLE	WAX MELTS	HOME PERFUME	AIR FRESHENER	WARDROBE FRAGRANCE	VIVID COLOURS LAUNDRY LIQUID	IRONING LIQUID	FABRIC SOFTENER			VACUUM FRESHENER				
										Sunny Breeze	Alluring Freshness	Oriental Magic	Alluring Freshness	Oriental Magic	Thrilling Adventure	Cosmic Fantasy	Pure Home
CHYPRE	WOODY	18, 56	18	18		18	18				18	18					
	FRUITY	05 16 34, 362 372				372	372										
CITRUS	MANDARIN	134					23		23	23							
	LEMON	33	33				33										
FLORAL	FRUITY	10 708	FLAMINGO						10								
	ORIENTAL	20, 489	20, 489			20, 489	20, 489				20		20		489		
	ALDEHYDE	21															
	GREEN	81						81	81								
WOODY	FRUITY	472, 900	472, 900	472 900	900	472, 900	472, 900								472		
	ORIENTAL		SEXY CASHMERE														
	GOURMAND	910	910	910	910	910											
	CITRUS	907															
	WATER	457															
ORIENTAL	FLORAL	52, 431, 436, 809	809, MUFFIN, VIOLET OUD		809	436, 809, 913	436, 809										
	FRUITY	32, 413	32, 413, AMBRE ROYAL BUBBLE, MALACHITE		413		413										
	SPICY	199, 366	366		199, 366	366	366										366
	AMBERGRIS		AMBERGRIS				823	823									
	WOODY	335	BLACK GOLD, RUBY				335										
FOUGERE	LAVENDER	473	473			473	473										



All prices in the Catalogue include VAT. FM WORLD product Catalogue no. 35 is valid from 2 October 2021. The offer included in the Catalogue in terms of prices and products is valid from 2 October 2021 while stock lasts or until a new Catalogue is introduced. Detailed information about the products and usage methods can be found on distribution. fmworld.com. Catalogues, the Marketing Plan and other advertising, promotional, and information materials that are issued or explicitly approved by FM WORLD are the only authorised sources of information for the purpose of selling and advertising of FM WORLD. The FM WORLD branded products are genuine products by FM WORLD.

© FM World Spółka z ograniczoną odpowiedzialnością, address: ul. Żmigrodzka 247, 51-129 Wrocław, registered in the National Court Register, District Court Wrocław-Fabryczna in Wrocław, 6th Economic Department of National Court Register, under no. NCR (KRS) 0000411446, NIP: 8952010760, with a fully paid-up share capital in the amount of PLN 182 900,00, 2021.